

## Product datasheet for **TA322514**

### AIMP2 Rabbit Polyclonal Antibody

#### Product data:

Product Type:	Primary Antibodies
Applications:	IHC, WB
Recommended Dilution:	WB: 200-1000 WB positive control: Hela, HepG2, MCF-7 and HT-29 cells IHC: 10-50 Positive control: Human liver cancer Predicted cell location: Cytoplasm
Reactivity:	Human, Mouse, Rat
Host:	Rabbit
Isotype:	IgG
Clonality:	Polyclonal
Immunogen:	Fusion protein corresponding to a region derived from 11-200 of Human Aminoacyl tRNA synthase complex-interacting multifunctional protein 2
Formulation:	PBS pH7.3, 0.05% NaN <sub>3</sub> , 50% glycerol
Concentration:	lot specific
Purification:	Antigen affinity purification
Conjugation:	Unconjugated
Storage:	Store at -20°C as received.
Stability:	Stable for 12 months from date of receipt.
Predicted Protein Size:	35 kDa
Gene Name:	aminoacyl tRNA synthetase complex interacting multifunctional protein 2
Database Link:	<a href="#">NP_006294</a> <a href="#">Entrez Gene 231872 Mouse</a> <a href="#">Entrez Gene 288480 Rat</a> <a href="#">Entrez Gene 7965 Human</a> <a href="#">Q13155</a>



[View online »](#)

**Background:**

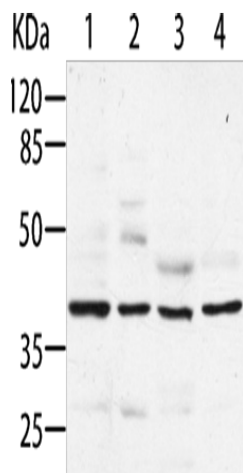
The JTV1 gene is located on chromosome 7p22 flanked by two genes, HRI and PMS2. JTV1 and HRI overlap slightly and are arranged in a tail-to-tail fashion. JTV1 and PMS2 are separated by approximately 200 base pairs and are arranged head-to-head. JTV1 is transcribed in the opposite direction compared to HRI and PMS2. The function of the JTV1 gene product is unknown.

**Synonyms:**

JTV-1; JTV1; P38; PRO0992

**Protein Families:**

Stem cell - Pluripotency

**Product images:**

Gel: 8%SDS-PAGE

Lysate: 40  $\mu$ g

Lane 1-4: HeLa cells

HepG2 cells

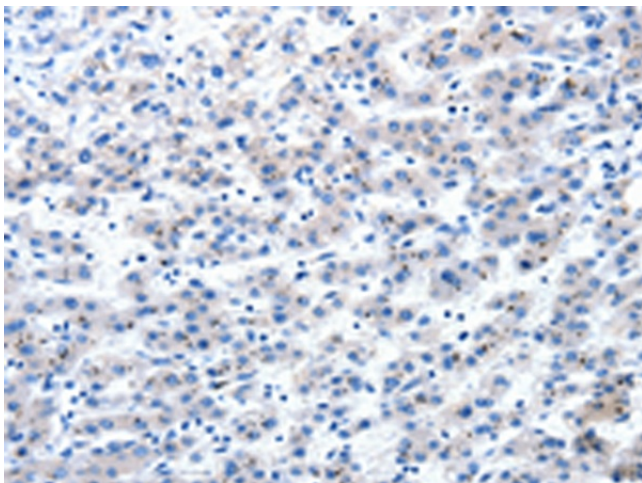
MCF7 cells

HT29 cells

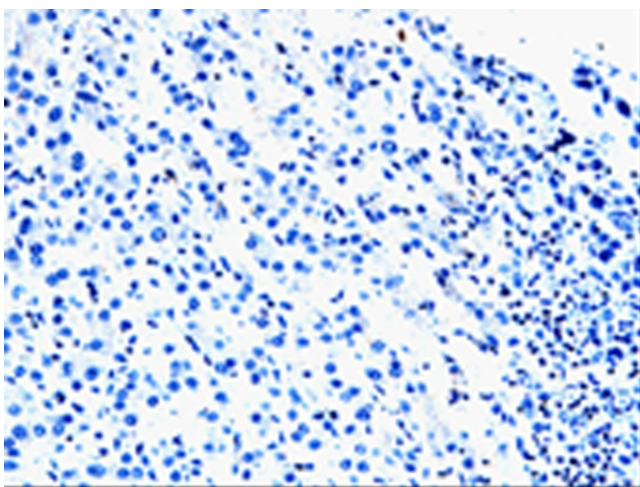
Primary antibody: TA322514 (AIMP2 Antibody) at dilution 1/200

Secondary antibody: Goat anti rabbit IgG at 1/8000 dilution

Exposure time: 1 minute



Immunohistochemistry of paraffin-embedded Human liver cancer tissue using TA322514 (AIMP2 Antibody) at dilution 1/25 (Original magnification:  $\times$ 200)



Immunohistochemistry of paraffin-embedded Human liver cancer tissue using TA322514 (AIMP2 Antibody) at dilution 1/25, treated with fusion protein. (Original magnification: ×200)