

## Product datasheet for **TA322512S**

### **NCOR (NCOR1) Rabbit Polyclonal Antibody**

#### **Product data:**

<b>Product Type:</b>	Primary Antibodies
<b>Applications:</b>	IHC
<b>Recommended Dilution:</b>	IHC: 100–300 Positive control: Human cervical cancer Predicted cell location: Cytoplasm, Nucleus
<b>Reactivity:</b>	Human
<b>Host:</b>	Rabbit
<b>Isotype:</b>	IgG
<b>Clonality:</b>	Polyclonal
<b>Immunogen:</b>	Synthetic peptide corresponding to a region derived from 840–894 amino acids of Human nuclear receptor corepressor 1
<b>Formulation:</b>	PBS pH7.3, 0.05% NaN <sub>3</sub> , 50% glycerol
<b>Purification:</b>	Antigen affinity purification
<b>Conjugation:</b>	Unconjugated
<b>Storage:</b>	Store at –20°C as received.
<b>Stability:</b>	Stable for 12 months from date of receipt.
<b>Gene Name:</b>	nuclear receptor corepressor 1
<b>Database Link:</b>	<a href="#">NP_006302</a> <a href="#">Entrez Gene 9611 Human</a> <a href="#">Q75376</a>

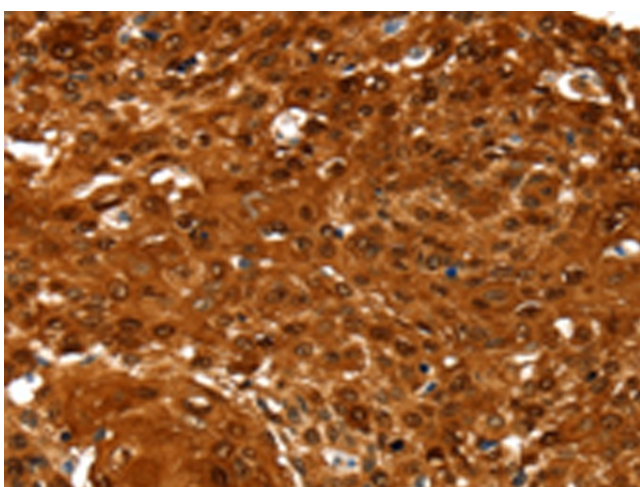


**Background:** This gene encodes a protein that mediates ligand-independent transcription repression of thyroid-hormone and retinoic-acid receptors by promoting chromatin condensation and preventing access of the transcription machinery. It is part of a complex which also includes histone deacetylases and transcriptional regulators similar to the yeast protein Sin3p. This gene is located between the Charcot-Marie-Tooth and Smith-Magenis syndrome critical regions on chromosome 17. Alternate splicing results in multiple transcript variants. Pseudogenes of this gene are found on chromosomes 17 and 20.

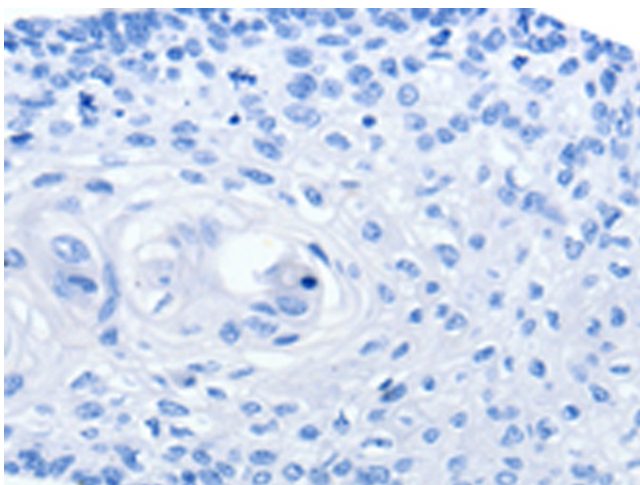
**Synonyms:** hN-CoR; N-CoR; N-CoR1; PPP1R109; TRAC1

**Protein Families:** Druggable Genome

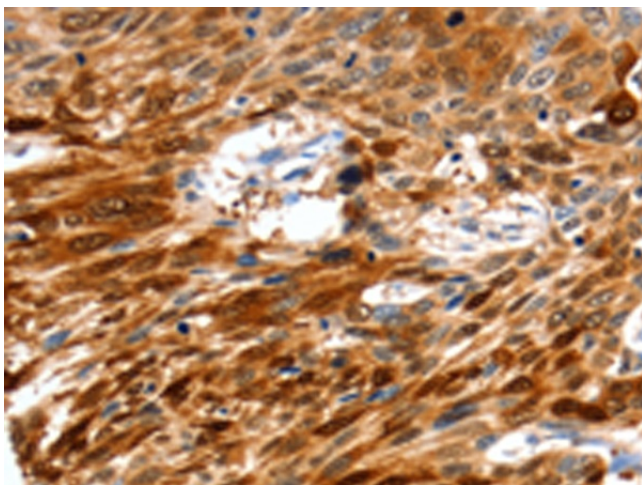
**Product images:**



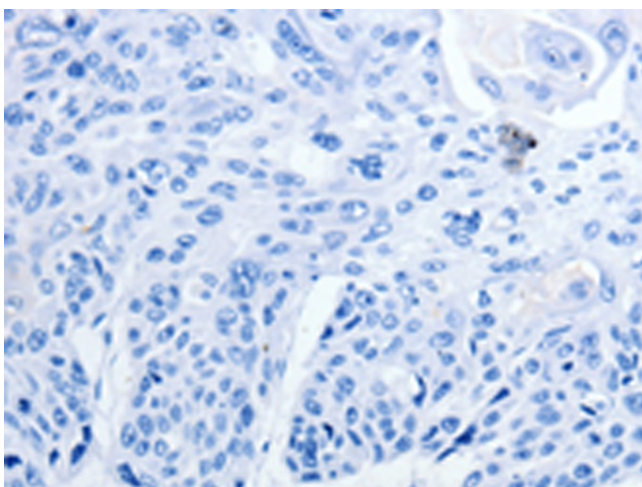
Immunohistochemistry of paraffin-embedded Human cervical cancer tissue using [TA322512] (NCOR1 Antibody) at dilution 1/60 (Original magnification: ×200)



Immunohistochemistry of paraffin-embedded Human cervical cancer tissue using [TA322512] (NCOR1 Antibody) at dilution 1/60, treated with synthetic peptide. (Original magnification: ×200)



Immunohistochemistry of paraffin-embedded Human esophagus cancer tissue using [TA322512] (NCOR1 Antibody) at dilution 1/60 (Original magnification:  $\times 200$ )



Immunohistochemistry of paraffin-embedded Human esophagus cancer tissue using [TA322512] (NCOR1 Antibody) at dilution 1/60, treated with synthetic peptide. (Original magnification:  $\times 200$ )