

## Product datasheet for **TA322508S**

### CLEC10A Rabbit Polyclonal Antibody

#### Product data:

Product Type:	Primary Antibodies
Applications:	IHC, WB
Recommended Dilution:	WB: 200-1000 WB positive control: Human skin tissue lysate IHC: 40-200 Positive control: Human tonsil Predicted cell location: Cytoplasm
Reactivity:	Human
Host:	Rabbit
Isotype:	IgG
Clonality:	Polyclonal
Immunogen:	Fusion protein corresponding to a region derived from 61-316 amino acids of Human C-type lectin domain family 10 member A
Formulation:	PBS pH7.3, 0.05% NaN <sub>3</sub> , 50% glycerol
Purification:	Antigen affinity purification
Conjugation:	Unconjugated
Storage:	Store at -20°C as received.
Stability:	Stable for 12 months from date of receipt.
Gene Name:	C-type lectin domain family 10 member A
Database Link:	<a href="#">NP_006335</a> <a href="#">Entrez Gene 10462 Human</a> <a href="#">Q8IUN9</a>
Background:	This gene encodes a member of the C-type lectin/C-type lectin-like domain (CTL/CTLD) superfamily. Members of this family share a common protein fold and have diverse functions; such as cell adhesion; cell-cell signalling; glycoprotein turnover; and roles in inflammation and immune response. The encoded type 2 transmembrane protein may function as a cell surface antigen. Two transcript variants encoding distinct isoforms have been identified for this gene.

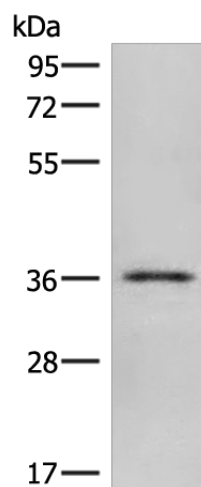


[View online »](#)

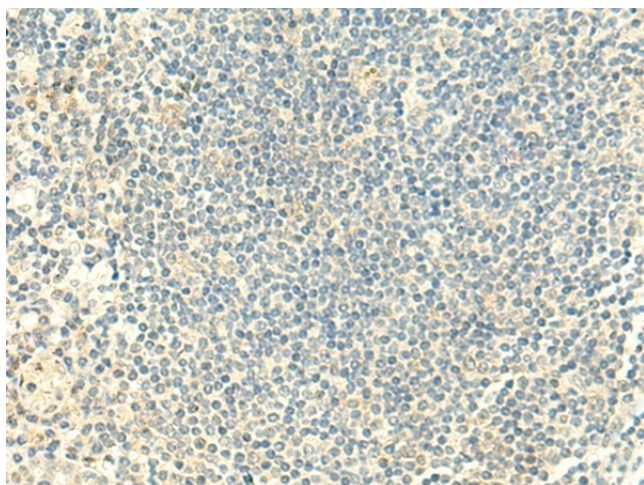
Synonyms: CD301; CLECSF13; CLECSF14; HML; HML2; MGL

Protein Families: Transmembrane

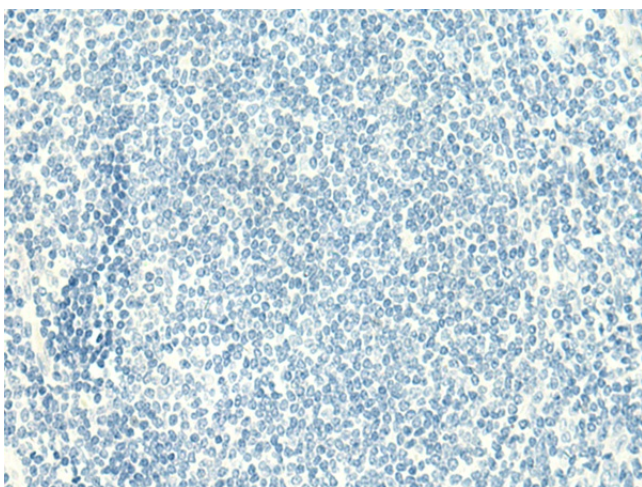
### Product images:



Gel: 8%SDS-PAGE  
Lysate: 40 µg  
Lane: Human skin tissue lysate  
Primary antibody: [TA322508] (CLEC10A Antibody) at dilution 1/300  
Secondary antibody: Goat anti rabbit IgG at 1/8000 dilution  
Exposure time: 1 minute



Immunohistochemistry of paraffin-embedded Human tonsil tissue using [TA322508] (CLEC10A Antibody) at dilution 1/50 (Original magnification: ×200)



Immunohistochemistry of paraffin-embedded Human tonsil tissue using [TA322508] (CLEC10A Antibody) at dilution 1/50, treated with fusion protein. (Original magnification:  $\times 200$ )