

Product datasheet for **TA322504S**

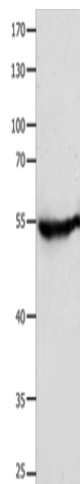
CAP2 Rabbit Polyclonal Antibody

Product data:

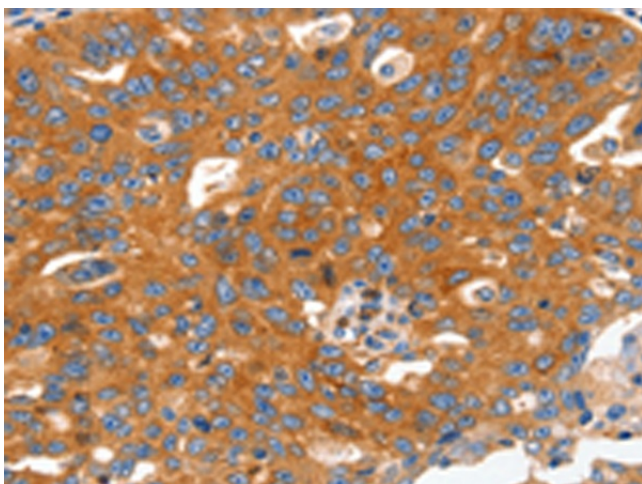
Product Type:	Primary Antibodies
Applications:	IHC, WB
Recommended Dilution:	WB: 500-2000 WB positive control: Human fetal muscle tissue IHC: 60-200 Positive control: Human ovarian cancer Predicted cell location: Cytoplasm, Cell membrane
Reactivity:	Human, Mouse, Rat
Host:	Rabbit
Isotype:	IgG
Clonality:	Polyclonal
Immunogen:	Fusion protein corresponding to a C terminal 300 amino acids of human CAP, adenylate cyclase-associated protein, 2 (yeast)
Formulation:	PBS pH7.3, 0.05% NaN ₃ , 50% glycerol
Purification:	Antigen affinity purification
Conjugation:	Unconjugated
Storage:	Store at -20°C as received.
Stability:	Stable for 12 months from date of receipt.
Predicted Protein Size:	53 kDa
Gene Name:	CAP, adenylate cyclase-associated protein, 2 (yeast)
Database Link:	NP_006357 Entrez Gene 67252 Mouse Entrez Gene 116653 Rat Entrez Gene 10486 Human P40123
Background:	This gene was identified by its similarity to the gene for human adenylyl cyclase-associated protein. The function of the protein encoded by this gene is unknown. However; the protein appears to be able to interact with adenylyl cyclase-associated protein and actin.
Synonyms:	2 (yeast); 2810452G09Rik; adenylate cyclase-associated protein; adenylyl cyclase-associated protein 2; CAP; OTTHUMP00000039303



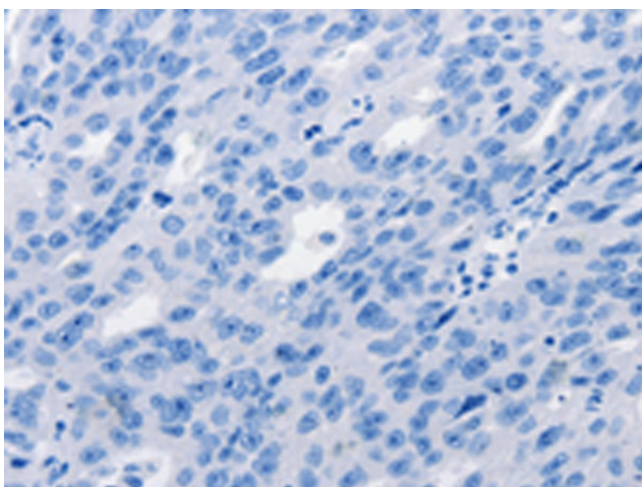
[View online »](#)

Product images:

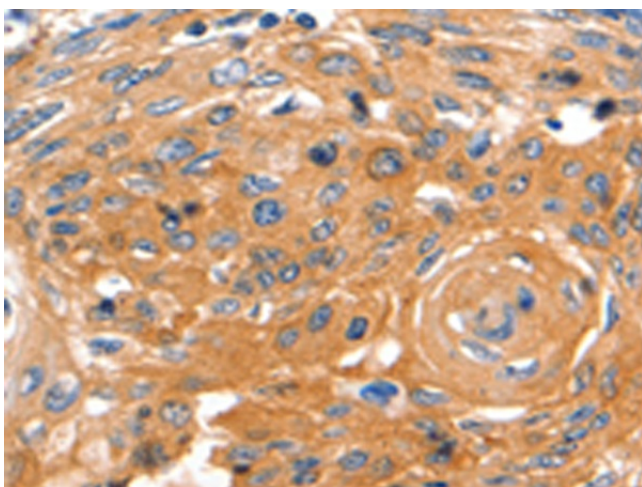
Gel: 8%SDS-PAGE
Lysate: 40 μ g
Lane: Human fetal muscle tissue
Primary antibody: [TA322504] (CAP2 Antibody) at dilution 1/700
Secondary antibody: Goat anti rabbit IgG at 1/8000 dilution
Exposure time: 1 minute



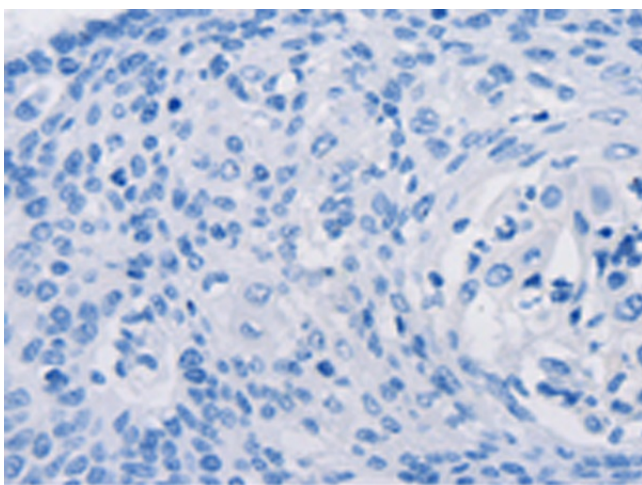
Immunohistochemistry of paraffin-embedded Human ovarian cancer tissue using [TA322504] (CAP2 Antibody) at dilution 1/60 (Original magnification: \times 200)



Immunohistochemistry of paraffin-embedded Human ovarian cancer tissue using [TA322504] (CAP2 Antibody) at dilution 1/60, treated with fusion protein. (Original magnification: $\times 200$)



Immunohistochemistry of paraffin-embedded Human cervical cancer tissue using [TA322504] (CAP2 Antibody) at dilution 1/60 (Original magnification: $\times 200$)



Immunohistochemistry of paraffin-embedded Human cervical cancer tissue using [TA322504] (CAP2 Antibody) at dilution 1/60, treated with fusion protein. (Original magnification: $\times 200$)