

## Product datasheet for **TA322504**

### CAP2 Rabbit Polyclonal Antibody

#### Product data:

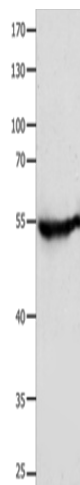
Product Type:	Primary Antibodies
Applications:	IHC, WB
Recommended Dilution:	WB: 500-2000 WB positive control: Human fetal muscle tissue IHC: 60-200 Positive control: Human ovarian cancer Predicted cell location: Cytoplasm, Cell membrane
Reactivity:	Human, Mouse, Rat
Host:	Rabbit
Isotype:	IgG
Clonality:	Polyclonal
Immunogen:	Fusion protein corresponding to a C terminal 300 amino acids of human CAP, adenylate cyclase-associated protein, 2 (yeast)
Formulation:	PBS pH7.3, 0.05% NaN <sub>3</sub> , 50% glycerol
Concentration:	lot specific
Purification:	Antigen affinity purification
Conjugation:	Unconjugated
Storage:	Store at -20°C as received.
Stability:	Stable for 12 months from date of receipt.
Predicted Protein Size:	53 kDa
Gene Name:	CAP, adenylate cyclase-associated protein, 2 (yeast)
Database Link:	<a href="#">NP_006357</a> <a href="#">Entrez Gene 67252 Mouse</a> <a href="#">Entrez Gene 116653 Rat</a> <a href="#">Entrez Gene 10486 Human</a> <a href="#">P40123</a>
Background:	This gene was identified by its similarity to the gene for human adenylyl cyclase-associated protein. The function of the protein encoded by this gene is unknown. However; the protein appears to be able to interact with adenylyl cyclase-associated protein and actin.



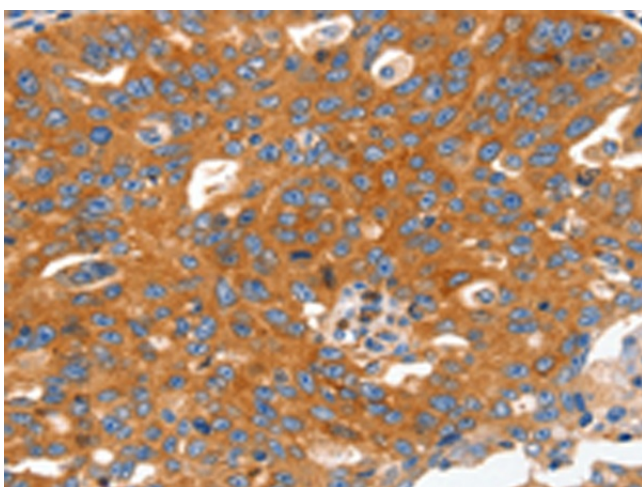
[View online »](#)

**Synonyms:** 2 (yeast); 2810452G09Rik; adenylate cyclase-associated protein; adenylyl cyclase-associated protein 2; CAP; OTTHUMP00000039303

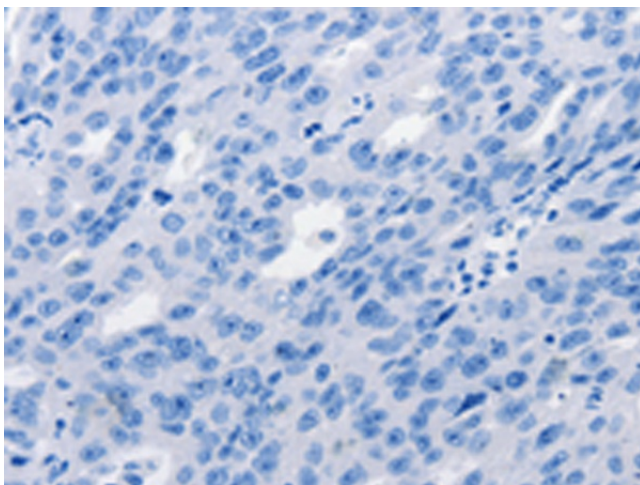
**Product images:**



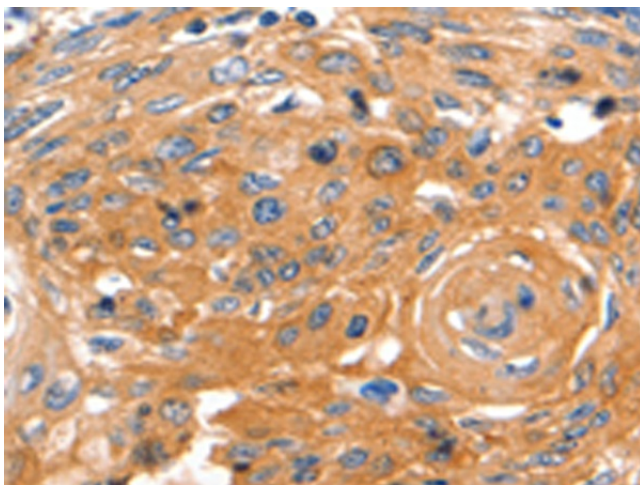
Gel: 8%SDS-PAGE  
Lysate: 40  $\mu$ g  
Lane: Human fetal muscle tissue  
Primary antibody: TA322504 (CAP2 Antibody) at dilution 1/700  
Secondary antibody: Goat anti rabbit IgG at 1/8000 dilution  
Exposure time: 1 minute



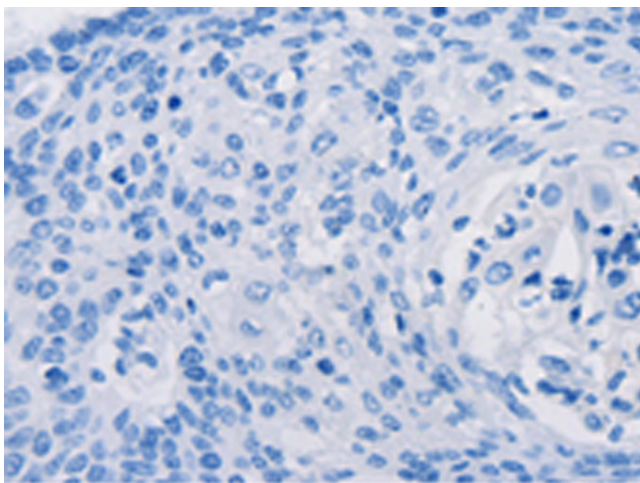
Immunohistochemistry of paraffin-embedded Human ovarian cancer tissue using TA322504 (CAP2 Antibody) at dilution 1/60 (Original magnification:  $\times$ 200)



Immunohistochemistry of paraffin-embedded Human ovarian cancer tissue using TA322504 (CAP2 Antibody) at dilution 1/60, treated with fusion protein. (Original magnification:  $\times 200$ )



Immunohistochemistry of paraffin-embedded Human cervical cancer tissue using TA322504 (CAP2 Antibody) at dilution 1/60 (Original magnification:  $\times 200$ )



Immunohistochemistry of paraffin-embedded Human cervical cancer tissue using TA322504 (CAP2 Antibody) at dilution 1/60, treated with fusion protein. (Original magnification:  $\times 200$ )