

## Product datasheet for **TA322502S**

### AGR2 Rabbit Polyclonal Antibody

#### Product data:

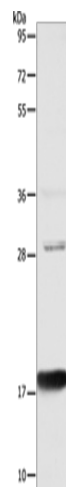
Product Type:	Primary Antibodies
Applications:	IHC, WB
Recommended Dilution:	WB: 1000-5000 WB positive control: Mouse Large intestine tissue IHC: 10-50 Positive control: Human renal cancer Predicted cell location: Cytoplasm
Reactivity:	Human, Mouse
Host:	Rabbit
Isotype:	IgG
Clonality:	Polyclonal
Immunogen:	Full length fusion protein
Formulation:	PBS pH7.3, 0.05% NaN <sub>3</sub> , 50% glycerol
Purification:	Antigen affinity purification
Conjugation:	Unconjugated
Storage:	Store at -20°C as received.
Stability:	Stable for 12 months from date of receipt.
Predicted Protein Size:	20 kDa
Gene Name:	anterior gradient 2, protein disulphide isomerase family member
Database Link:	<a href="#">NP_006399</a> <a href="#">Entrez Gene 23795 Mouse</a> <a href="#">Entrez Gene 10551 Human</a> <a href="#">O95994</a>
Background:	Anterior gradient protein 2 homolog (AGR2) is a human protein originally discovered in <i>Xenopus laevis</i> ; encoded for by the gene of the same name. In <i>Xenopus</i> AGR2 is an important role in cement gland differentiation; however in human cancer cell lines high levels of AGR2 correlate with reduction of the p53 response and AGR2 levels are elevated in the preneoplastic tissue Barrett's oesophagus.
Synonyms:	AG2; GOB-4; HAG-2; HEL-S-116; PDIA17; XAG-2



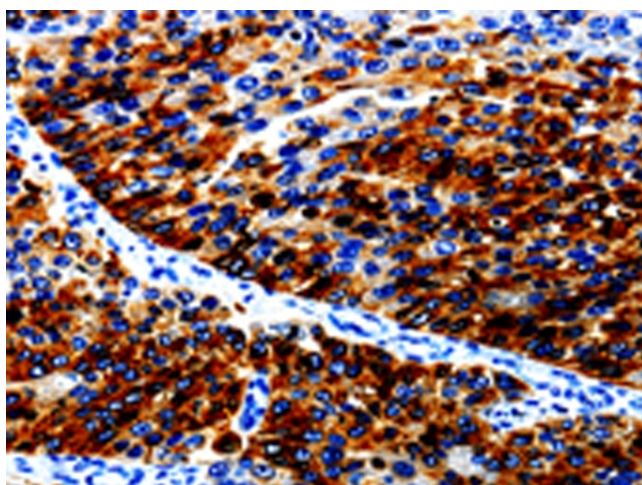
[View online »](#)

Protein Families: Secreted Protein

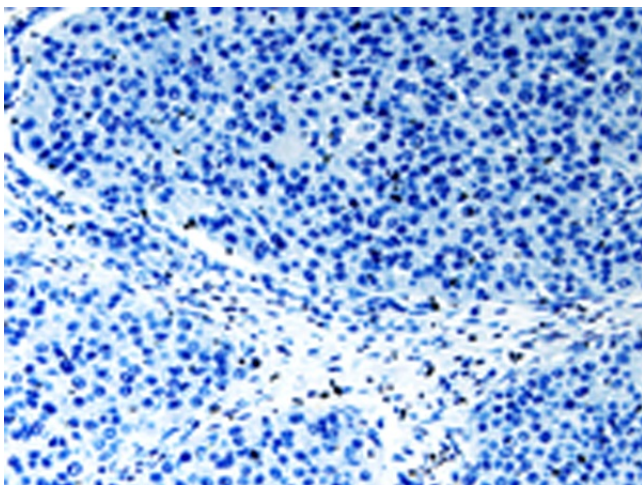
### Product images:



Gel: 10%SDS-PAGE  
Lysate: 40  $\mu$ g  
Lane: Mouse Large intestine tissue  
Primary antibody: [TA322502] (AGR2 Antibody) at dilution 1/1000  
Secondary antibody: Goat anti rabbit IgG at 1/8000 dilution  
Exposure time: 20 seconds



Immunohistochemistry of paraffin-embedded Human renal cancer tissue using [TA322502] (AGR2 Antibody) at dilution 1/10 (Original magnification:  $\times$ 200)



Immunohistochemistry of paraffin-embedded Human renal cancer tissue using [TA322502] (AGR2 Antibody) at dilution 1/10, treated with fusion protein. (Original magnification:  $\times 200$ )