

Product datasheet for **TA322502**

AGR2 Rabbit Polyclonal Antibody

Product data:

Product Type:	Primary Antibodies
Applications:	IHC, WB
Recommended Dilution:	WB: 1000-5000 WB positive control: Mouse Large intestine tissue IHC: 10-50 Positive control: Human renal cancer Predicted cell location: Cytoplasm
Reactivity:	Human, Mouse
Host:	Rabbit
Isotype:	IgG
Clonality:	Polyclonal
Immunogen:	Full length fusion protein
Formulation:	PBS pH7.3, 0.05% NaN ₃ , 50% glycerol
Concentration:	lot specific
Purification:	Antigen affinity purification
Conjugation:	Unconjugated
Storage:	Store at -20°C as received.
Stability:	Stable for 12 months from date of receipt.
Predicted Protein Size:	20 kDa
Gene Name:	anterior gradient 2, protein disulphide isomerase family member
Database Link:	NP_006399 Entrez Gene 23795 Mouse Entrez Gene 10551 Human O95994

Background: Anterior gradient protein 2 homolog (AGR2) is a human protein originally discovered in *Xenopus laevis*; encoded for by the gene of the same name. In *Xenopus* AGR2 is an important role in cement gland differentiation; however in human cancer cell lines high levels of AGR2 correlate with reduction of the p53 response and AGR2 levels are elevated in the preneoplastic tissue Barrett's oesophagus.

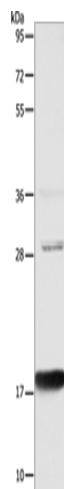


[View online »](#)

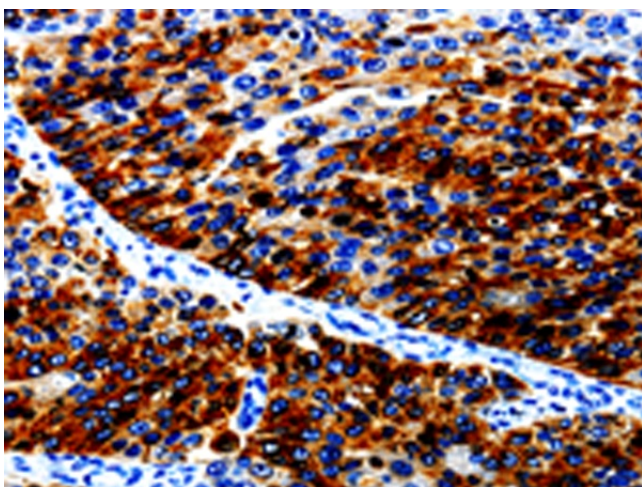
Synonyms: AG2; GOB-4; HAG-2; HEL-S-116; PDIA17; XAG-2

Protein Families: Secreted Protein

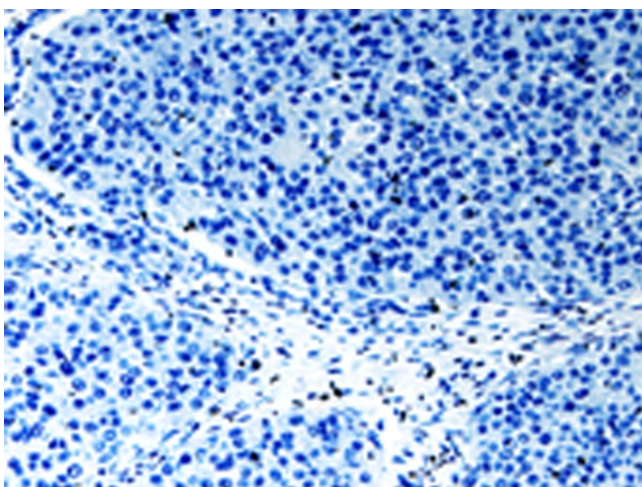
Product images:



Gel: 10%SDS-PAGE
Lysate: 40 μ g
Lane: Mouse Large intestine tissue
Primary antibody: TA322502 (AGR2 Antibody) at dilution 1/1000
Secondary antibody: Goat anti rabbit IgG at 1/8000 dilution
Exposure time: 20 seconds



Immunohistochemistry of paraffin-embedded Human renal cancer tissue using TA322502 (AGR2 Antibody) at dilution 1/10 (Original magnification: \times 200)



Immunohistochemistry of paraffin-embedded Human renal cancer tissue using TA322502 (AGR2 Antibody) at dilution 1/10, treated with fusion protein. (Original magnification: $\times 200$)