

Product datasheet for **TA322499**

CRMP3 (DPYSL4) Rabbit Polyclonal Antibody

Product data:

Product Type:	Primary Antibodies
Applications:	IHC, WB
Recommended Dilution:	WB: 500-1000 WB positive control: Human fetal brain tissue IHC: 25-100 Positive control: Human cervical cancer Predicted cell location: Cytoplasm
Reactivity:	Human, Mouse, Rat
Host:	Rabbit
Isotype:	IgG
Clonality:	Polyclonal
Immunogen:	Synthetic peptide corresponding to a region derived from 507-522 amino acids of Human dihydropyrimidinase-like 4
Formulation:	PBS pH7.3, 0.05% NaN ₃ , 50% glycerol
Concentration:	lot specific
Purification:	Antigen affinity purification
Conjugation:	Unconjugated
Storage:	Store at -20°C as received.
Stability:	Stable for 12 months from date of receipt.
Predicted Protein Size:	62 kDa
Gene Name:	dihydropyrimidinase like 4
Database Link:	NP_006417 Entrez Gene 25417 Rat Entrez Gene 26757 Mouse Entrez Gene 10570 Human O14531



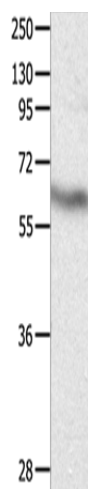
[View online »](#)

Background:

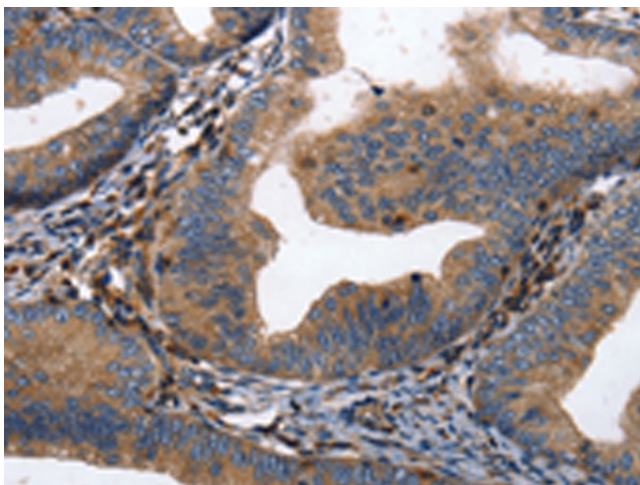
Collapsin response mediator protein 3 is an enzyme that in humans is encoded by the CRMP3 gene. It is necessary for signaling by class 3 semaphorins and subsequent remodeling of the cytoskeleton. And plays a role in axon guidance; neuronal growth cone collapse and cell migration. Homotetramer; and heterotetramer with CRMP1; DPYSL2; DPYSL3 or DPYSL5. Interacts with PLEXA1. Phosphorylated upon DNA damage; probably by ATM or ATR.

Synonyms:

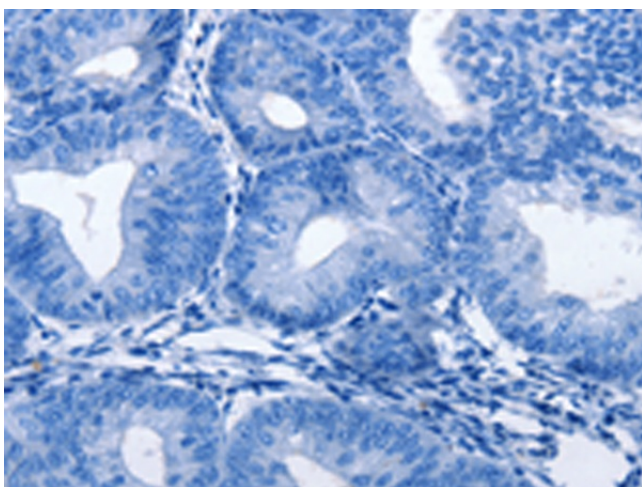
CRMP3; DRP-4; ULIP4

Product images:

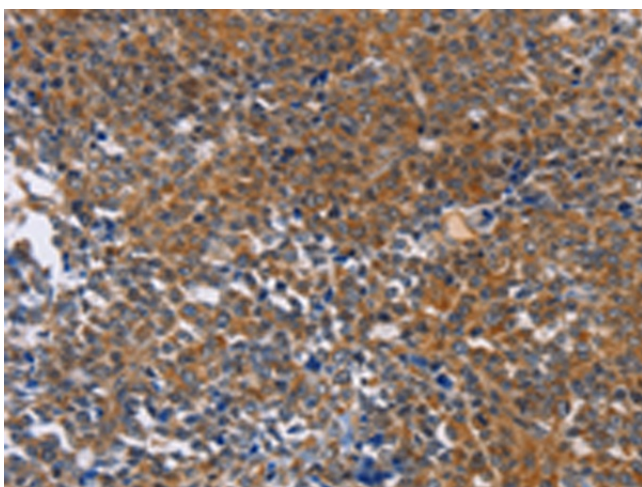
Gel: 8%SDS-PAGE
Lysate: 30 µg
Lane: Human fetal brain tissue
Primary antibody: TA322499 (DPYSL4 Antibody) at dilution 1/500
Secondary antibody: Goat anti rabbit IgG at 1/8000 dilution
Exposure time: 20 seconds



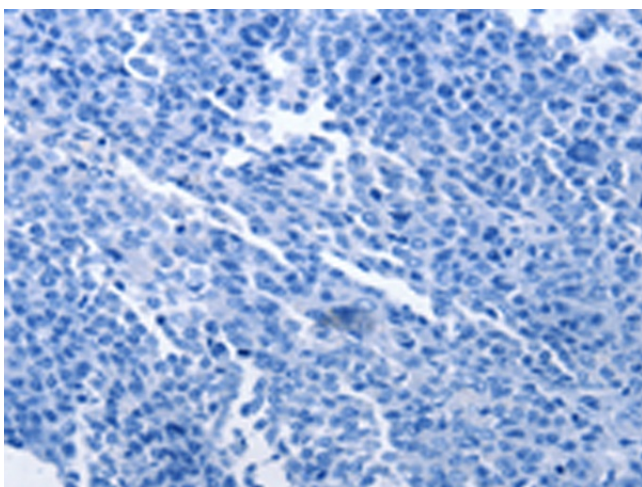
Immunohistochemistry of paraffin-embedded Human cervical cancer tissue using TA322499 (DPYSL4 Antibody) at dilution 1/15 (Original magnification: ×200)



Immunohistochemistry of paraffin-embedded Human cervical cancer tissue using TA322499 (DPYSL4 Antibody) at dilution 1/15, treated with synthetic peptide. (Original magnification: $\times 200$)



Immunohistochemistry of paraffin-embedded Human ovarian cancer tissue using TA322499 (DPYSL4 Antibody) at dilution 1/15 (Original magnification: $\times 200$)



Immunohistochemistry of paraffin-embedded Human ovarian cancer tissue using TA322499 (DPYSL4 Antibody) at dilution 1/15, treated with synthetic peptide. (Original magnification: $\times 200$)