

## Product datasheet for **TA322497**

### AMSH (STAMPB) Rabbit Polyclonal Antibody

#### Product data:

Product Type:	Primary Antibodies
Applications:	IHC
Recommended Dilution:	IHC: 15-50 Positive control: Human liver cancer Predicted cell location: Cytoplasm
Reactivity:	Human, Mouse, Rat
Host:	Rabbit
Isotype:	IgG
Clonality:	Polyclonal
Immunogen:	Fusion protein corresponding to a region derived from 252-361 amino acids of human STAM binding protein
Formulation:	PBS pH7.3, 0.05% NaN <sub>3</sub> , 50% glycerol
Concentration:	lot specific
Purification:	Antigen affinity purification
Conjugation:	Unconjugated
Storage:	Store at -20°C as received.
Stability:	Stable for 12 months from date of receipt.
Gene Name:	STAM binding protein
Database Link:	<a href="#">NP_006454</a> <a href="#">Entrez Gene 70527 Mouse</a> <a href="#">Entrez Gene 171565 Rat</a> <a href="#">Entrez Gene 10617 Human</a> <a href="#">O95630</a>

**Background:** Cytokine-mediated signal transduction in the JAK-STAT cascade requires the involvement of adaptor molecules. One such signal-transducing adaptor molecule contains an SH3 domain that is required for induction of MYC and cell growth. The protein encoded by this gene binds to the SH3 domain of the signal-transducing adaptor molecule, and plays a critical role in cytokine-mediated signaling for MYC induction and cell cycle progression. Multiple alternatively spliced transcript variants encoding the same protein isoform have been found for this gene.



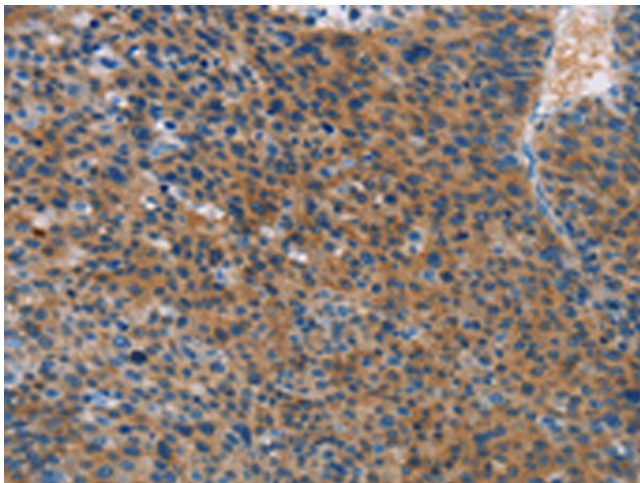
[View online »](#)

Synonyms: AMSH; MICCAP

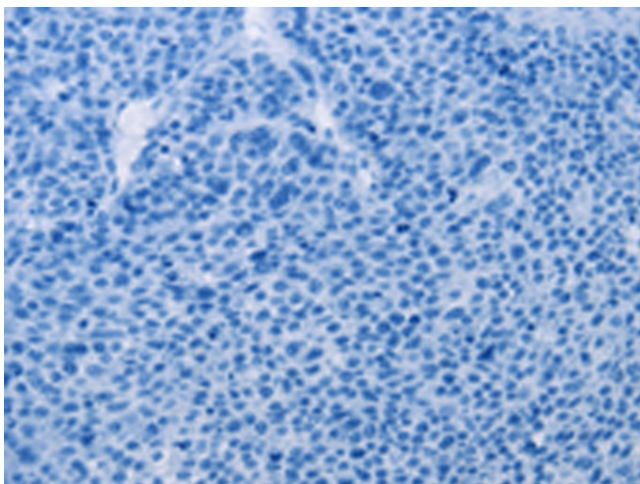
Protein Families: Druggable Genome

Protein Pathways: Endocytosis

### Product images:



Immunohistochemistry of paraffin-embedded Human liver cancer tissue using TA322497 (STAMPB Antibody) at dilution 1/15 (Original magnification:  $\times 200$ )



Immunohistochemistry of paraffin-embedded Human liver cancer tissue using TA322497 (STAMPB Antibody) at dilution 1/15, treated with fusion protein. (Original magnification:  $\times 200$ )