

Product datasheet for **TA322490**

Galectin 2 (LGALS2) Rabbit Polyclonal Antibody

Product data:

Product Type:	Primary Antibodies
Applications:	IHC, WB
Recommended Dilution:	WB: 500-2000 WB positive control: Human fetal intestines tissue lysate IHC: 50-200 Positive control: Human liver cancer Predicted cell location: Cytoplasm
Reactivity:	Human
Host:	Rabbit
Isotype:	IgG
Clonality:	Polyclonal
Immunogen:	Full length fusion protein
Formulation:	PBS pH7.3, 0.05% NaN ₃ , 50% glycerol
Concentration:	lot specific
Purification:	Antigen affinity purification
Conjugation:	Unconjugated
Storage:	Store at -20°C as received.
Stability:	Stable for 12 months from date of receipt.
Predicted Protein Size:	15 kDa
Gene Name:	galectin 2
Database Link:	NP_006489 Entrez Gene 3957 Human P05162

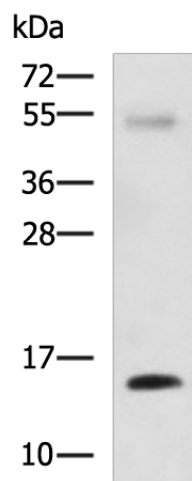
Background: The protein encoded by this gene is a soluble beta-galactoside binding lectin. The encoded protein is found as a homodimer and can bind to lymphotoxin-alpha. A single nucleotide polymorphism in an intron of this gene can alter the transcriptional level of the protein; with a resultant increased risk of myocardial infarction. This protein binds beta-galactoside. Its physiological function is not yet known.



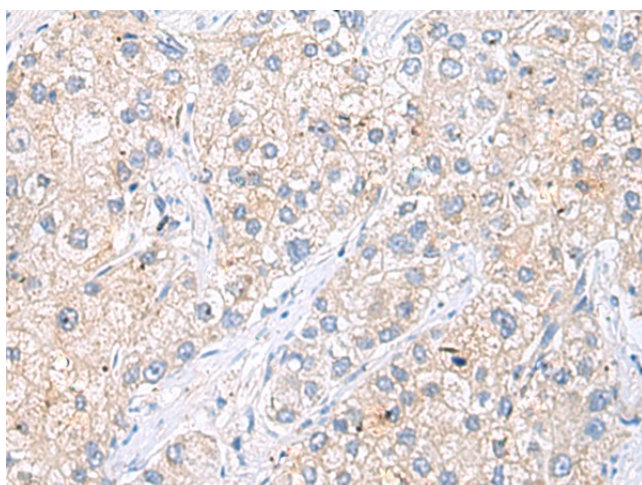
[View online »](#)

Synonyms: HL14

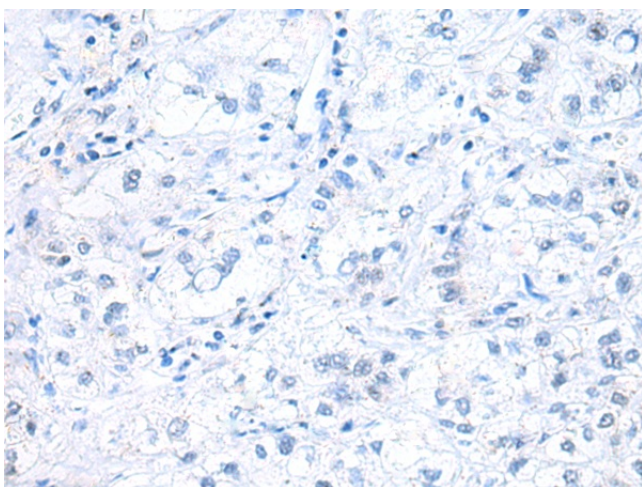
Product images:



Gel: 12%SDS-PAGE
Lysate: 40 μ g
Lane: Human fetal intestines tissue lysate
Primary antibody: TA322490 (LGALS2 Antibody) at dilution 1/1000
Secondary antibody: Goat anti rabbit IgG at 1/5000 dilution
Exposure time: 2 minutes



Immunohistochemistry of paraffin-embedded Human liver cancer tissue using TA322490 (LGALS2 Antibody) at dilution 1/85 (Original magnification: \times 200)



Immunohistochemistry of paraffin-embedded Human liver cancer tissue using TA322490 (LGALS2 Antibody) at dilution 1/85, treated with fusion protein. (Original magnification: ×200)