

## Product datasheet for **TA322487S**

### Glucose Transporter GLUT1 (SLC2A1) Rabbit Polyclonal Antibody

#### Product data:

Product Type:	Primary Antibodies
Applications:	IHC, WB
Recommended Dilution:	WB: 500-2000 WB positive control: Human seminoma tissue IHC: 50-200 Positive control: Human lung cancer Predicted cell location: Cytoplasm
Reactivity:	Human, Mouse, Rat
Host:	Rabbit
Isotype:	IgG
Clonality:	Polyclonal
Immunogen:	Synthetic peptide peptide corresponding to a region derived from 1-13 amino acids of human solute carrier family 2 (facilitated glucose transporter), member 1
Formulation:	PBS pH7.3, 0.05% NaN <sub>3</sub> , 50% glycerol
Concentration:	lot specific
Purification:	Antigen affinity purification
Conjugation:	Unconjugated
Storage:	Store at -20°C as received.
Stability:	Stable for 12 months from date of receipt.
Predicted Protein Size:	54 kDa
Gene Name:	solute carrier family 2 member 1
Database Link:	<a href="#">NP_006507</a> <a href="#">Entrez Gene 20525 Mouse</a> <a href="#">Entrez Gene 24778 Rat</a> <a href="#">Entrez Gene 6513 Human</a> <a href="#">P11166</a>



[View online »](#)

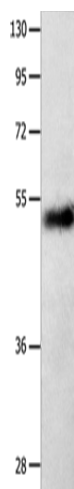
**Background:** This gene encodes a major glucose transporter in the mammalian blood-brain barrier. Mutations in this gene have been found in a family with paroxysmal exertion-induced dyskinesia. Facilitative glucose transporter. This isoform may be responsible for constitutive or basal glucose uptake. Has a very broad substrate specificity; can transport a wide range of aldoses including both pentoses and hexoses.

**Synonyms:** CSE; DYT9; DYT17; DYT18; EIG12; GLUT; GLUT-1; GLUT1; GLUT1DS; HTLVLR; PED; SDCHCN

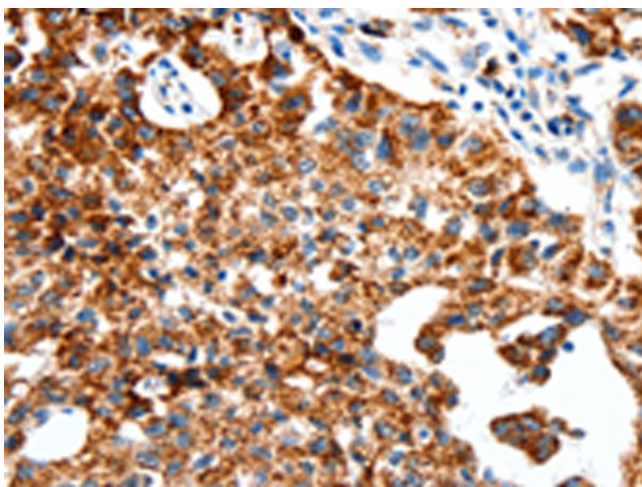
**Protein Families:** Druggable Genome, ES Cell Differentiation/IPS, Transmembrane

**Protein Pathways:** Adipocytokine signaling pathway, Pathways in cancer, Renal cell carcinoma

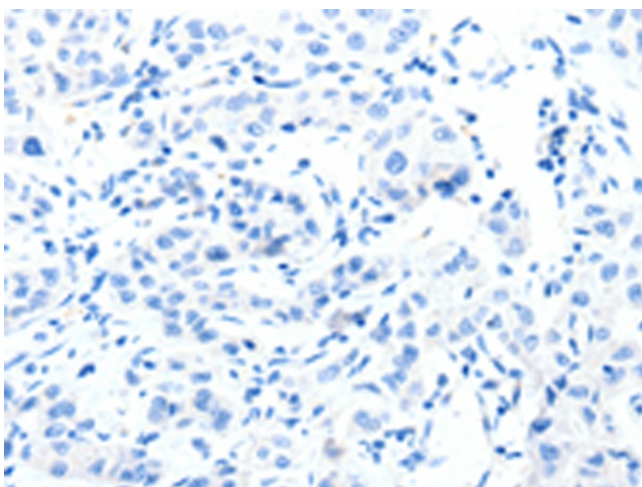
### Product images:



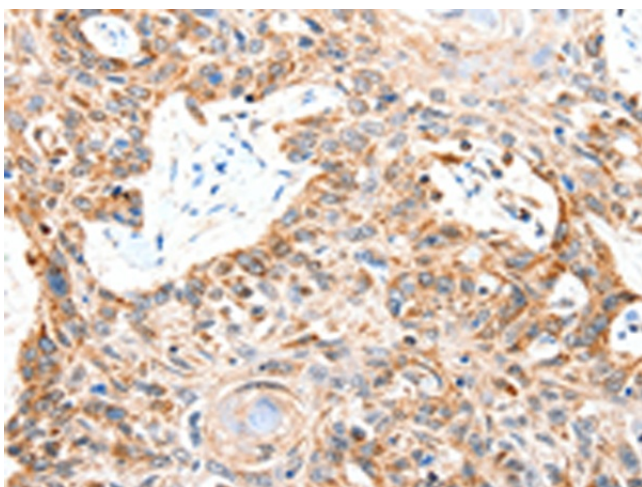
Gel: 10%SDS-PAGE  
Lysate: 40 µg  
Lane: Human seminoma tissue  
Primary antibody: [TA322487] (SLC2A1 Antibody) at dilution 1/850  
Secondary antibody: Goat anti rabbit IgG at 1/8000 dilution  
Exposure time: 10 minutes



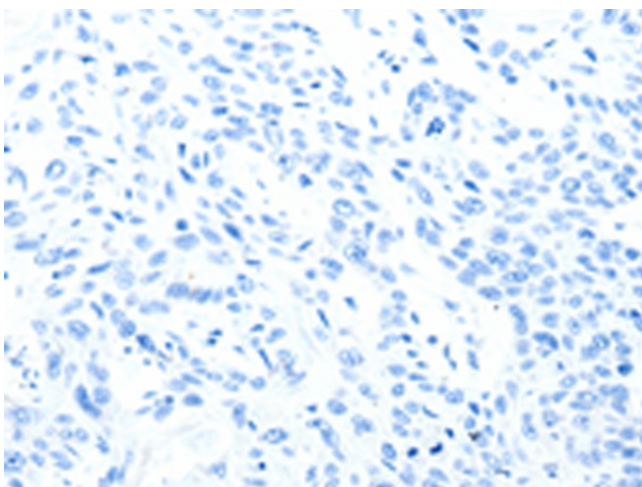
Immunohistochemistry of paraffin-embedded Human lung cancer tissue using [TA322487] (SLC2A1 Antibody) at dilution 1/50 (Original magnification: ×200)



Immunohistochemistry of paraffin-embedded Human lung cancer tissue using [TA322487] (SLC2A1 Antibody) at dilution 1/50, treated with synthetic peptide. (Original magnification:  $\times 200$ )



Immunohistochemistry of paraffin-embedded Human esophagus cancer tissue using [TA322487] (SLC2A1 Antibody) at dilution 1/50 (Original magnification:  $\times 200$ )



Immunohistochemistry of paraffin-embedded Human esophagus cancer tissue using [TA322487] (SLC2A1 Antibody) at dilution 1/50, treated with synthetic peptide. (Original magnification:  $\times 200$ )