

Product datasheet for **TA322481**

MAP4K5 Rabbit Polyclonal Antibody

Product data:

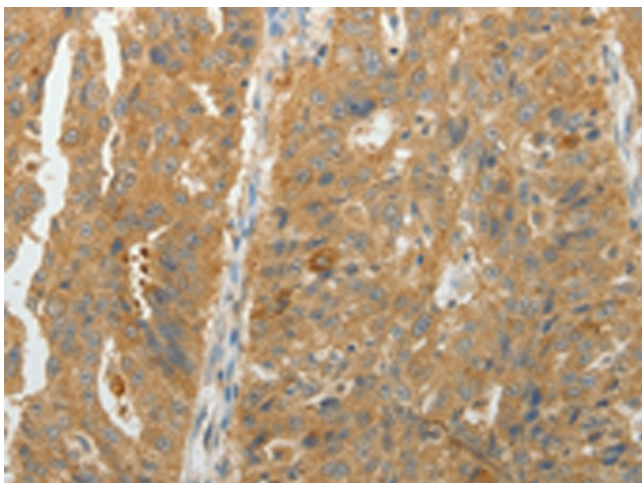
Product Type:	Primary Antibodies
Applications:	IHC
Recommended Dilution:	IHC: 15-50 Positive control: Human ovarian cancer Predicted cell location: Cytoplasm
Reactivity:	Human, Mouse
Host:	Rabbit
Isotype:	IgG
Clonality:	Polyclonal
Immunogen:	Fusion protein corresponding to a region derived from 506-819 amino acids of human mitogen-activated protein kinase kinase kinase kinase?
Formulation:	PBS pH7.3, 0.05% NaN ₃ , 50% glycerol
Concentration:	lot specific
Purification:	Antigen affinity purification
Conjugation:	Unconjugated
Storage:	Store at -20°C as received.
Stability:	Stable for 12 months from date of receipt.
Gene Name:	mitogen-activated protein kinase kinase kinase kinase 5
Database Link:	NP_006566 Entrez Gene 399510 Mouse Entrez Gene 11183 Human Q9Y4K4
Background:	This gene encodes a member of the serine/threonine protein kinase family; that is highly similar to yeast SPS1/STE20 kinase. Yeast SPS1/STE20 functions near the beginning of the MAP kinase signal cascades that is essential for yeast pheromone response. This kinase was shown to activate Jun kinase in mammalian cells; which suggested a role in stress response. Two alternatively spliced transcript variants encoding the same protein have been described for this gene.?
Synonyms:	GCKR; KHS; KHS1; MAPKKK5



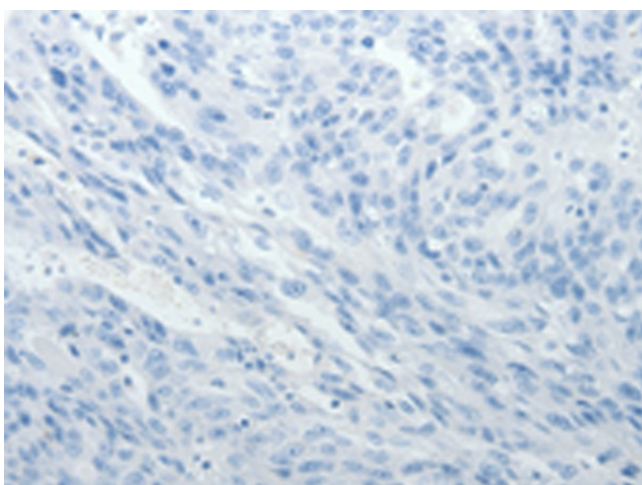
[View online »](#)

Protein Families: Druggable Genome, Protein Kinase

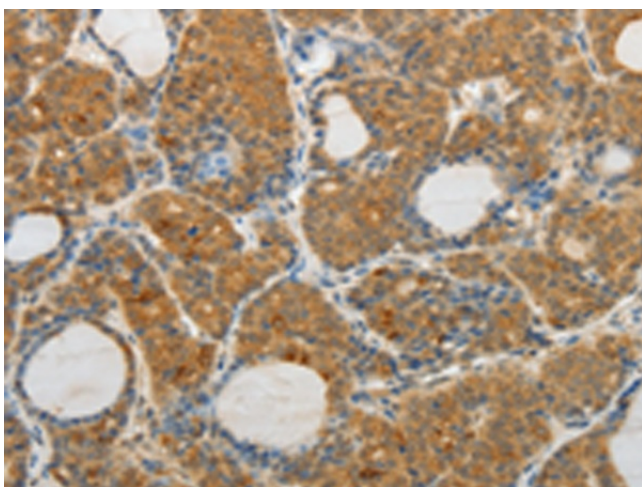
Product images:



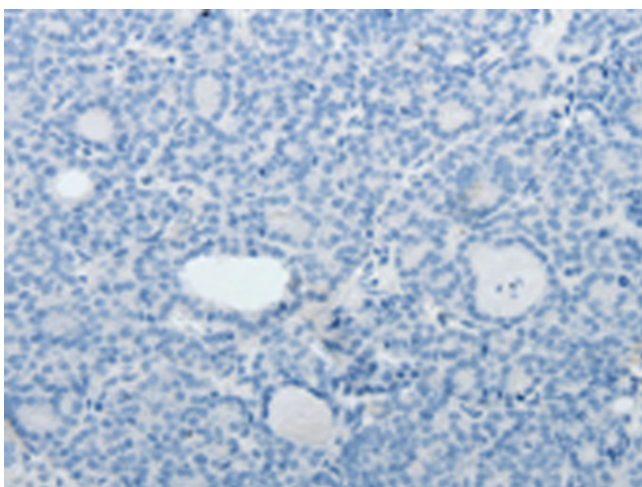
Immunohistochemistry of paraffin-embedded Human ovarian cancer tissue using TA322481 (MAP4K5 Antibody) at dilution 1/10 (Original magnification: $\times 200$)



Immunohistochemistry of paraffin-embedded Human ovarian cancer tissue using TA322481 (MAP4K5 Antibody) at dilution 1/10, treated with fusion protein. (Original magnification: $\times 200$)



Immunohistochemistry of paraffin-embedded Human thyroid cancer tissue using TA322481 (MAP4K5 Antibody) at dilution 1/10 (Original magnification: $\times 200$)



Immunohistochemistry of paraffin-embedded Human thyroid cancer tissue using TA322481 (MAP4K5 Antibody) at dilution 1/10, treated with fusion protein. (Original magnification: $\times 200$)