

## Product datasheet for **TA322478**

### NFAT5 Rabbit Polyclonal Antibody

#### Product data:

Product Type:	Primary Antibodies
Applications:	IHC
Recommended Dilution:	IHC: 15-50 Positive control: Human liver cancer Predicted cell location: Cytoplasm, Nucleus
Reactivity:	Human
Host:	Rabbit
Isotype:	IgG
Clonality:	Polyclonal
Immunogen:	Synthetic peptide corresponding to a region derived from 711-724 amino acids of Human nuclear factor of activated T-cells 5, tonicity-responsive
Formulation:	PBS pH7.3, 0.05% NaN <sub>3</sub> , 50% glycerol
Concentration:	lot specific
Purification:	Antigen affinity purification
Conjugation:	Unconjugated
Storage:	Store at -20°C as received.
Stability:	Stable for 12 months from date of receipt.
Gene Name:	nuclear factor of activated T-cells 5, tonicity-responsive
Database Link:	<a href="#">NP_775322</a> <a href="#">Entrez Gene 10725 Human</a> <a href="#">O94916</a>
Background:	The product of this gene is a member of the nuclear factors of activated T cells family of transcription factors. Proteins belonging to this family play a central role in inducible gene transcription during the immune response. This protein regulates gene expression induced by osmotic stress in mammalian cells. Unlike monomeric members of this protein family; this protein exists as a homodimer and forms stable dimers with DNA elements. Multiple transcript variants encoding different isoforms have been found for this gene.
Synonyms:	NF-AT5; NFATL1; NFATZ; OREBP; TONEBP

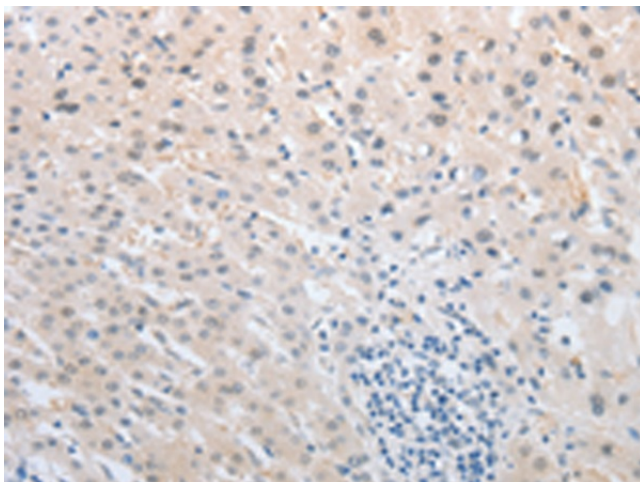


[View online »](#)

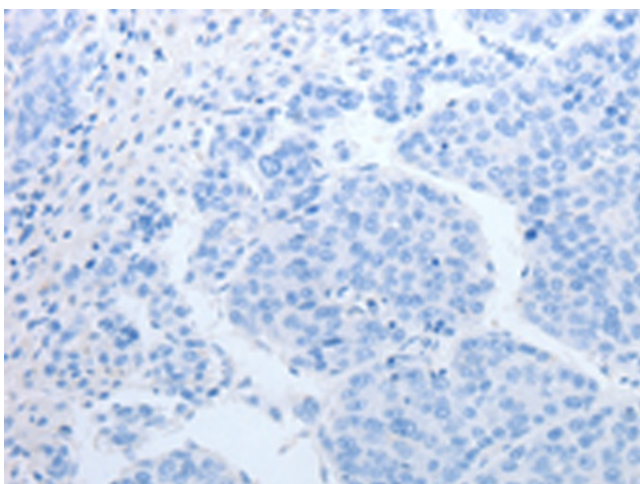
**Protein Families:** Druggable Genome, Transcription Factors

**Protein Pathways:** Axon guidance, B cell receptor signaling pathway, Natural killer cell mediated cytotoxicity, T cell receptor signaling pathway, VEGF signaling pathway, Wnt signaling pathway

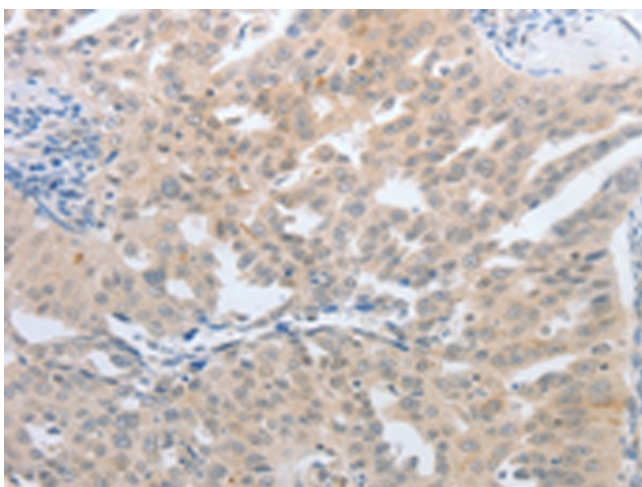
**Product images:**



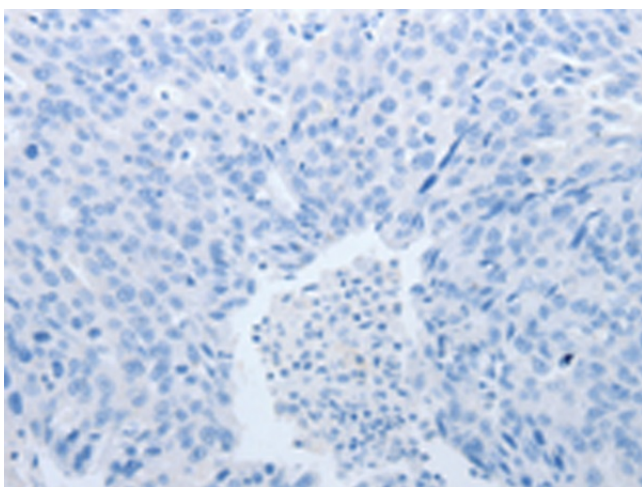
Immunohistochemistry of paraffin-embedded Human liver cancer tissue using TA322478 (NFAT5 Antibody) at dilution 1/25 (Original magnification: ×200)



Immunohistochemistry of paraffin-embedded Human liver cancer tissue using TA322478 (NFAT5 Antibody) at dilution 1/25, treated with synthetic peptide. (Original magnification: ×200)



Immunohistochemistry of paraffin-embedded Human ovarian cancer tissue using TA322478 (NFAT5 Antibody) at dilution 1/25 (Original magnification:  $\times 200$ )



Immunohistochemistry of paraffin-embedded Human ovarian cancer tissue using TA322478 (NFAT5 Antibody) at dilution 1/25, treated with synthetic peptide. (Original magnification:  $\times 200$ )