

## Product datasheet for **TA322477**

### iASPP (PPP1R13L) Rabbit Polyclonal Antibody

#### Product data:

Product Type:	Primary Antibodies
Applications:	IHC, WB
Recommended Dilution:	WB: 500-2000 WB positive control: MCF7 and hela cells IHC: 50-200 Positive control: Human colon cancer Predicted cell location: Cytoplasm
Reactivity:	Human, Mouse
Host:	Rabbit
Isotype:	IgG
Clonality:	Polyclonal
Immunogen:	Synthetic peptide corresponding to a region derived from 781-797 amino acids of Human protein phosphatase 1, regulatory subunit 13 like
Formulation:	PBS pH7.3, 0.05% NaN <sub>3</sub> , 50% glycerol
Concentration:	lot specific
Purification:	Antigen affinity purification
Conjugation:	Unconjugated
Storage:	Store at -20°C as received.
Stability:	Stable for 12 months from date of receipt.
Predicted Protein Size:	89 kDa
Gene Name:	protein phosphatase 1 regulatory subunit 13 like
Database Link:	<a href="#">NP_006654</a> <a href="#">Entrez Gene 333654 Mouse</a> <a href="#">Entrez Gene 10848 Human</a> <a href="#">Q8WUF5</a>



[View online »](#)

**Background:**

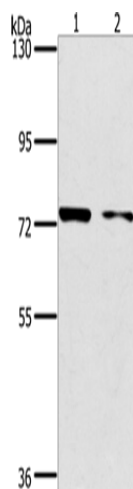
RelA-associated inhibitor is a protein that in humans is encoded by the PPP1R13L gene. Regulator that plays a central role in regulation of apoptosis and transcription via its interaction with NF-kappa-B and p53/TP53 proteins. Blocks transcription of HIV-1 virus by inhibiting the action of both NF-kappa-B and SP1. Also inhibits p53/TP53 function; possibly by preventing the association between p53/TP53 and ASPP1 or ASPP2; and therefore suppressing the subsequent activation of apoptosis. Interacts with RELA NF-kappa-B subunit and with SP1 via its C-terminus part. Interacts with p53/TP53; TP63 and TP73.

**Synonyms:**

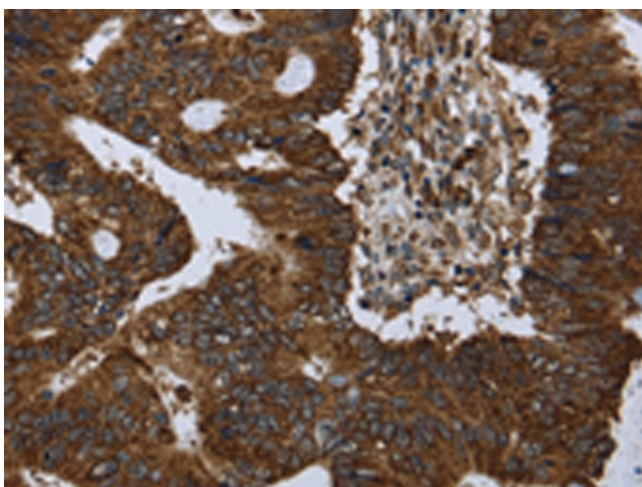
IASPP; NKIP1; RAI; RAI4

**Protein Families:**

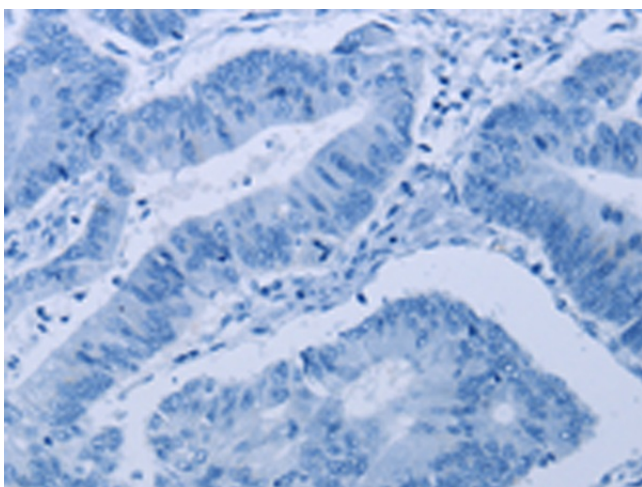
Transcription Factors

**Product images:**

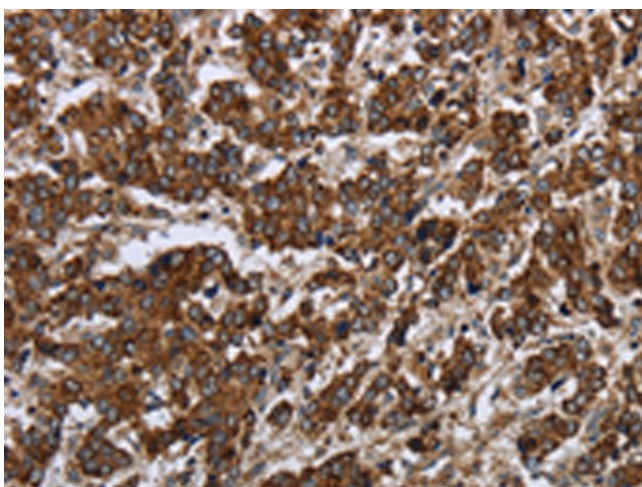
Gel: 6%SDS-PAGE  
Lysate: 40 µg  
Lane 1-2: MCF7 cells  
hela cells  
Primary antibody: TA322477 (PPP1R13L Antibody)  
at dilution 1/500  
Secondary antibody: Goat anti rabbit IgG at  
1/8000 dilution  
Exposure time: 30 seconds



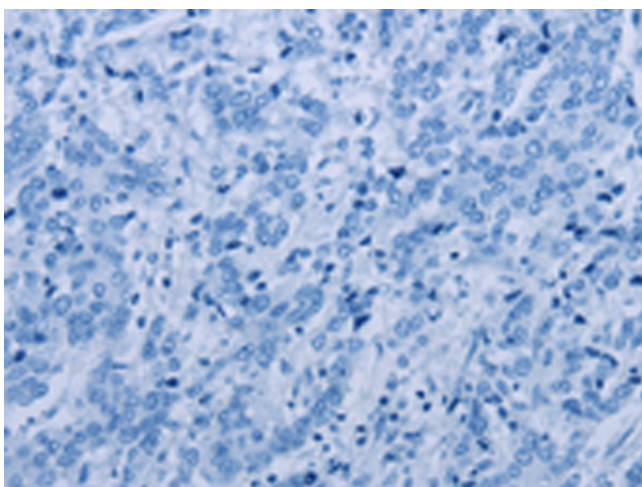
Immunohistochemistry of paraffin-embedded  
Human colon cancer tissue using TA322477  
(PPP1R13L Antibody) at dilution 1/30 (Original  
magnification: ×200)



Immunohistochemistry of paraffin-embedded Human colon cancer tissue using TA322477 (PPP1R13L Antibody) at dilution 1/30, treated with synthetic peptide. (Original magnification: ×200)



Immunohistochemistry of paraffin-embedded Human liver cancer tissue using TA322477 (PPP1R13L Antibody) at dilution 1/30 (Original magnification: ×200)



Immunohistochemistry of paraffin-embedded Human liver cancer tissue using TA322477 (PPP1R13L Antibody) at dilution 1/30, treated with synthetic peptide. (Original magnification: ×200)