

Product datasheet for **TA322472S**

Peroxiredoxin 3 (PRDX3) Rabbit Polyclonal Antibody

Product data:

Product Type:	Primary Antibodies
Applications:	IHC, WB
Recommended Dilution:	WB: 1000-5000 WB positive control: Hela and 293T cells IHC: 50-200 Positive control: Human liver cancer Predicted cell location: Cytoplasm
Reactivity:	Human
Host:	Rabbit
Isotype:	IgG
Clonality:	Polyclonal
Immunogen:	Synthetic peptide corresponding to a region derived from 242-256 amino acids of Human peroxiredoxin 3
Formulation:	PBS pH7.3, 0.05% NaN ₃ , 50% glycerol
Concentration:	lot specific
Purification:	Antigen affinity purification
Conjugation:	Unconjugated
Storage:	Store at -20°C as received.
Stability:	Stable for 12 months from date of receipt.
Predicted Protein Size:	28 kDa
Gene Name:	peroxiredoxin 3
Database Link:	NP_006784 Entrez Gene 10935 Human P30048



[View online »](#)

Background:

This gene encodes a protein with antioxidant function and is localized in the mitochondrion. This gene shows significant nucleotide sequence similarity to the gene coding for the C22 subunit of Salmonella typhimurium alkylhydroperoxide reductase. Expression of this gene product in E. coli deficient in the C22-subunit gene rescued resistance of the bacteria to alkylhydroperoxide. The human and mouse genes are highly conserved; and they map to the regions syntenic between mouse and human chromosomes. Sequence comparisons with recently cloned mammalian homologues suggest that these genes consist of a family that is responsible for regulation of cellular proliferation; differentiation; and antioxidant functions. Two transcript variants encoding two different isoforms have been found for this gene.

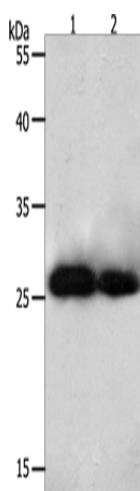
Synonyms:

AOP-1; AOP1; HBC189; MER5; PRO1748; prx-III; SP-22

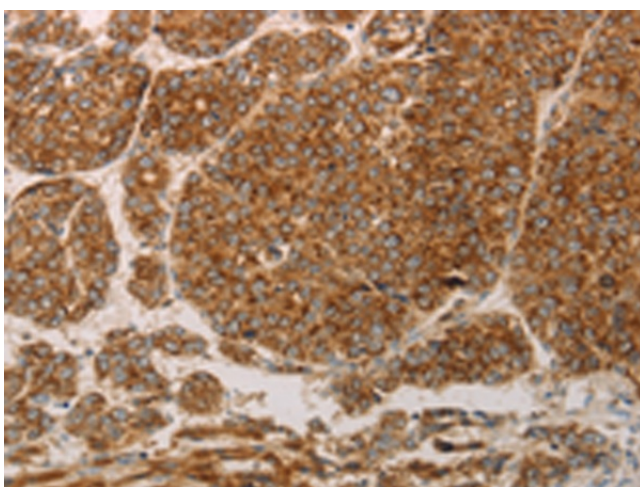
Protein Families:

Transcription Factors

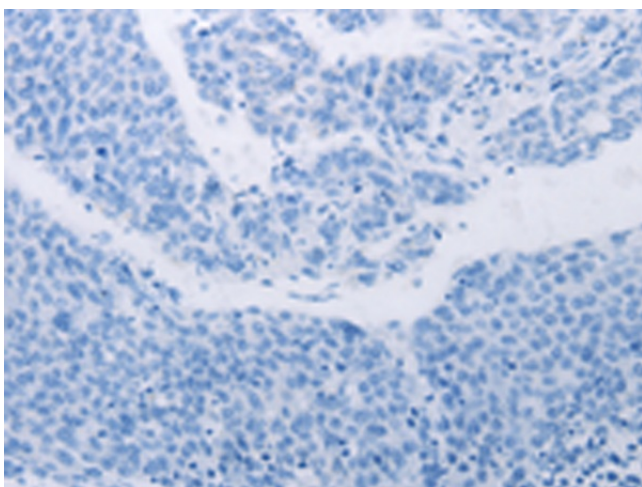
Product images:



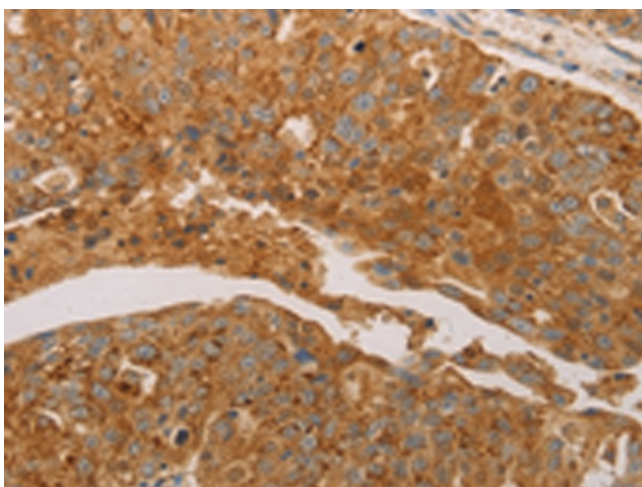
Gel: 10%SDS-PAGE
 Lysate: 40 µg
 Lane 1-2: HeLa cells
 293T cells
 Primary antibody: [TA322472] (PRDX3 Antibody)
 at dilution 1/800
 Secondary antibody: Goat anti rabbit IgG at
 1/8000 dilution
 Exposure time: 20 seconds



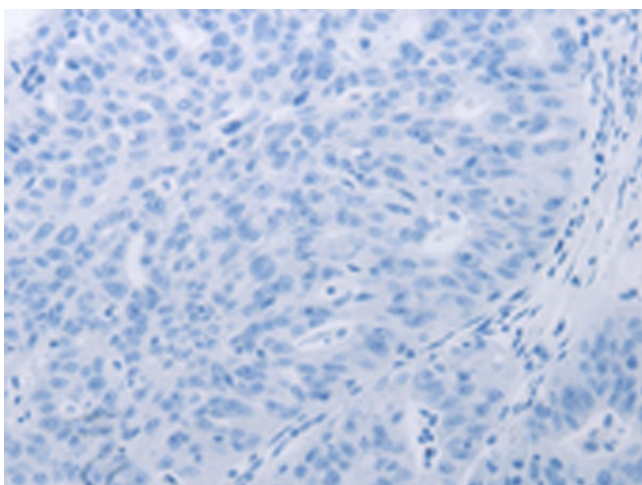
Immunohistochemistry of paraffin-embedded
 Human liver cancer tissue using [TA322472]
 (PRDX3 Antibody) at dilution 1/50 (Original
 magnification: ×200)



Immunohistochemistry of paraffin-embedded Human liver cancer tissue using [TA322472] (PRDX3 Antibody) at dilution 1/50, treated with synthetic peptide. (Original magnification: $\times 200$)



Immunohistochemistry of paraffin-embedded Human ovarian cancer tissue using [TA322472] (PRDX3 Antibody) at dilution 1/50 (Original magnification: $\times 200$)



Immunohistochemistry of paraffin-embedded Human ovarian cancer tissue using [TA322472] (PRDX3 Antibody) at dilution 1/50, treated with synthetic peptide. (Original magnification: $\times 200$)