

Product datasheet for **TA322468**

Urotensin II (UTS2) Rabbit Polyclonal Antibody

Product data:

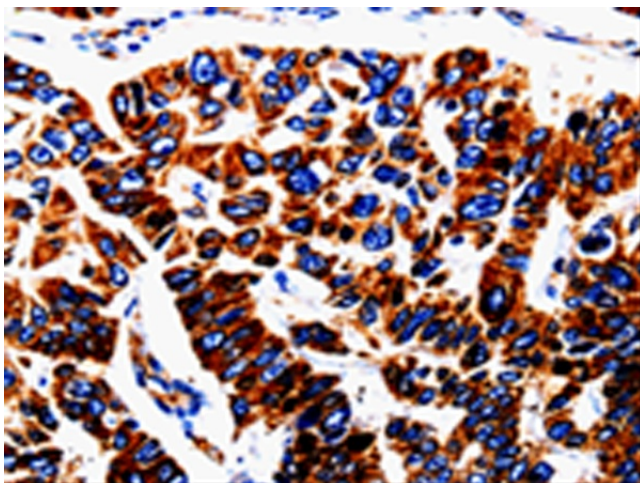
Product Type:	Primary Antibodies
Applications:	IHC
Recommended Dilution:	IHC: 50-200 Positive control: Human lung cancer Predicted cell location: Cytoplasm
Reactivity:	Human
Host:	Rabbit
Isotype:	IgG
Clonality:	Polyclonal
Immunogen:	Full length fusion protein
Formulation:	PBS pH7.3, 0.05% NaN ₃ , 50% glycerol
Concentration:	lot specific
Purification:	Antigen affinity purification
Conjugation:	Unconjugated
Storage:	Store at -20°C as received.
Stability:	Stable for 12 months from date of receipt.
Gene Name:	urotensin 2
Database Link:	NP_006777 Entrez Gene 10911 Human O95399
Background:	This gene encodes a mature peptide that is an active cyclic heptapeptide absolutely conserved from lamprey to human. The active peptide acts as a vasoconstrictor and is expressed only in brain tissue. Despite the gene family name similarity; this gene is not homologous to urocortin; a member of the sauvagine/corticotropin-releasing factor/urotensin I family. Most of the proprotein is cleaved to make the mature peptide. Transcript variants encoding different preproprotein isoforms have been described for this gene.
Synonyms:	PRO1068; U-II; UCN2; UII



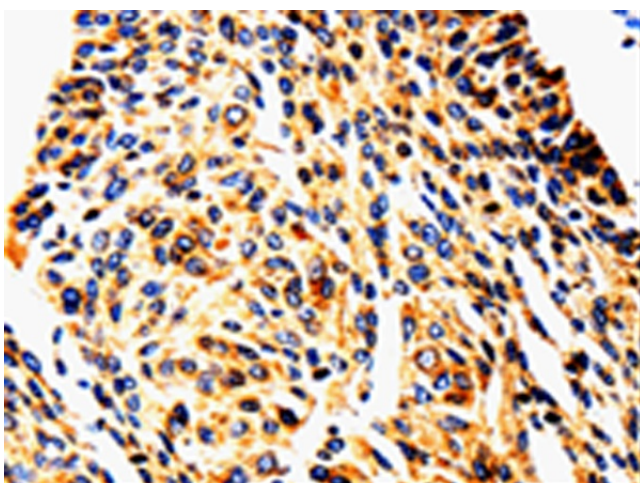
[View online »](#)

Protein Families: Secreted Protein

Product images:



Immunohistochemistry of paraffin-embedded Human lung cancer tissue using TA322468 (UTS2 Antibody) at dilution 1/50. (Original magnification: $\times 200$)



Immunohistochemistry of paraffin-embedded Human cervical cancer tissue using TA322468 (UTS2 Antibody) at dilution 1/50. (Original magnification: $\times 200$)