

Product datasheet for **TA322464S**

14-3-3 theta (YWHAQ) Rabbit Polyclonal Antibody

Product data:

| | |
|-------------------------|--|
| Product Type: | Primary Antibodies |
| Applications: | IHC, WB |
| Recommended Dilution: | WB: 500-2000 WB positive control: Mouse brain tissue, A549 cells and human lymphoma tissue, NIH/3T3 cells and human colon cancer tissue IHC: 25-100 Positive control: Human tonsil Predicted cell location: Cytoplasm, Nucleus |
| Reactivity: | Human, Mouse, Rat |
| Host: | Rabbit |
| Isotype: | IgG |
| Clonality: | Polyclonal |
| Immunogen: | Synthetic peptide corresponding to a region derived from 140-154 amino acids of Human tyrosine 3-monooxygenase/tryptophan 5-monooxygenase activation protein, theta polypeptide |
| Formulation: | PBS pH7.3, 0.05% NaN ₃ , 50% glycerol |
| Purification: | Antigen affinity purification |
| Conjugation: | Unconjugated |
| Storage: | Store at -20°C as received. |
| Stability: | Stable for 12 months from date of receipt. |
| Predicted Protein Size: | 28 kDa |
| Gene Name: | tyrosine 3-monooxygenase/tryptophan 5-monooxygenase activation protein theta |
| Database Link: | NP_006817 Entrez Gene 22630 Mouse Entrez Gene 25577 Rat Entrez Gene 10971 Human P27348 |



[View online »](#)

Background:

This gene product belongs to the 14-3-3 family of proteins which mediate signal transduction by binding to phosphoserine-containing proteins. This highly conserved protein family is found in both plants and mammals; and this protein is 99% identical to the mouse and rat orthologs. This gene is upregulated in patients with amyotrophic lateral sclerosis. It contains in its 5' UTR a 6 bp tandem repeat sequence which is polymorphic; however, there is no correlation between the repeat number and the disease.?

Synonyms:

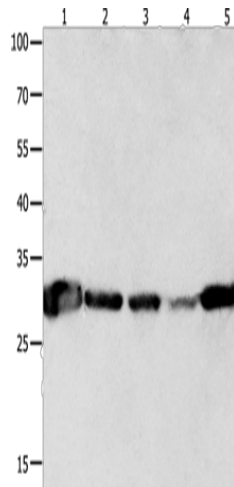
1C5; 14-3-3; HS1

Protein Families:

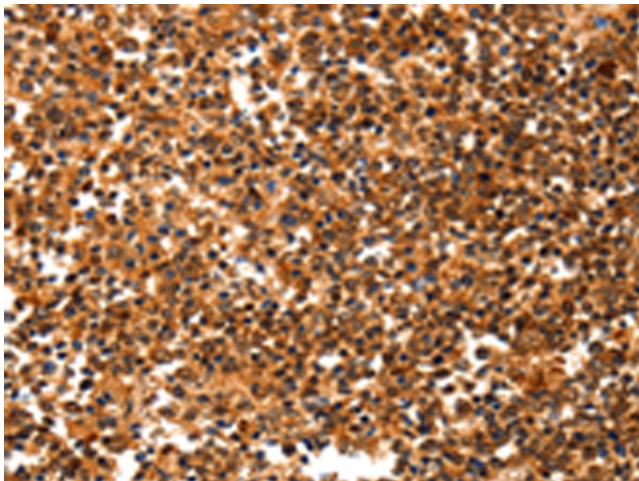
Druggable Genome

Protein Pathways:

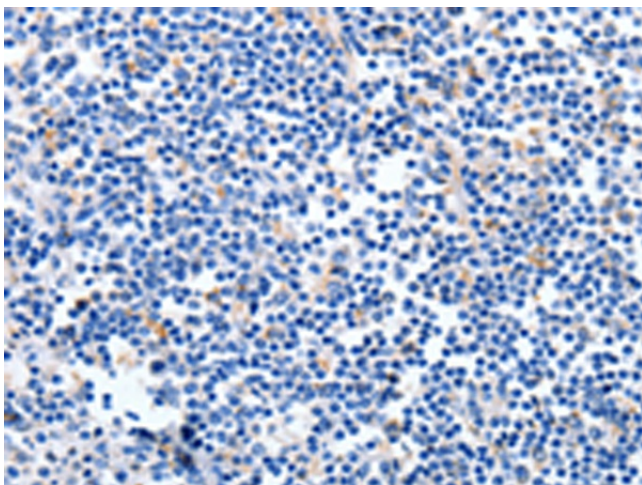
Cell cycle, Neurotrophin signaling pathway, Oocyte meiosis, Pathogenic Escherichia coli infection

Product images:


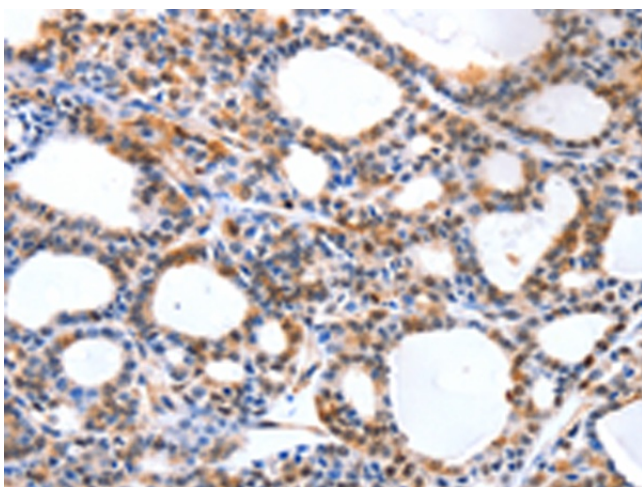
Gel: 10+12%SDS-PAGE
 Lysate: 40 µg
 Lane 1-5: Mouse brain tissue
 A549 cells
 human lymphoma tissue
 NIH/3T3 cells
 human colon cancer tissue
 Primary antibody: [TA322464] (YWHAQ Antibody) at dilution 1/300
 Secondary antibody: Goat anti rabbit IgG at 1/8000 dilution
 Exposure time: 5 seconds



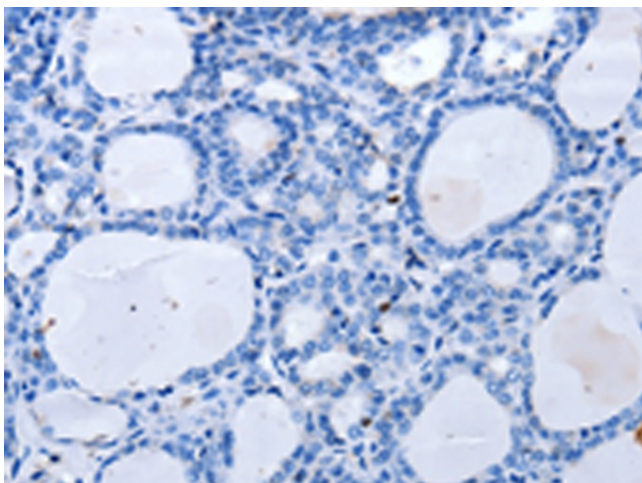
Immunohistochemistry of paraffin-embedded Human tonsil tissue using [TA322464] (YWHAQ Antibody) at dilution 1/20 (Original magnification: x200)



Immunohistochemistry of paraffin-embedded Human tonsil tissue using [TA322464] (YWHAQ Antibody) at dilution 1/20, treated with synthetic peptide. (Original magnification: $\times 200$)



Immunohistochemistry of paraffin-embedded Human thyroid cancer tissue using [TA322464] (YWHAQ Antibody) at dilution 1/20 (Original magnification: $\times 200$)



Immunohistochemistry of paraffin-embedded Human thyroid cancer tissue using [TA322464] (YWHAQ Antibody) at dilution 1/20, treated with synthetic peptide. (Original magnification: $\times 200$)