

## Product datasheet for **TA322464**

### 14-3-3 theta (YWHAQ) Rabbit Polyclonal Antibody

#### Product data:

Product Type:	Primary Antibodies
Applications:	IHC, WB
Recommended Dilution:	WB: 500-2000 WB positive control: Mouse brain tissue, A549 cells and human lymphoma tissue, NIH/3T3 cells and human colon cancer tissue IHC: 25-100 Positive control: Human tonsil Predicted cell location: Cytoplasm, Nucleus
Reactivity:	Human, Mouse, Rat
Host:	Rabbit
Isotype:	IgG
Clonality:	Polyclonal
Immunogen:	Synthetic peptide corresponding to a region derived from 140-154 amino acids of Human tyrosine 3-monooxygenase/tryptophan 5-monooxygenase activation protein, theta polypeptide
Formulation:	PBS pH7.3, 0.05% NaN <sub>3</sub> , 50% glycerol
Concentration:	lot specific
Purification:	Antigen affinity purification
Conjugation:	Unconjugated
Storage:	Store at -20°C as received.
Stability:	Stable for 12 months from date of receipt.
Predicted Protein Size:	28 kDa
Gene Name:	tyrosine 3-monooxygenase/tryptophan 5-monooxygenase activation protein theta
Database Link:	<a href="#">NP_006817</a> <a href="#">Entrez Gene 22630 Mouse</a> <a href="#">Entrez Gene 25577 Rat</a> <a href="#">Entrez Gene 10971 Human</a> <a href="#">P27348</a>



[View online »](#)

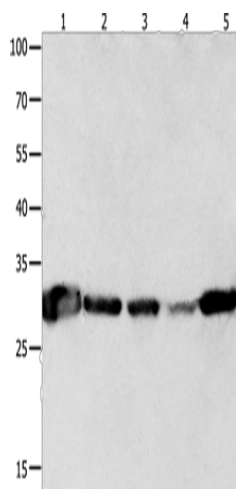
**Background:** This gene product belongs to the 14-3-3 family of proteins which mediate signal transduction by binding to phosphoserine-containing proteins. This highly conserved protein family is found in both plants and mammals; and this protein is 99% identical to the mouse and rat orthologs. This gene is upregulated in patients with amyotrophic lateral sclerosis. It contains in its 5' UTR a 6 bp tandem repeat sequence which is polymorphic; however; there is no correlation between the repeat number and the disease.?

**Synonyms:** 1C5; 14-3-3; HS1

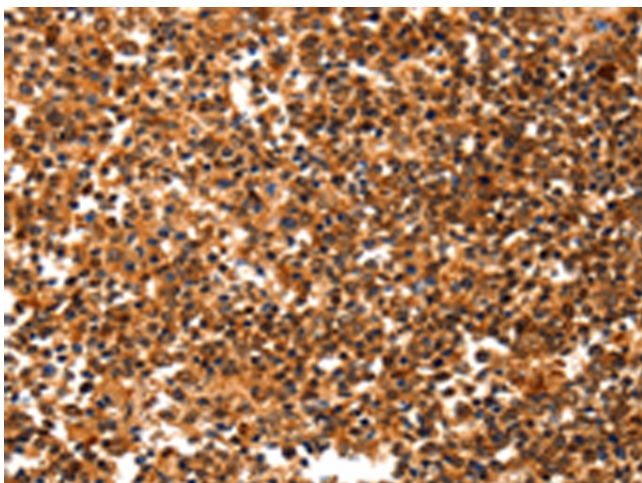
**Protein Families:** Druggable Genome

**Protein Pathways:** Cell cycle, Neurotrophin signaling pathway, Oocyte meiosis, Pathogenic Escherichia coli infection

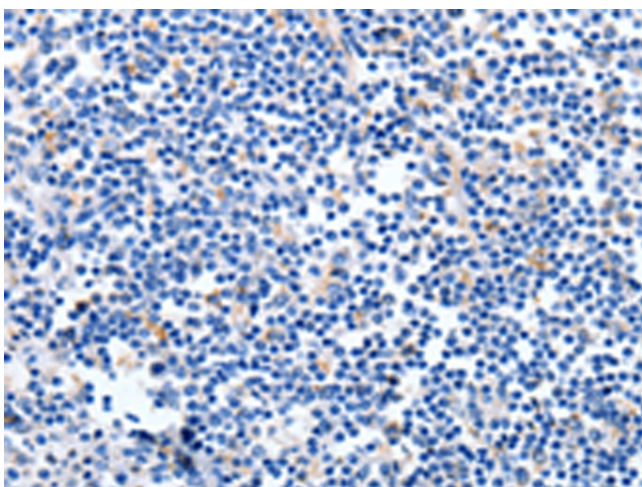
### Product images:



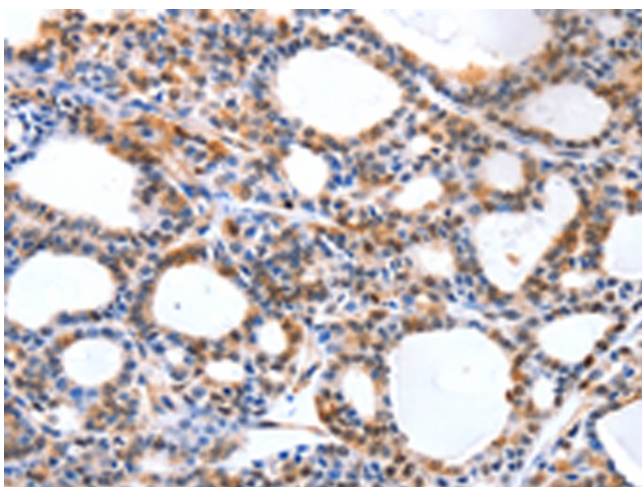
Gel: 10+12%SDS-PAGE  
Lysate: 40 µg  
Lane 1-5: Mouse brain tissue  
A549 cells  
human lymphoma tissue  
NIH/3T3 cells  
human colon cancer tissue  
Primary antibody: TA322464 (YWHAQ Antibody)  
at dilution 1/300  
Secondary antibody: Goat anti rabbit IgG at  
1/8000 dilution  
Exposure time: 5 seconds



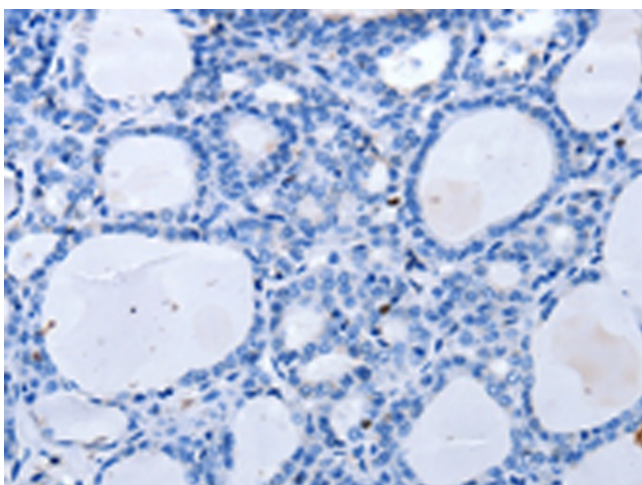
Immunohistochemistry of paraffin-embedded  
Human tonsil tissue using TA322464 (YWHAQ  
Antibody) at dilution 1/20 (Original magnification:  
×200)



Immunohistochemistry of paraffin-embedded Human tonsil tissue using TA322464 (YWHAQ Antibody) at dilution 1/20, treated with synthetic peptide. (Original magnification:  $\times 200$ )



Immunohistochemistry of paraffin-embedded Human thyroid cancer tissue using TA322464 (YWHAQ Antibody) at dilution 1/20 (Original magnification:  $\times 200$ )



Immunohistochemistry of paraffin-embedded Human thyroid cancer tissue using TA322464 (YWHAQ Antibody) at dilution 1/20, treated with synthetic peptide. (Original magnification:  $\times 200$ )