

Product datasheet for **TA322463S**

14-3-3 theta (YWHAQ) Rabbit Polyclonal Antibody

Product data:

| | |
|-------------------------|---|
| Product Type: | Primary Antibodies |
| Applications: | IHC, WB |
| Recommended Dilution: | WB: 1000-5000 WB positive control: Mouse brain tissue, A549 cells and human lymphoma tissue, hela cells IHC: 25-100 Positive control: Human ovarian cancer Predicted cell location: Cytoplasm |
| Reactivity: | Human, Mouse, Rat |
| Host: | Rabbit |
| Isotype: | IgG |
| Clonality: | Polyclonal |
| Immunogen: | Synthetic peptide corresponding to a region derived from 140-154 amino acids of Human tyrosine 3-monooxygenase/tryptophan 5-monooxygenase activation protein, theta polypeptide |
| Formulation: | PBS pH7.3, 0.05% NaN ₃ , 50% glycerol |
| Purification: | Antigen affinity purification |
| Conjugation: | Unconjugated |
| Storage: | Store at -20°C as received. |
| Stability: | Stable for 12 months from date of receipt. |
| Predicted Protein Size: | 28 kDa |
| Gene Name: | tyrosine 3-monooxygenase/tryptophan 5-monooxygenase activation protein theta |
| Database Link: | NP_006817 Entrez Gene 22630 Mouse Entrez Gene 25577 Rat Entrez Gene 10971 Human P27348 |



[View online »](#)

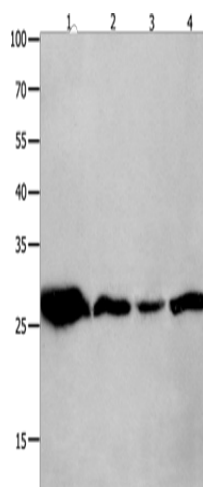
Background: This gene product belongs to the 14-3-3 family of proteins which mediate signal transduction by binding to phosphoserine-containing proteins. This highly conserved protein family is found in both plants and mammals; and this protein is 99% identical to the mouse and rat orthologs. This gene is upregulated in patients with amyotrophic lateral sclerosis. It contains in its 5' UTR a 6 bp tandem repeat sequence which is polymorphic; however, there is no correlation between the repeat number and the disease.?

Synonyms: 1C5; 14-3-3; HS1

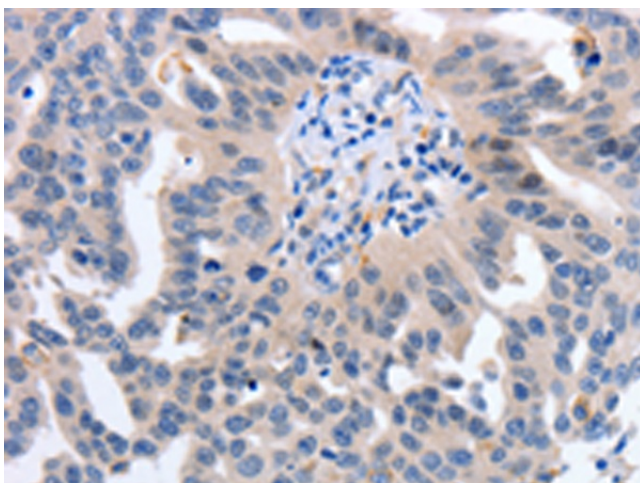
Protein Families: Druggable Genome

Protein Pathways: Cell cycle, Neurotrophin signaling pathway, Oocyte meiosis, Pathogenic Escherichia coli infection

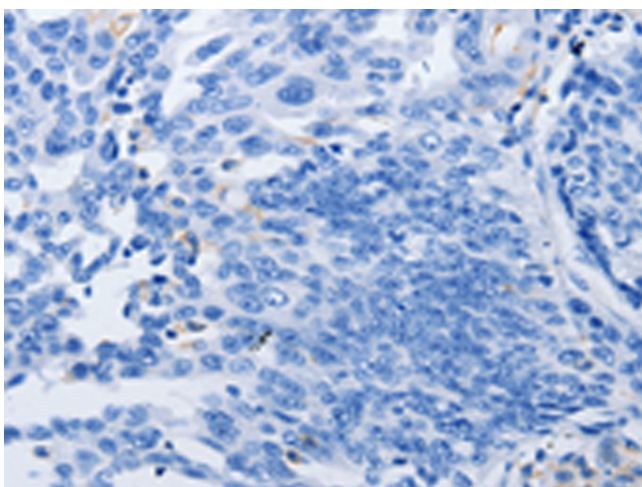
Product images:



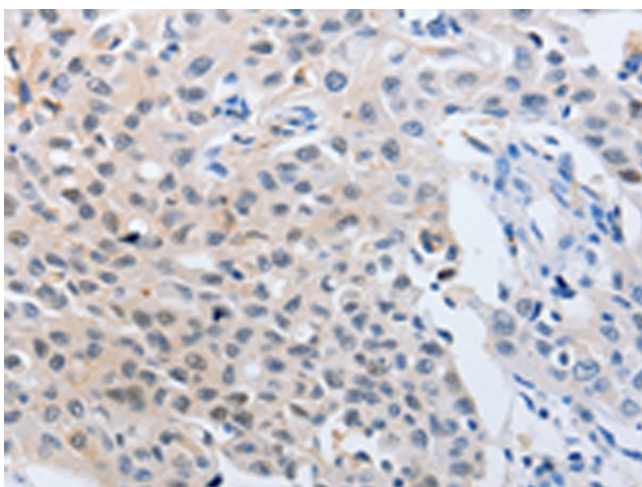
Gel: 10+12%SDS-PAGE
Lysate: 40 µg
Lane 1-4: Mouse brain tissue
A549 cells
human lymphoma tissue
hela cells
Primary antibody: [TA322463] (YWHAQ Antibody) at dilution 1/950
Secondary antibody: Goat anti rabbit IgG at 1/8000 dilution
Exposure time: 1 minute



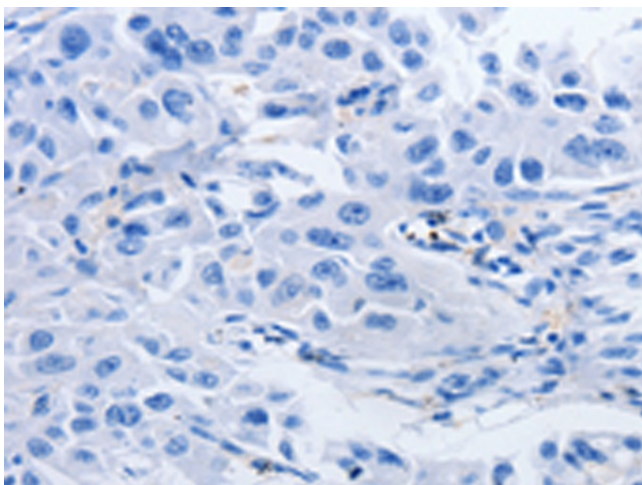
Immunohistochemistry of paraffin-embedded Human ovarian cancer tissue using [TA322463] (YWHAQ Antibody) at dilution 1/50 (Original magnification: x200)



Immunohistochemistry of paraffin-embedded Human ovarian cancer tissue using [TA322463] (YWHAQ Antibody) at dilution 1/50, treated with synthetic peptide. (Original magnification: x200)



Immunohistochemistry of paraffin-embedded Human lung cancer tissue using [TA322463] (YWHAQ Antibody) at dilution 1/50 (Original magnification: x200)



Immunohistochemistry of paraffin-embedded Human lung cancer tissue using [TA322463] (YWHAQ Antibody) at dilution 1/50, treated with synthetic peptide. (Original magnification: x200)