

## Product datasheet for **TA322461**

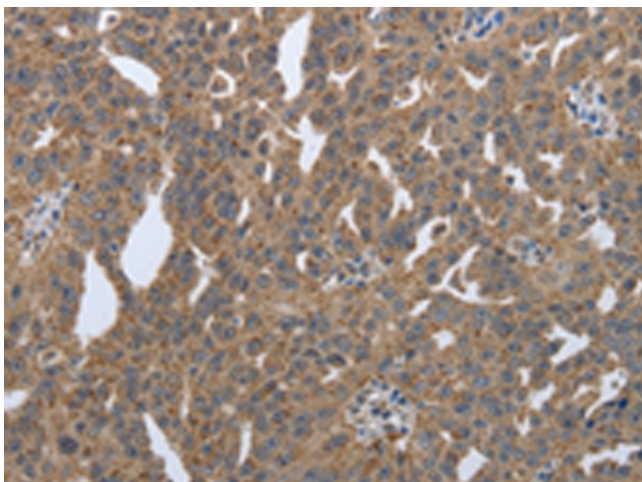
### **PDI (PDIA2) Rabbit Polyclonal Antibody**

#### **Product data:**

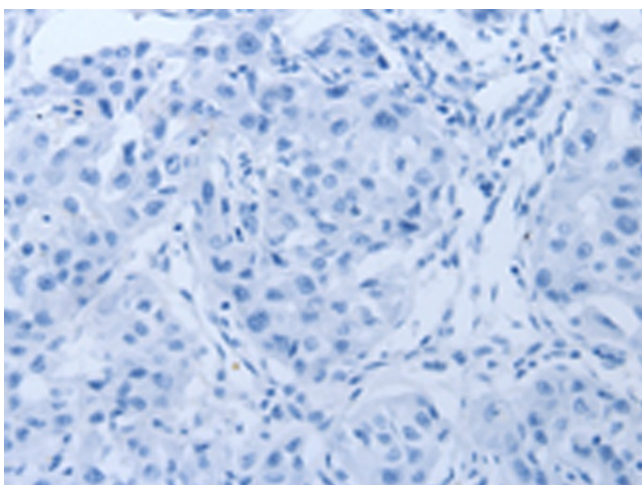
<b>Product Type:</b>	Primary Antibodies
<b>Applications:</b>	IHC
<b>Recommended Dilution:</b>	IHC: 50-200 Positive control: Human ovarian cancer Predicted cell location: Cytoplasm
<b>Reactivity:</b>	Human
<b>Host:</b>	Rabbit
<b>Isotype:</b>	IgG
<b>Clonality:</b>	Polyclonal
<b>Immunogen:</b>	Synthetic peptide corresponding to a region derived from 341-353 amino acids of Human protein disulfide isomerase family A, member 2
<b>Formulation:</b>	PBS pH7.3, 0.05% NaN <sub>3</sub> , 50% glycerol
<b>Concentration:</b>	lot specific
<b>Purification:</b>	Antigen affinity purification
<b>Conjugation:</b>	Unconjugated
<b>Storage:</b>	Store at -20°C as received.
<b>Stability:</b>	Stable for 12 months from date of receipt.
<b>Gene Name:</b>	protein disulfide isomerase family A member 2
<b>Database Link:</b>	<a href="#">NP_006840</a> <a href="#">Entrez Gene 64714 Human</a> <a href="#">Q13087</a>
<b>Background:</b>	Protein disulfide isomerases (EC 5.3.4.1); such as PDIP; are endoplasmic reticulum (ER) resident proteins that catalyze protein folding and thiol-disulfide interchange reactions
<b>Synonyms:</b>	PDA2; PDI; PDIP; PDIR
<b>Protein Families:</b>	Druggable Genome



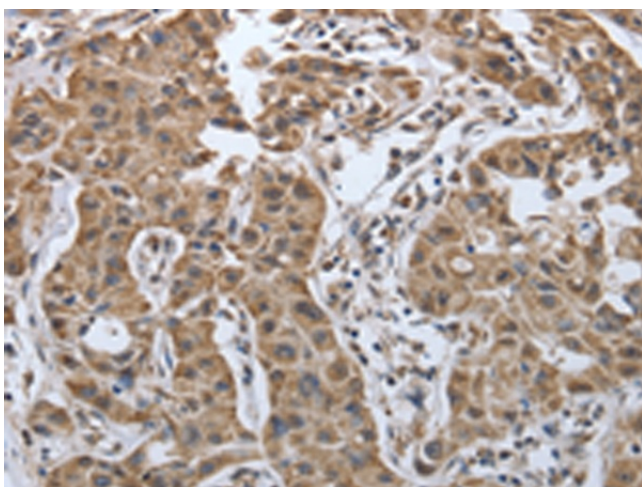
[View online »](#)

**Product images:**

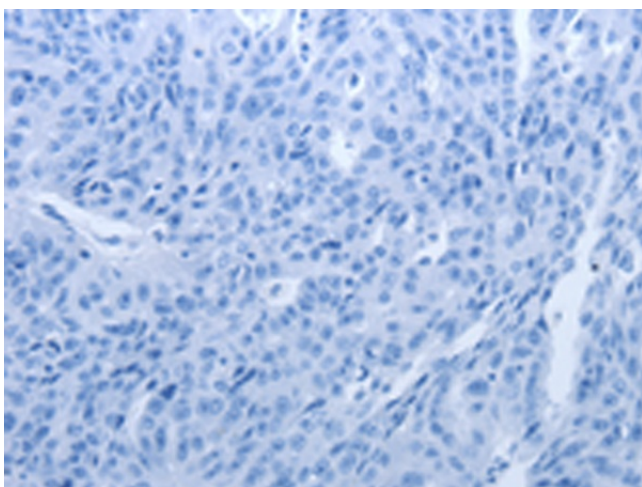
Immunohistochemistry of paraffin-embedded Human ovarian cancer tissue using TA322461 (PDIA2 Antibody) at dilution 1/50 (Original magnification: ×200)



Immunohistochemistry of paraffin-embedded Human ovarian cancer tissue using TA322461 (PDIA2 Antibody) at dilution 1/50, treated with synthetic peptide. (Original magnification: ×200)



Immunohistochemistry of paraffin-embedded Human lung cancer tissue using TA322461 (PDIA2 Antibody) at dilution 1/50 (Original magnification: ×200)



Immunohistochemistry of paraffin-embedded Human lung cancer tissue using TA322461 (PDIA2 Antibody) at dilution 1/50, treated with synthetic peptide. (Original magnification: ×200)