

Product datasheet for **TA322460S**

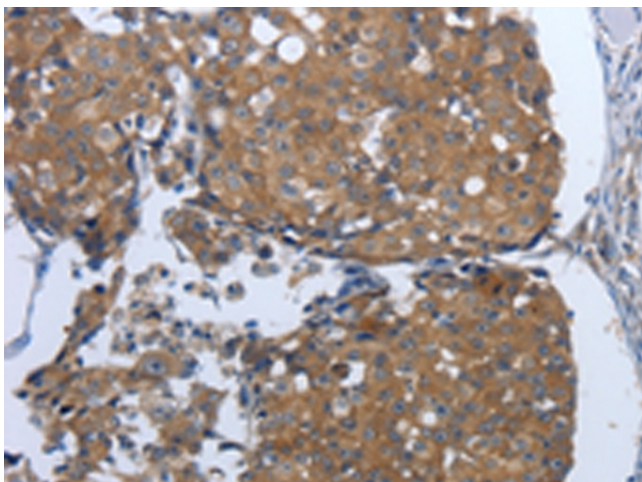
PDI (PDIA2) Rabbit Polyclonal Antibody

Product data:

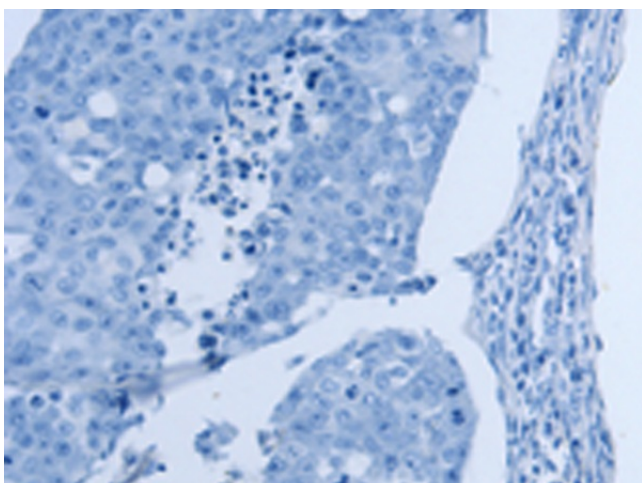
| | |
|------------------------------|---|
| Product Type: | Primary Antibodies |
| Applications: | IHC |
| Recommended Dilution: | IHC: 50-200 Positive control: Human breast cancer Predicted cell location: Cytoplasm |
| Reactivity: | Human |
| Host: | Rabbit |
| Isotype: | IgG |
| Clonality: | Polyclonal |
| Immunogen: | Synthetic peptide corresponding to a region derived from 341-353 amino acids of Human protein disulfide isomerase family A, member 2 |
| Formulation: | PBS pH7.3, 0.05% NaN ₃ , 50% glycerol |
| Purification: | Antigen affinity purification |
| Conjugation: | Unconjugated |
| Storage: | Store at -20°C as received. |
| Stability: | Stable for 12 months from date of receipt. |
| Gene Name: | protein disulfide isomerase family A member 2 |
| Database Link: | NP_006840 Entrez Gene 64714 Human Q13087 |
| Background: | Protein disulfide isomerases (EC 5.3.4.1); such as PDIP; are endoplasmic reticulum (ER) resident proteins that catalyze protein folding and thiol-disulfide interchange reactions |
| Synonyms: | PDA2; PDI; PDIP; PDIR |
| Protein Families: | Druggable Genome |



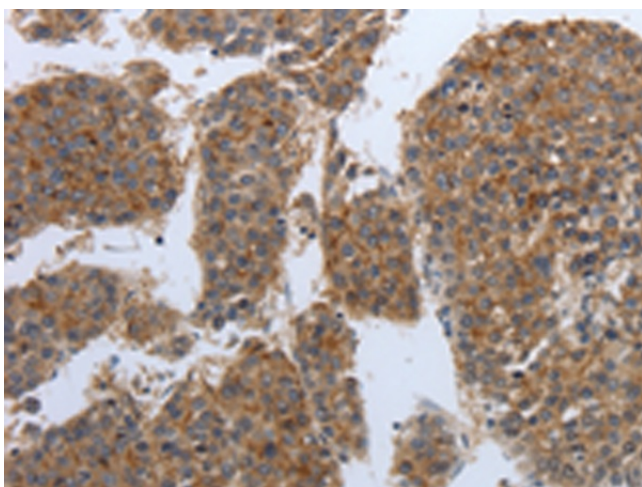
[View online »](#)

Product images:

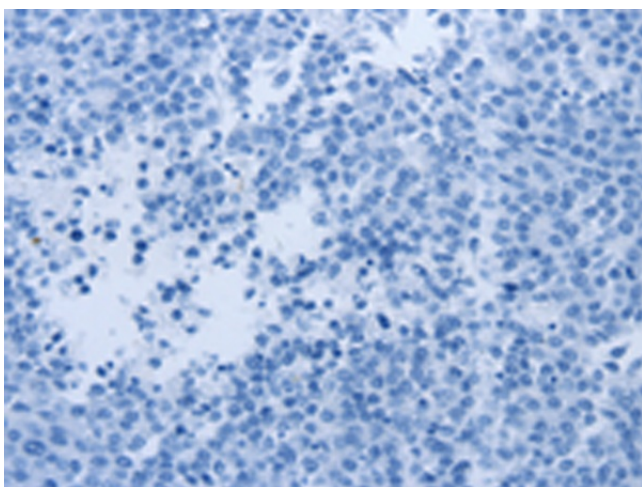
Immunohistochemistry of paraffin-embedded Human breast cancer tissue using [TA322460] (PDIA2 Antibody) at dilution 1/50 (Original magnification: $\times 200$)



Immunohistochemistry of paraffin-embedded Human breast cancer tissue using [TA322460] (PDIA2 Antibody) at dilution 1/50, treated with synthetic peptide. (Original magnification: $\times 200$)



Immunohistochemistry of paraffin-embedded Human liver cancer tissue using [TA322460] (PDIA2 Antibody) at dilution 1/50 (Original magnification: ×200)



Immunohistochemistry of paraffin-embedded Human liver cancer tissue using [TA322460] (PDIA2 Antibody) at dilution 1/50, treated with synthetic peptide. (Original magnification: ×200)