

Product datasheet for **TA322460**

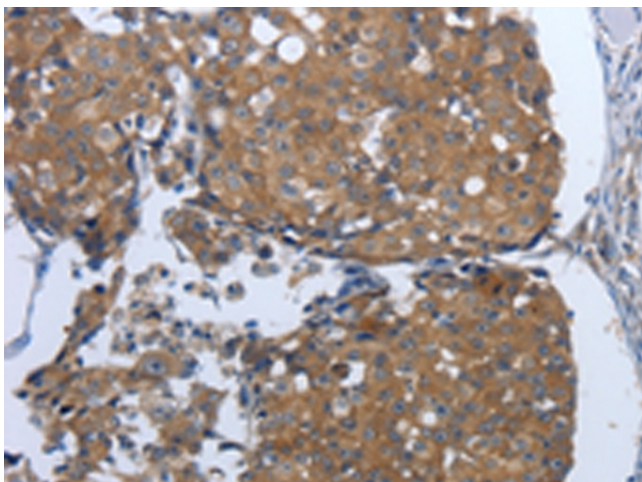
PDI (PDIA2) Rabbit Polyclonal Antibody

Product data:

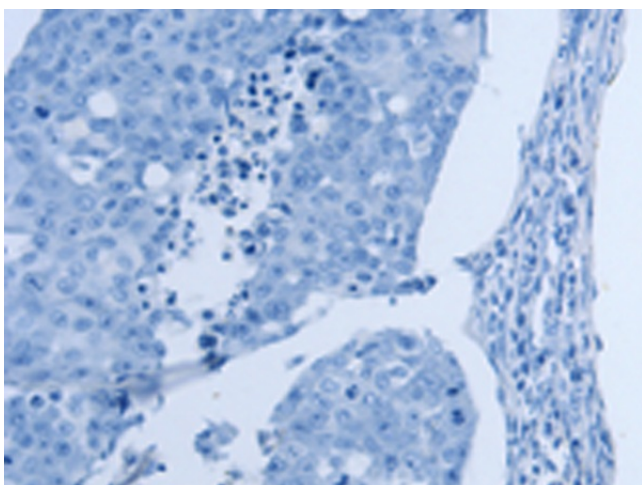
Product Type:	Primary Antibodies
Applications:	IHC
Recommended Dilution:	IHC: 50-200 Positive control: Human breast cancer Predicted cell location: Cytoplasm
Reactivity:	Human
Host:	Rabbit
Isotype:	IgG
Clonality:	Polyclonal
Immunogen:	Synthetic peptide corresponding to a region derived from 341-353 amino acids of Human protein disulfide isomerase family A, member 2
Formulation:	PBS pH7.3, 0.05% NaN ₃ , 50% glycerol
Concentration:	lot specific
Purification:	Antigen affinity purification
Conjugation:	Unconjugated
Storage:	Store at -20°C as received.
Stability:	Stable for 12 months from date of receipt.
Gene Name:	protein disulfide isomerase family A member 2
Database Link:	NP_006840 Entrez Gene 64714 Human Q13087
Background:	Protein disulfide isomerases (EC 5.3.4.1); such as PDIP; are endoplasmic reticulum (ER) resident proteins that catalyze protein folding and thiol-disulfide interchange reactions
Synonyms:	PDA2; PDI; PDIP; PDIR
Protein Families:	Druggable Genome



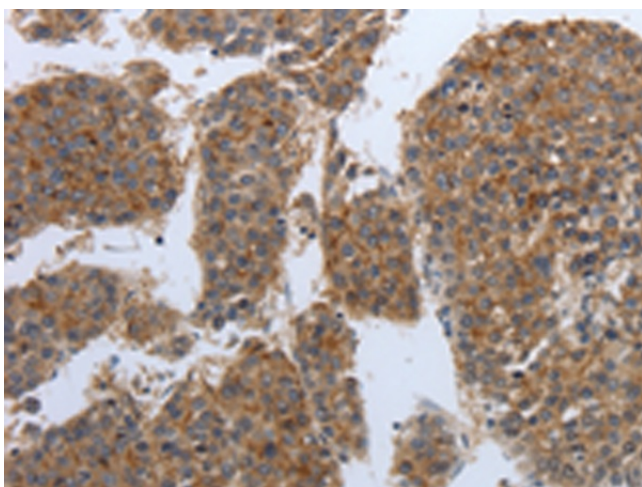
[View online »](#)

Product images:

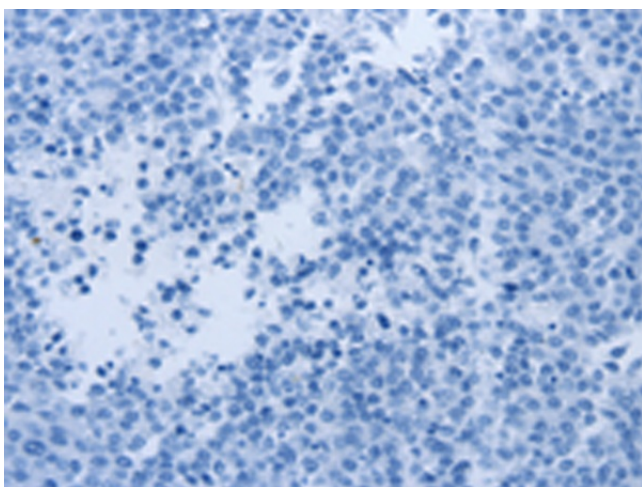
Immunohistochemistry of paraffin-embedded Human breast cancer tissue using TA322460 (PDIA2 Antibody) at dilution 1/50 (Original magnification: $\times 200$)



Immunohistochemistry of paraffin-embedded Human breast cancer tissue using TA322460 (PDIA2 Antibody) at dilution 1/50, treated with synthetic peptide. (Original magnification: $\times 200$)



Immunohistochemistry of paraffin-embedded Human liver cancer tissue using TA322460 (PDIA2 Antibody) at dilution 1/50 (Original magnification: ×200)



Immunohistochemistry of paraffin-embedded Human liver cancer tissue using TA322460 (PDIA2 Antibody) at dilution 1/50, treated with synthetic peptide. (Original magnification: ×200)