

Product datasheet for **TA322459S**

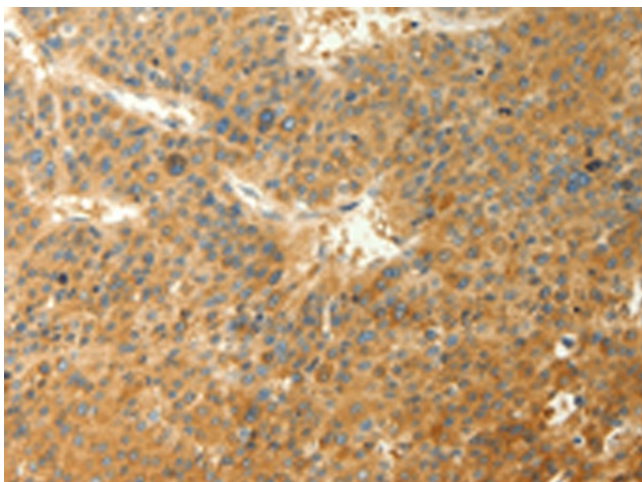
RAB35 Rabbit Polyclonal Antibody

Product data:

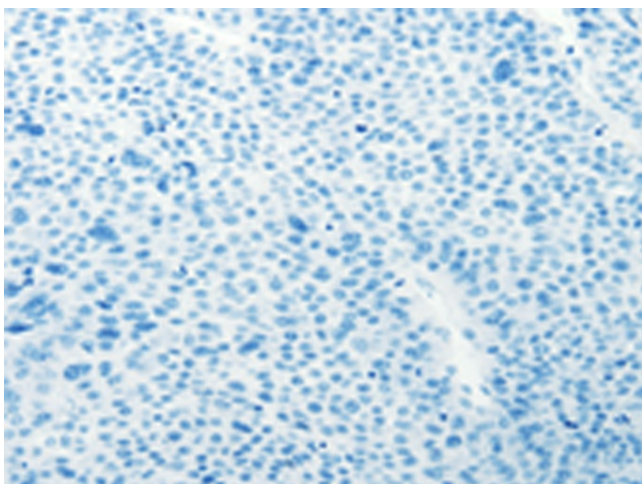
Product Type:	Primary Antibodies
Applications:	IHC
Recommended Dilution:	IHC: 50-200 Positive control: Human liver cancer Predicted cell location: Cytoplasm
Reactivity:	Human, Mouse, Rat
Host:	Rabbit
Isotype:	IgG
Clonality:	Polyclonal
Immunogen:	Synthetic peptide corresponding to a region derived from 121-135 amino acids of Human Ras-related protein Rab-35
Formulation:	PBS pH7.3, 0.05% NaN ₃ , 50% glycerol
Purification:	Antigen affinity purification
Conjugation:	Unconjugated
Storage:	Store at -20°C as received.
Stability:	Stable for 12 months from date of receipt.
Gene Name:	RAB35, member RAS oncogene family
Database Link:	NP_006852 Entrez Gene 77407 Mouse Entrez Gene 288700 Rat Entrez Gene 11021 Human Q15286
Background:	This gene encodes a small GTP-binding protein that belongs to the largest family within the Ras superfamily. Rab35 plays an important role in insulin-stimulated GLUT4 translocation in adipocytes. It is the target of TBC1D10A-C and that the intracellular accumulation of endosomal vesicles and impairs exosome secretion were occurred when inhibition of Rab35 function. The surface of oligodendroglia in a GTP-dependent manner was localized Rab35; it increases the density of vesicles; and may have a function in docking or tethering.
Synonyms:	H-ray; RAB1C; RAY
Protein Families:	Druggable Genome



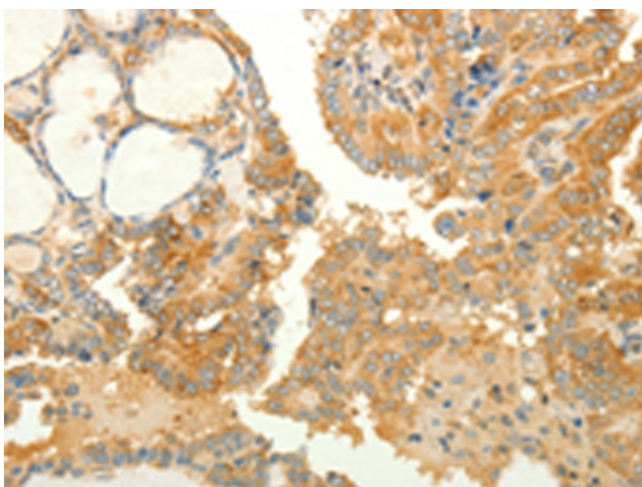
[View online »](#)

Product images:

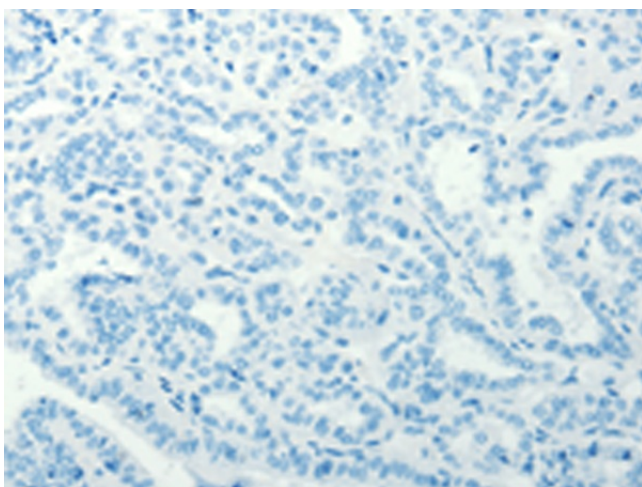
Immunohistochemistry of paraffin-embedded Human liver cancer tissue using [TA322459] (RAB35 Antibody) at dilution 1/40 (Original magnification: $\times 200$)



Immunohistochemistry of paraffin-embedded Human liver cancer tissue using [TA322459] (RAB35 Antibody) at dilution 1/40, treated with synthetic peptide. (Original magnification: $\times 200$)



Immunohistochemistry of paraffin-embedded Human thyroid cancer tissue using [TA322459] (RAB35 Antibody) at dilution 1/40 (Original magnification: $\times 200$)



Immunohistochemistry of paraffin-embedded Human thyroid cancer tissue using [TA322459] (RAB35 Antibody) at dilution 1/40, treated with synthetic peptide. (Original magnification: $\times 200$)