

## Product datasheet for **TA322458S**

### **RAB35 Rabbit Polyclonal Antibody**

#### **Product data:**

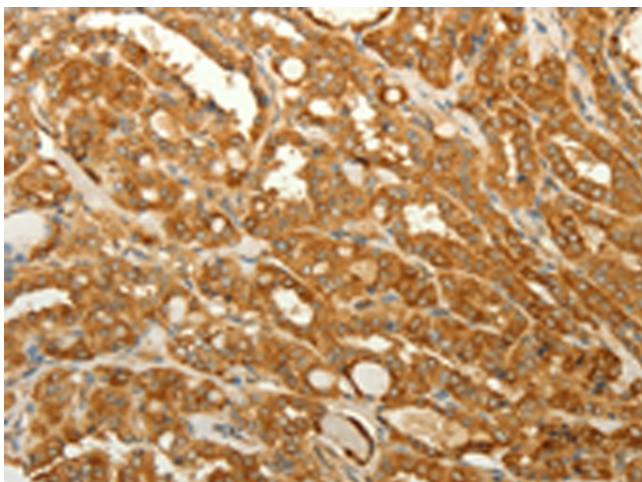
<b>Product Type:</b>	Primary Antibodies
<b>Applications:</b>	IHC
<b>Recommended Dilution:</b>	IHC: 50-200 Positive control: Human thyroid cancer Predicted cell location: Cytoplasm
<b>Reactivity:</b>	Human, Mouse, Rat
<b>Host:</b>	Rabbit
<b>Isotype:</b>	IgG
<b>Clonality:</b>	Polyclonal
<b>Immunogen:</b>	Synthetic peptide corresponding to a region derived from 121-135 amino acids of Human Ras-related protein Rab-35
<b>Formulation:</b>	PBS pH7.3, 0.05% NaN <sub>3</sub> , 50% glycerol
<b>Purification:</b>	Antigen affinity purification
<b>Conjugation:</b>	Unconjugated
<b>Storage:</b>	Store at -20°C as received.
<b>Stability:</b>	Stable for 12 months from date of receipt.
<b>Gene Name:</b>	RAB35, member RAS oncogene family
<b>Database Link:</b>	<a href="#">NP_006852</a> <a href="#">Entrez Gene 77407 Mouse</a> <a href="#">Entrez Gene 288700 Rat</a> <a href="#">Entrez Gene 11021 Human</a> <a href="#">Q15286</a>

**Background:** This gene encodes a small GTP-binding protein that belongs to the largest family within the Ras superfamily. Rab35 plays an important role in insulin-stimulated GLUT4 translocation in adipocytes. It is the target of TBC1D10A-C and that the intracellular accumulation of endosomal vesicles and impairs exosome secretion were occurred when inhibition of Rab35 function. The surface of oligodendroglia in a GTP-dependent manner was localized Rab35; it increases the density of vesicles; and may have a function in docking or tethering.

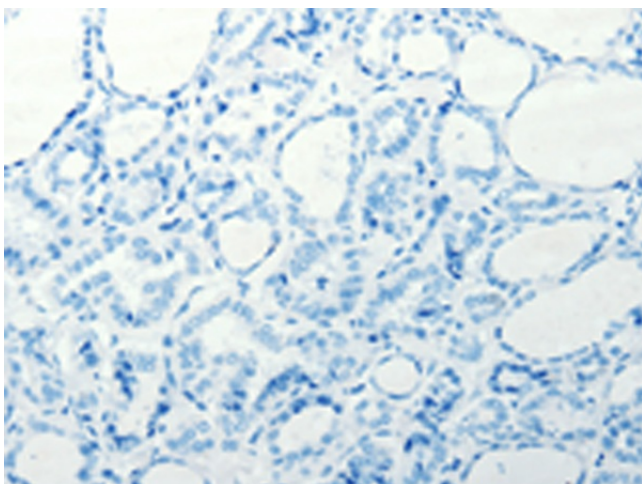
**Synonyms:** H-ray; RAB1C; RAY  
**Protein Families:** Druggable Genome



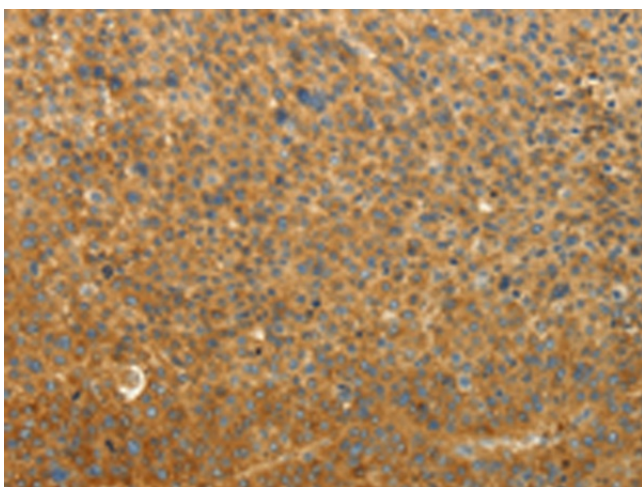
[View online »](#)

**Product images:**

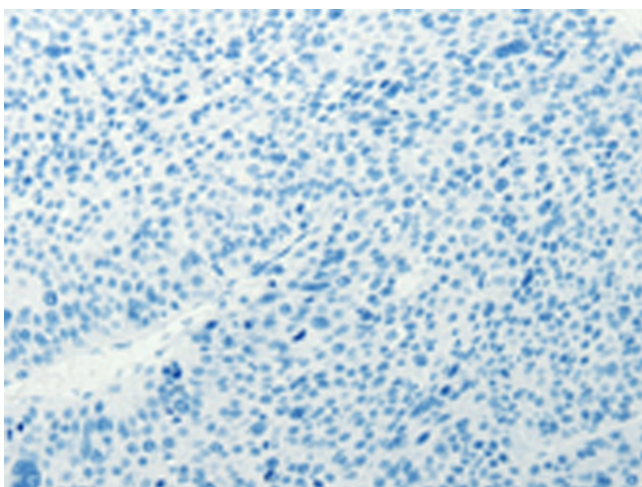
Immunohistochemistry of paraffin-embedded Human thyroid cancer tissue using [TA322458] (RAB35 Antibody) at dilution 1/50 (Original magnification:  $\times 200$ )



Immunohistochemistry of paraffin-embedded Human thyroid cancer tissue using [TA322458] (RAB35 Antibody) at dilution 1/50, treated with synthetic peptide. (Original magnification:  $\times 200$ )



Immunohistochemistry of paraffin-embedded Human liver cancer tissue using [TA322458] (RAB35 Antibody) at dilution 1/50 (Original magnification:  $\times 200$ )



Immunohistochemistry of paraffin-embedded Human liver cancer tissue using [TA322458] (RAB35 Antibody) at dilution 1/50, treated with synthetic peptide. (Original magnification:  $\times 200$ )