

## Product datasheet for **TA322458**

### **RAB35 Rabbit Polyclonal Antibody**

#### **Product data:**

Product Type:	Primary Antibodies
Applications:	IHC
Recommended Dilution:	IHC: 50-200 Positive control: Human thyroid cancer Predicted cell location: Cytoplasm
Reactivity:	Human, Mouse, Rat
Host:	Rabbit
Isotype:	IgG
Clonality:	Polyclonal
Immunogen:	Synthetic peptide corresponding to a region derived from 121-135 amino acids of Human Ras-related protein Rab-35
Formulation:	PBS pH7.3, 0.05% NaN <sub>3</sub> , 50% glycerol
Concentration:	lot specific
Purification:	Antigen affinity purification
Conjugation:	Unconjugated
Storage:	Store at -20°C as received.
Stability:	Stable for 12 months from date of receipt.
Gene Name:	RAB35, member RAS oncogene family
Database Link:	<a href="#">NP_006852</a> <a href="#">Entrez Gene 77407 MouseEntrez Gene 288700 RatEntrez Gene 11021 Human Q15286</a>

**Background:** This gene encodes a small GTP-binding protein that belongs to the largest family within the Ras superfamily. Rab35 plays an important role in insulin-stimulated GLUT4 translocation in adipocytes. It is the target of TBC1D10A-C and that the intracellular accumulation of endosomal vesicles and impairs exosome secretion were occurred when inhibition of Rab35 function. The surface of oligodendroglia in a GTP-dependent manner was localized Rab35; it increases the density of vesicles; and may have a function in docking or tethering.

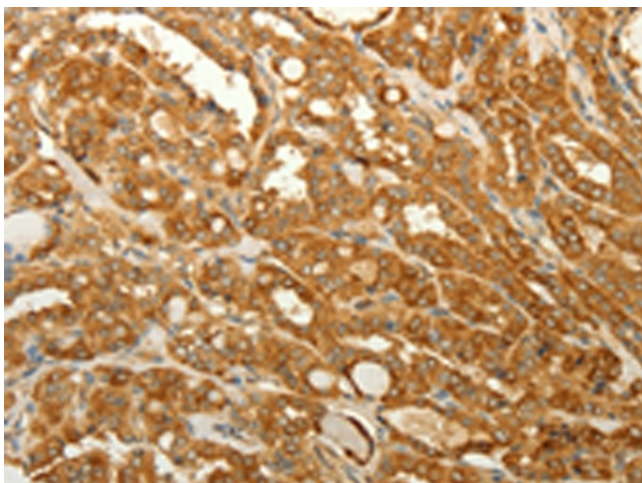
**Synonyms:** H-ray; RAB1C; RAY



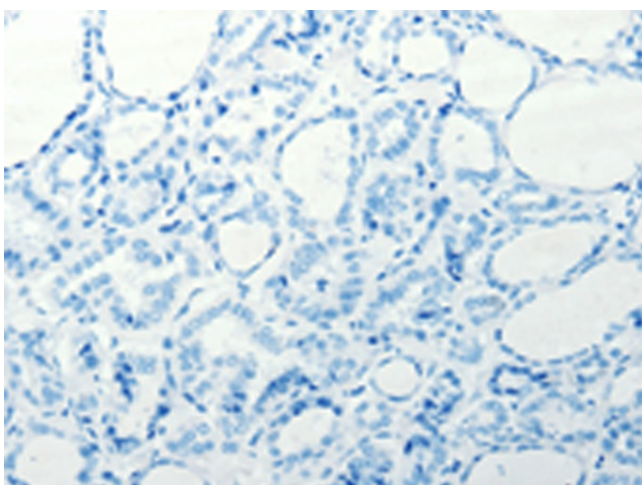
[View online »](#)

Protein Families: Druggable Genome

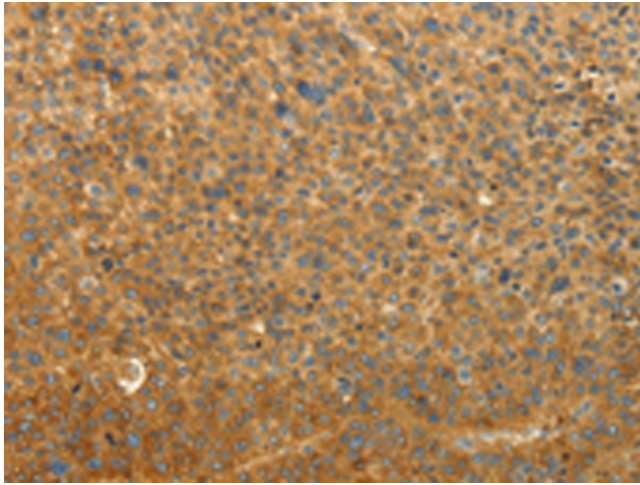
### Product images:



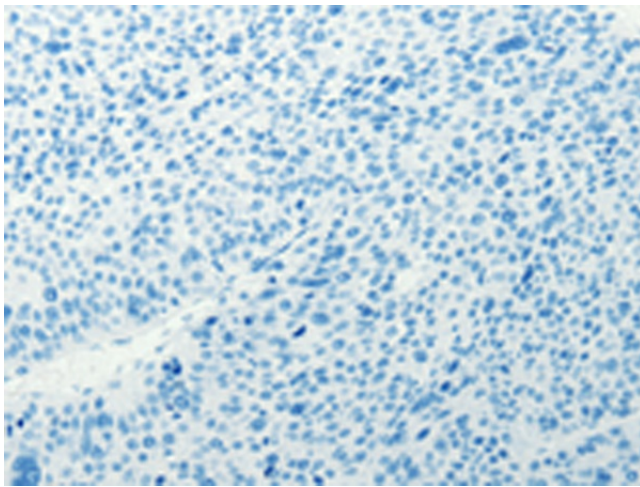
Immunohistochemistry of paraffin-embedded Human thyroid cancer tissue using TA322458 (RAB35 Antibody) at dilution 1/50 (Original magnification:  $\times 200$ )



Immunohistochemistry of paraffin-embedded Human thyroid cancer tissue using TA322458 (RAB35 Antibody) at dilution 1/50, treated with synthetic peptide. (Original magnification:  $\times 200$ )



Immunohistochemistry of paraffin-embedded Human liver cancer tissue using TA322458 (RAB35 Antibody) at dilution 1/50 (Original magnification:  $\times 200$ )



Immunohistochemistry of paraffin-embedded Human liver cancer tissue using TA322458 (RAB35 Antibody) at dilution 1/50, treated with synthetic peptide. (Original magnification:  $\times 200$ )