

## Product datasheet for **TA322457S**

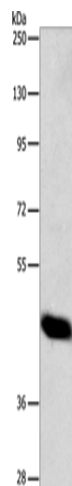
### Centaurin alpha 1 (ADAP1) Rabbit Polyclonal Antibody

#### Product data:

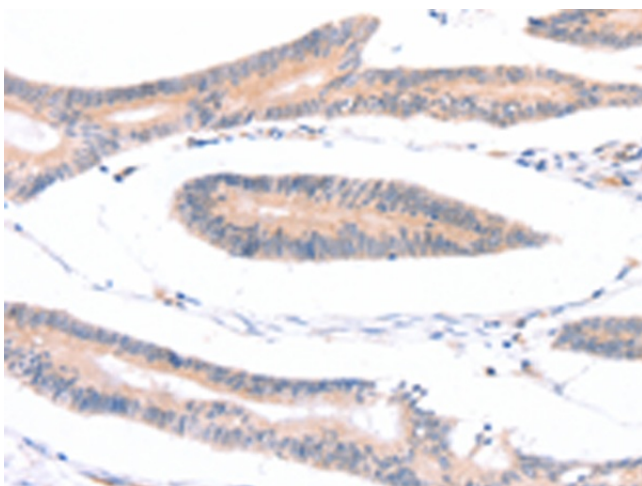
Product Type:	Primary Antibodies
Applications:	IHC, WB
Recommended Dilution:	WB: 200-1000 WB positive control: Mouse pancreas tissue IHC: 25-100 Positive control: Human colon cancer Predicted cell location: Cytoplasm
Reactivity:	Human, Mouse
Host:	Rabbit
Isotype:	IgG
Clonality:	Polyclonal
Immunogen:	Full length fusion protein
Formulation:	PBS pH7.3, 0.05% NaN <sub>3</sub> , 50% glycerol
Purification:	Antigen affinity purification
Conjugation:	Unconjugated
Storage:	Store at -20°C as received.
Stability:	Stable for 12 months from date of receipt.
Predicted Protein Size:	43 kDa
Gene Name:	ArfGAP with dual PH domains 1
Database Link:	<a href="#">NP_006860</a> <a href="#">Entrez Gene 231821 Mouse</a> <a href="#">Entrez Gene 11033 Human</a> <a href="#">O75689</a>
Background:	Arf-GAP with dual PH domain-containing protein 1 is a protein that in humans is encoded by the ADAP1 gene. GTPase-activating protein for the ADP ribosylation factor family. Binds phosphatidylinositol 3,4,5-trisphosphate (PtdInsP3) and inositol 1,3,4,5-tetrakisphosphate (InsP4).
Synonyms:	CENTA1; GCS1L; p42IP4
Protein Families:	Druggable Genome



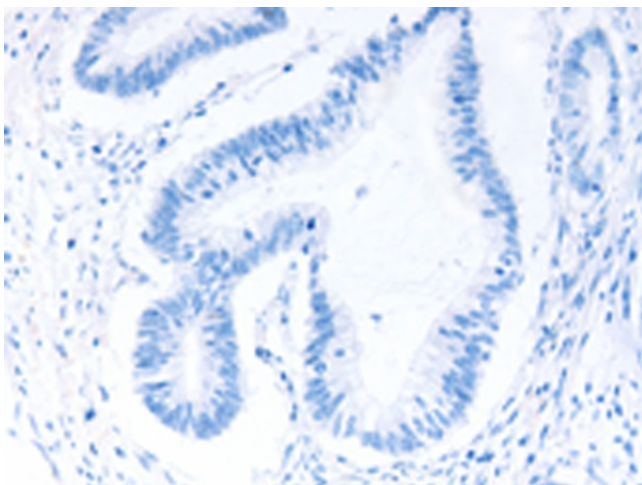
[View online »](#)

**Product images:**

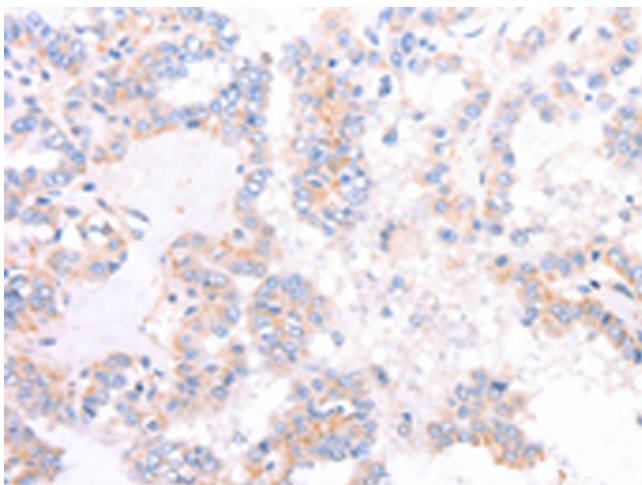
Gel: 10%SDS-PAGE  
Lysate: 40 µg  
Lane: Mouse pancreas tissue  
Primary antibody: [TA322457] (ADAP1 Antibody)  
at dilution 1/162.5  
Secondary antibody: Goat anti rabbit IgG at  
1/8000 dilution  
Exposure time: 20 seconds



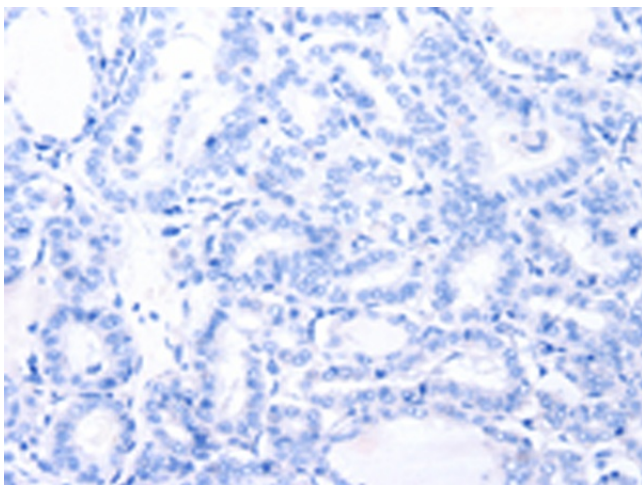
Immunohistochemistry of paraffin-embedded  
Human colon cancer tissue using [TA322457]  
(ADAP1 Antibody) at dilution 1/40 (Original  
magnification: ×200)



Immunohistochemistry of paraffin-embedded Human colon cancer tissue using [TA322457] (ADAP1 Antibody) at dilution 1/40, treated with fusion protein. (Original magnification:  $\times 200$ )



Immunohistochemistry of paraffin-embedded Human thyroid cancer tissue using [TA322457] (ADAP1 Antibody) at dilution 1/40 (Original magnification:  $\times 200$ )



Immunohistochemistry of paraffin-embedded Human thyroid cancer tissue using [TA322457] (ADAP1 Antibody) at dilution 1/40, treated with fusion protein. (Original magnification:  $\times 200$ )