

## Product datasheet for **TA322457**

### **Centaurin alpha 1 (ADAP1) Rabbit Polyclonal Antibody**

#### **Product data:**

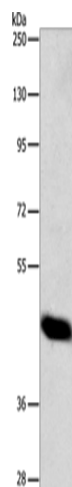
<b>Product Type:</b>	Primary Antibodies
<b>Applications:</b>	IHC, WB
<b>Recommended Dilution:</b>	WB: 200-1000 WB positive control: Mouse pancreas tissue IHC: 25-100 Positive control: Human colon cancer Predicted cell location: Cytoplasm
<b>Reactivity:</b>	Human, Mouse
<b>Host:</b>	Rabbit
<b>Isotype:</b>	IgG
<b>Clonality:</b>	Polyclonal
<b>Immunogen:</b>	Full length fusion protein
<b>Formulation:</b>	PBS pH7.3, 0.05% NaN <sub>3</sub> , 50% glycerol
<b>Concentration:</b>	lot specific
<b>Purification:</b>	Antigen affinity purification
<b>Conjugation:</b>	Unconjugated
<b>Storage:</b>	Store at -20°C as received.
<b>Stability:</b>	Stable for 12 months from date of receipt.
<b>Predicted Protein Size:</b>	43 kDa
<b>Gene Name:</b>	ArfGAP with dual PH domains 1
<b>Database Link:</b>	<a href="#">NP_006860</a> <a href="#">Entrez Gene 231821 Mouse</a> <a href="#">Entrez Gene 11033 Human</a> <a href="#">O75689</a>
<b>Background:</b>	Arf-GAP with dual PH domain-containing protein 1 is a protein that in humans is encoded by the ADAP1 gene. GTPase-activating protein for the ADP ribosylation factor family. Binds phosphatidylinositol 3,4,5-trisphosphate (PtdInsP3) and inositol 1,3,4,5-tetrakisphosphate (InsP4).
<b>Synonyms:</b>	CENTA1; GCS1L; p42IP4



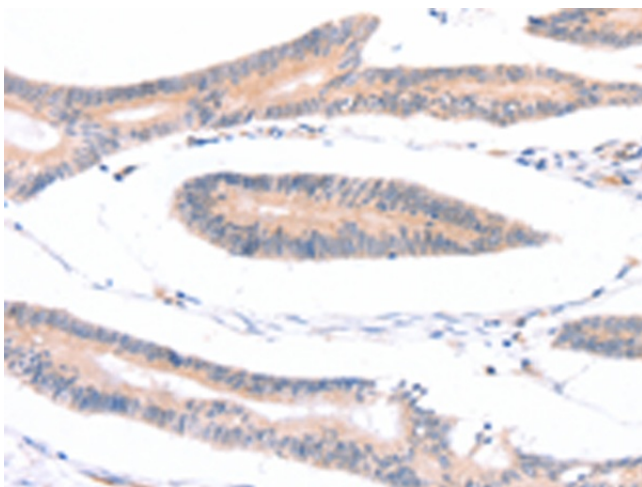
[View online »](#)

Protein Families: Druggable Genome

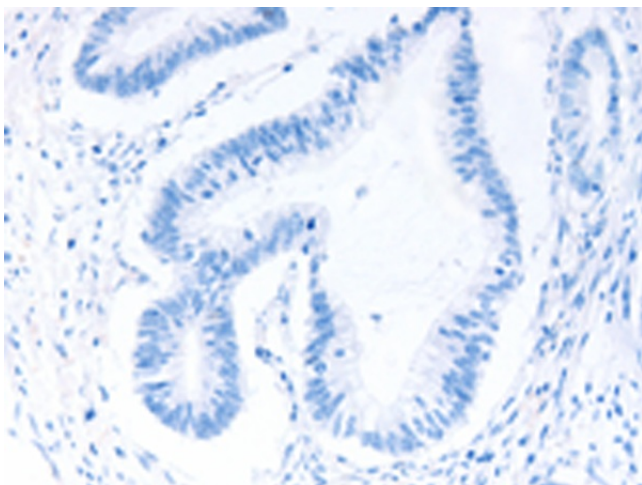
### Product images:



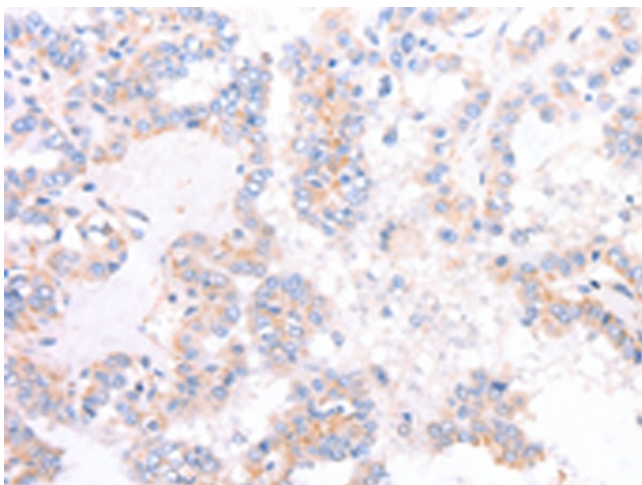
Gel: 10%SDS-PAGE  
Lysate: 40 µg  
Lane: Mouse pancreas tissue  
Primary antibody: TA322457 (ADAP1 Antibody) at dilution 1/162.5  
Secondary antibody: Goat anti rabbit IgG at 1/8000 dilution  
Exposure time: 20 seconds



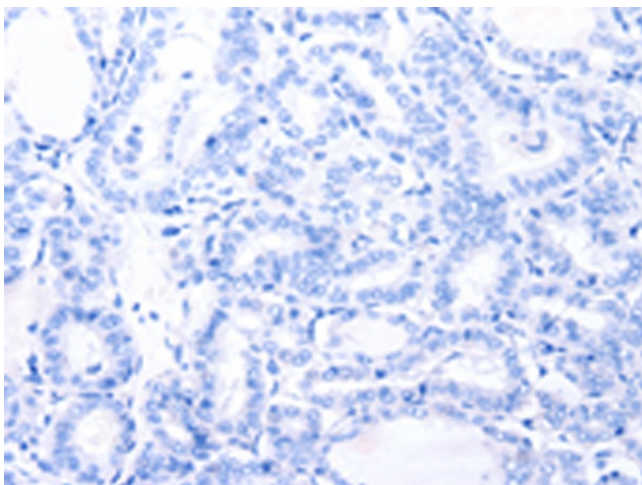
Immunohistochemistry of paraffin-embedded Human colon cancer tissue using TA322457 (ADAP1 Antibody) at dilution 1/40 (Original magnification: ×200)



Immunohistochemistry of paraffin-embedded Human colon cancer tissue using TA322457 (ADAP1 Antibody) at dilution 1/40, treated with fusion protein. (Original magnification: ×200)



Immunohistochemistry of paraffin-embedded Human thyroid cancer tissue using TA322457 (ADAP1 Antibody) at dilution 1/40 (Original magnification: ×200)



Immunohistochemistry of paraffin-embedded Human thyroid cancer tissue using TA322457 (ADAP1 Antibody) at dilution 1/40, treated with fusion protein. (Original magnification: ×200)