

## Product datasheet for **TA322453**

### Synapsin I (SYN1) Rabbit Polyclonal Antibody

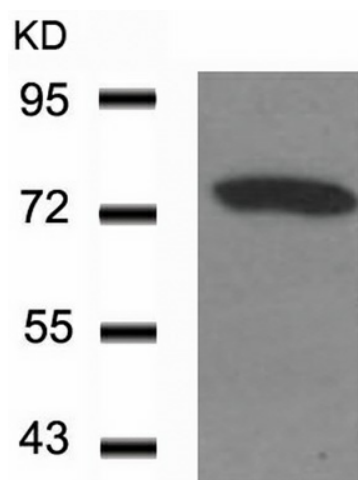
#### Product data:

Product Type:	Primary Antibodies
Applications:	IF, WB
Recommended Dilution:	WB: 1:500-1000, IF: 1:100-200
Reactivity:	Human, Mouse, Rat
Modifications:	Phospho-specific
Host:	Rabbit
Isotype:	IgG
Clonality:	Polyclonal
Immunogen:	Peptide sequence around phosphorylation site of serine 9 (R-L-S(p)-D-S) derived from Human SYN1/synapsin.
Formulation:	PBS pH7.3, 0.05% NaN <sub>3</sub> , 50% glycerol
Concentration:	lot specific
Purification:	Antigen affinity purification
Conjugation:	Unconjugated
Storage:	Store at -20°C as received.
Stability:	Stable for 12 months from date of receipt.
Predicted Protein Size:	74 kDa
Gene Name:	synapsin I
Database Link:	<a href="#">NP_008881</a> <a href="#">Entrez Gene 20964 Mouse</a> <a href="#">Entrez Gene 24949 Rat</a> <a href="#">Entrez Gene 6853 Human</a> <a href="#">P17600</a>
Background:	Neuronal phosphoprotein that coats synaptic vesicles, binds to the cytoskeleton, and is believed to function in the regulation of neurotransmitter release. The complex formed with NOS1 and CAPON proteins is necessary for specific nitric-oxid functions at a presynaptic level
Synonyms:	SYN1a; SYN1b; SYNI

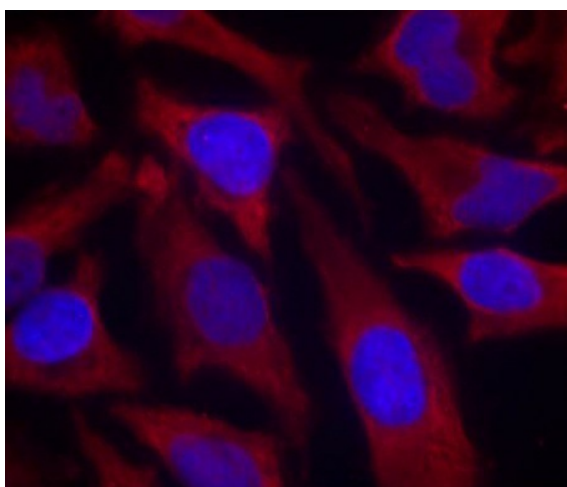


[View online »](#)

## Product images:



Predicted band size: 74 kDa. Positive control: Mouse Brain tissue lysate. Recommended dilution: 1/ 500-1000. (Gel: 8%SDS-PAGE Lane 1: Mouse Brain tissue Lysate: 30 ug Primary antibody: 1/500 dilution Secondary antibody: Goat anti Rabbit IgG - H&L (HRP) at 1/10000 dilution Exposure time: 1 minute)



Predicted cell location: Cell junction:synapse; Golgi apparatus. Positive control: HeLa cells. Recommended dilution: 1/ 100-200.The image is immunofluorescence of methanol-fixed HeLa cells using SYN1 (Phospho-Ser9) antibody at dilution 1/100. (Original magnification:×200)