

Product datasheet for **TA322452**

Sumo 2 (SUMO2) Rabbit Polyclonal Antibody

Product data:

Product Type:	Primary Antibodies
Applications:	IHC, WB
Recommended Dilution:	WB: 500-2000 WB positive control: Mouse kidney tissue lysate IHC: 50-200 Positive control: Human thyroid cancer Predicted cell location: Nucleus
Reactivity:	Human, Mouse, Rat
Host:	Rabbit
Isotype:	IgG
Clonality:	Polyclonal
Immunogen:	Synthetic peptide corresponding to a region derived from 71-85 amino acids of human SMT3 suppressor of mif two 3 homolog 2 (<i>S. cerevisiae</i>)
Formulation:	PBS pH7.3, 0.05% NaN ₃ , 50% glycerol
Concentration:	lot specific
Purification:	Antigen affinity purification
Conjugation:	Unconjugated
Storage:	Store at -20°C as received.
Stability:	Stable for 12 months from date of receipt.
Predicted Protein Size:	12 kDa
Gene Name:	small ubiquitin-like modifier 2
Database Link:	NP_008868 Entrez Gene 170930 Mouse Entrez Gene 690244 Rat Entrez Gene 6613 Human P61956



[View online »](#)

Background:

This gene encodes a protein that is a member of the SUMO (small ubiquitin-like modifier) protein family. It functions in a manner similar to ubiquitin in that it is bound to target proteins as part of a post-translational modification system. However, unlike ubiquitin which targets proteins for degradation, this protein is involved in a variety of cellular processes, such as nuclear transport, transcriptional regulation, apoptosis, and protein stability. It is not active until the last two amino acids of the carboxy-terminus have been cleaved off. Numerous pseudogenes have been reported for this gene. Alternate transcriptional splice variants, encoding different isoforms, have been characterized.

Synonyms:

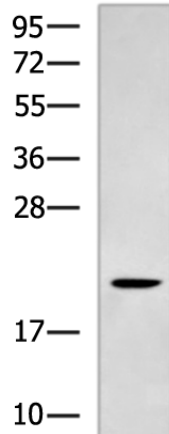
HSMT3; Smt3A; SMT3B; SMT3H2; SUMO3

Protein Families:

Druggable Genome

Product images:

kDa



Gel: 8%SDS-PAGE

Lysate: 40 µg

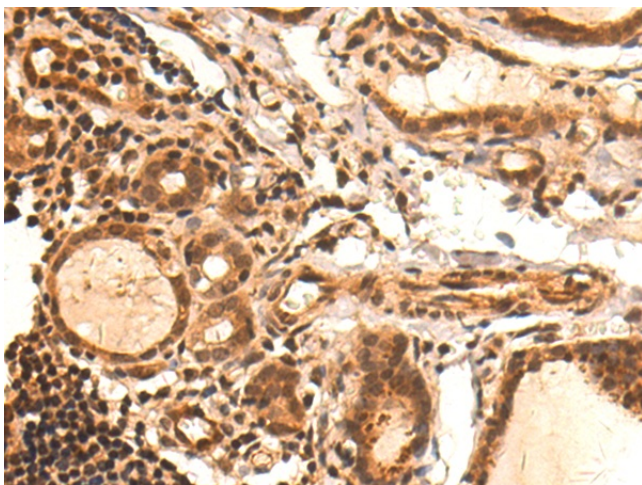
Lane: Mouse kidney tissue lysate

Primary antibody: TA322452

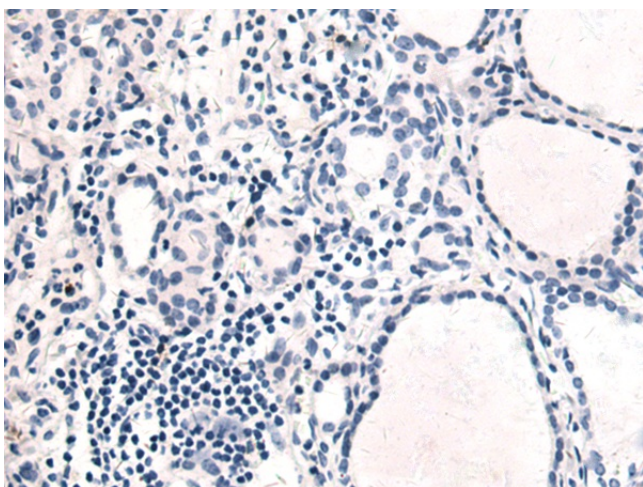
(SUMO2/SUMO3/SUMO4 Antibody) at dilution 1/1000

Secondary antibody: Goat anti rabbit IgG at 1/5000 dilution

Exposure time: 1 minute



Immunohistochemistry of paraffin-embedded Human thyroid cancer tissue using TA322452 (SUMO2/SUMO3/SUMO4 Antibody) at dilution 1/50 (Original magnification: ×200)



Immunohistochemistry of paraffin-embedded Human thyroid cancer tissue using TA322452 (SUMO2/SUMO3/SUMO4 Antibody) at dilution 1/50, treated with synthetic peptide. (Original magnification: $\times 200$)