

## Product datasheet for **TA322450**

### STMN2 Rabbit Polyclonal Antibody

#### Product data:

Product Type:	Primary Antibodies
Applications:	IHC, WB
Recommended Dilution:	WB: 500-2000 WB positive control: Human liver cancer tissue IHC: 50-200 Positive control: Human thyroid cancer Predicted cell location: Cytoplasm
Reactivity:	Human, Mouse
Host:	Rabbit
Isotype:	IgG
Clonality:	Polyclonal
Immunogen:	Synthetic peptide corresponding to a region derived from 106-118 amino acids of Human stathmin-like 2
Formulation:	PBS pH7.3, 0.05% NaN <sub>3</sub> , 50% glycerol
Concentration:	lot specific
Purification:	Antigen affinity purification
Conjugation:	Unconjugated
Storage:	Store at -20°C as received.
Stability:	Stable for 12 months from date of receipt.
Predicted Protein Size:	21 kDa
Gene Name:	stathmin 2
Database Link:	<a href="#">NP_008960</a> <a href="#">Entrez Gene 20257 Mouse</a> <a href="#">Entrez Gene 11075 Human</a> <a href="#">Q93045</a>



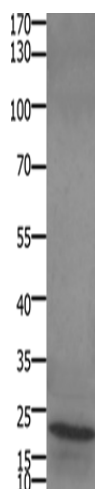
[View online »](#)

**Background:**

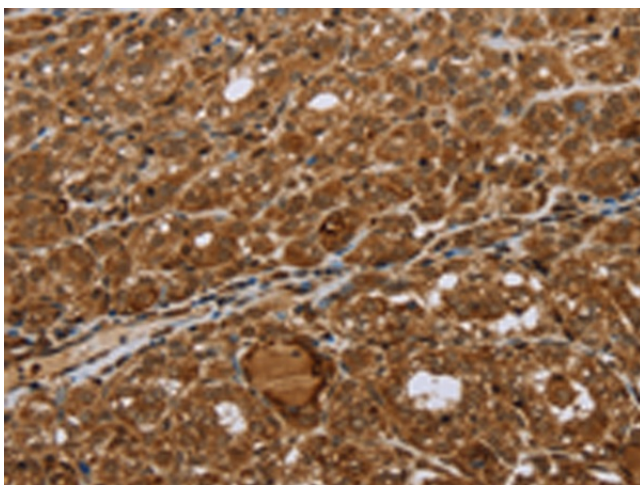
This gene encodes a member of the stathmin family of phosphoproteins. Stathmin proteins function in microtubule dynamics and signal transduction. The encoded protein plays a regulatory role in neuronal growth and is also thought to be involved in osteogenesis. Reductions in the expression of this gene have been associated with Down's syndrome and Alzheimer's disease. Alternatively spliced transcript variants have been observed for this gene. A pseudogene of this gene is located on the long arm of chromosome 6.

**Synonyms:**

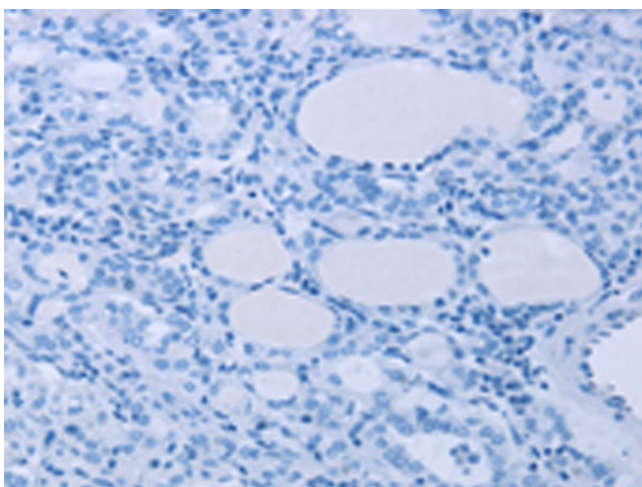
SCG10; SCGN10

**Product images:**

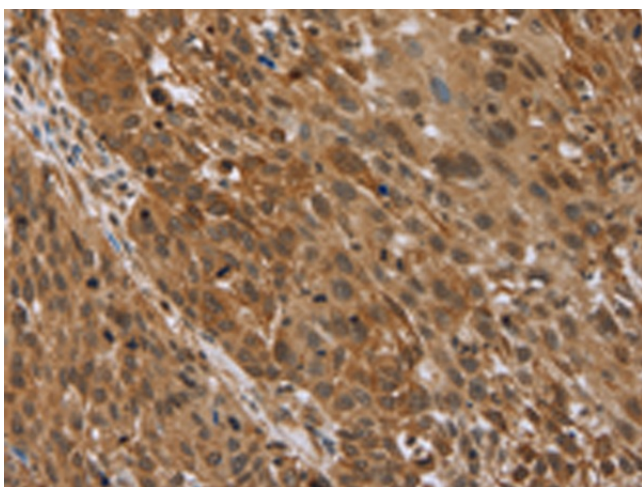
Gel: 10+12%SDS-PAGE  
Lysate: 30  $\mu$ g  
Lane: Human liver cancer tissue  
Primary antibody: TA322450  
(STMN2/STMN3/STMN4 Antibody) at dilution  
1/450  
Secondary antibody: Goat anti rabbit IgG at  
1/8000 dilution  
Exposure time: 1 minute



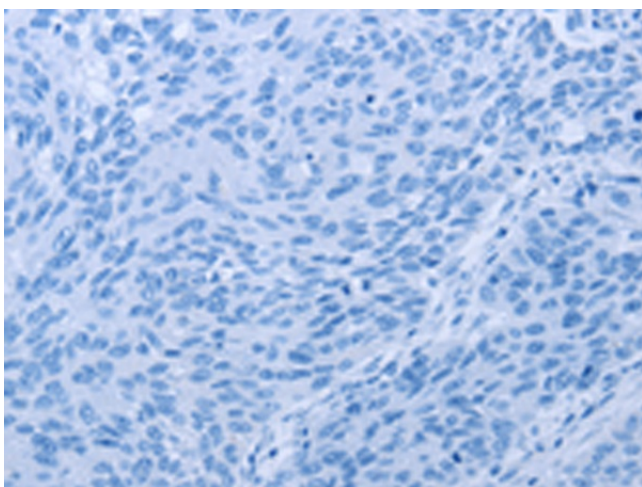
Immunohistochemistry of paraffin-embedded  
Human thyroid cancer tissue using TA322450  
(STMN2/STMN3/STMN4 Antibody) at dilution 1/45  
(Original magnification:  $\times$ 200)



Immunohistochemistry of paraffin-embedded Human thyroid cancer tissue using TA322450 (STMN2/STMN3/STMN4 Antibody) at dilution 1/45, treated with synthetic peptide. (Original magnification:  $\times 200$ )



Immunohistochemistry of paraffin-embedded Human lung cancer tissue using TA322450 (STMN2/STMN3/STMN4 Antibody) at dilution 1/45 (Original magnification:  $\times 200$ )



Immunohistochemistry of paraffin-embedded Human lung cancer tissue using TA322450 (STMN2/STMN3/STMN4 Antibody) at dilution 1/45, treated with synthetic peptide. (Original magnification:  $\times 200$ )