

## Product datasheet for **TA322446**

### PTP rho (PTPRT) Rabbit Polyclonal Antibody

#### Product data:

Product Type:	Primary Antibodies
Applications:	IHC
Recommended Dilution:	IHC: 25-100 Positive control: Human ovarian cancer Predicted cell location: Cytoplasm
Reactivity:	Human, Mouse
Host:	Rabbit
Isotype:	IgG
Clonality:	Polyclonal
Immunogen:	Synthetic peptide corresponding to a region derived from 900-915 amino acids of Human protein tyrosine phosphatase, receptor type, T
Formulation:	PBS pH7.3, 0.05% NaN <sub>3</sub> , 50% glycerol
Concentration:	lot specific
Purification:	Antigen affinity purification
Conjugation:	Unconjugated
Storage:	Store at -20°C as received.
Stability:	Stable for 12 months from date of receipt.
Gene Name:	protein tyrosine phosphatase, receptor type T
Database Link:	<a href="#">NP_008981</a> <a href="#">Entrez Gene 19281 Mouse</a> <a href="#">Entrez Gene 11122 Human</a> <a href="#">O14522</a>



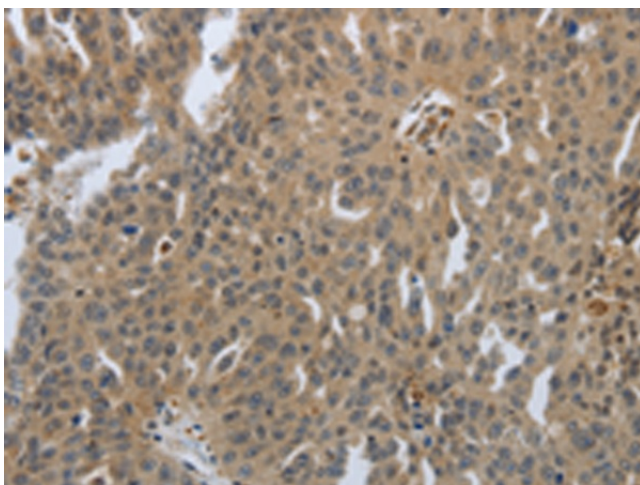
[View online »](#)

**Background:**

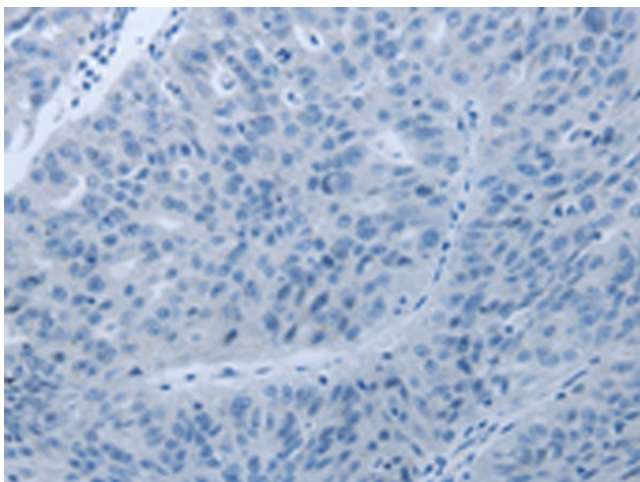
The protein encoded by this gene is a member of the protein tyrosine phosphatase (PTP) family. PTPs are known to be signaling molecules that regulate a variety of cellular processes including cell growth; differentiation; mitotic cycle; and oncogenic transformation. This PTP possesses an extracellular region; a single transmembrane region; and two tandem intracellular catalytic domains; and thus represents a receptor-type PTP. The extracellular region contains a meprin-A5 antigen-PTP (MAM) domain; Ig-like and fibronectin type III-like repeats. The protein domain structure and the expression pattern of the mouse counterpart of this PTP suggest its roles in both signal transduction and cellular adhesion in the central nervous system. Two alternatively spliced transcript variants of this gene; which encode distinct proteins; have been reported.

**Synonyms:**

RPTPrho

**Product images:**

Immunohistochemistry of paraffin-embedded Human ovarian cancer tissue using TA322446 (PTPRT Antibody) at dilution 1/30 (Original magnification:  $\times 200$ )



Immunohistochemistry of paraffin-embedded Human ovarian cancer tissue using TA322446 (PTPRT Antibody) at dilution 1/30, treated with synthetic peptide. (Original magnification:  $\times 200$ )