

Product datasheet for **TA322445S**

CDC37 Rabbit Polyclonal Antibody

Product data:

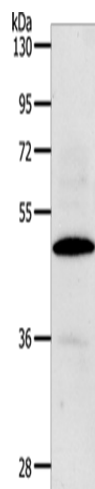
Product Type:	Primary Antibodies
Applications:	IHC, WB
Recommended Dilution:	WB: 200-1000 WB positive control: Hela cells IHC: 15-50 Positive control: Human breast cancer Predicted cell location: Cytoplasm
Reactivity:	Human, Mouse, Rat
Host:	Rabbit
Isotype:	IgG
Clonality:	Polyclonal
Immunogen:	Synthetic peptide corresponding to a region derived from 345-360 amino acids of human cell division cycle 37 homolog (<i>S. cerevisiae</i>)
Formulation:	PBS pH7.3, 0.05% NaN ₃ , 50% glycerol
Purification:	Antigen affinity purification
Conjugation:	Unconjugated
Storage:	Store at -20°C as received.
Stability:	Stable for 12 months from date of receipt.
Predicted Protein Size:	44 kDa
Gene Name:	cell division cycle 37
Database Link:	NP_008996 Entrez Gene 12539 Mouse Entrez Gene 114562 Rat Entrez Gene 11140 Human Q16543
Background:	The protein encoded by this gene is highly similar to Cdc 37; a cell division cycle control protein of <i>Sacchomyces cerevisiae</i> . This protein is a molecular chaperone with specific function in cell signal transduction. It has been shown to form complex with Hsp90 and a variety of protein kinases including CDK4; CDK6; SRC; RAF-1; MOK; as well as eIF2 alpha kinases. It is thought to play a critical role in directing Hsp90 to its target kinases.



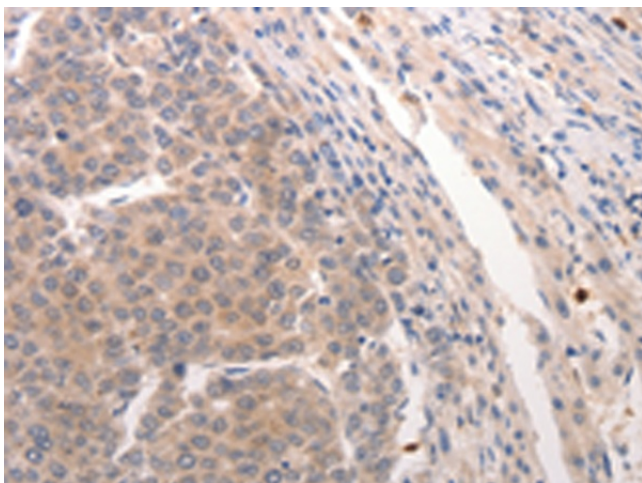
[View online »](#)

Synonyms: P50CDC37

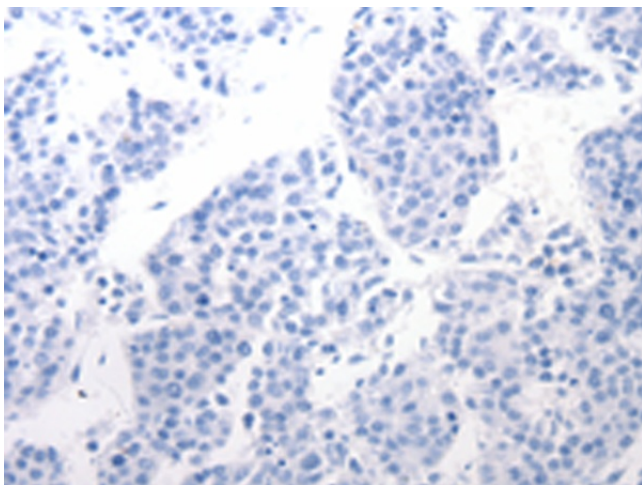
Product images:



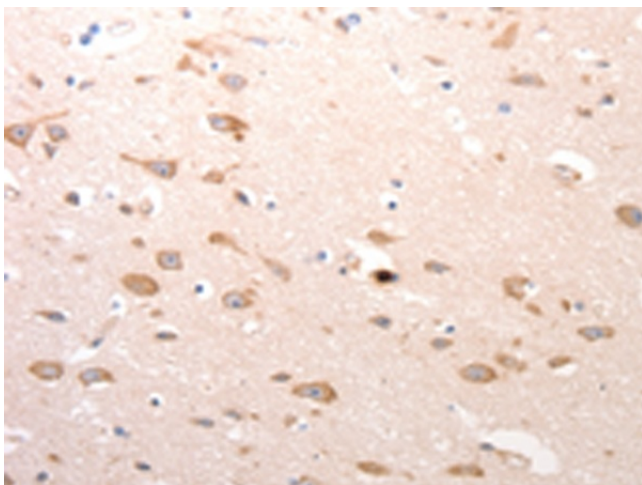
Gel: 10%SDS-PAGE
Lysate: 40 μ g
Lane: HeLa cells
Primary antibody: [TA322445] (CDC37 Antibody) at dilution 1/100
Secondary antibody: Goat anti rabbit IgG at 1/8000 dilution
Exposure time: 90 seconds



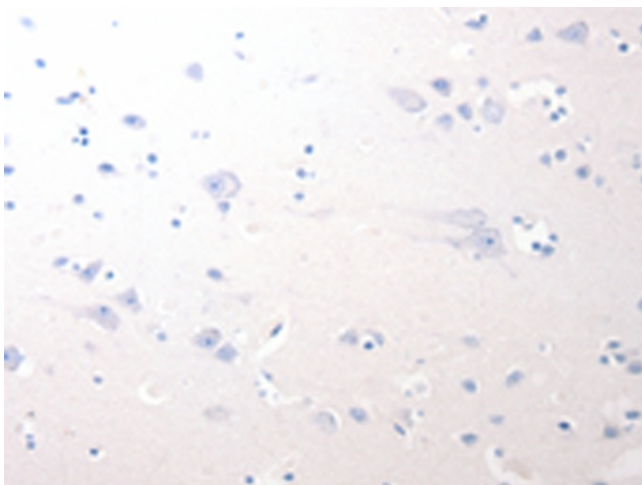
Immunohistochemistry of paraffin-embedded Human breast cancer tissue using [TA322445] (CDC37 Antibody) at dilution 1/20 (Original magnification: \times 200)



Immunohistochemistry of paraffin-embedded Human breast cancer tissue using [TA322445] (CDC37 Antibody) at dilution 1/20, treated with synthetic peptide. (Original magnification: ×200)



Immunohistochemistry of paraffin-embedded Human brain tissue using [TA322445] (CDC37 Antibody) at dilution 1/20 (Original magnification: ×200)



Immunohistochemistry of paraffin-embedded Human brain tissue using [TA322445] (CDC37 Antibody) at dilution 1/20, treated with synthetic peptide. (Original magnification: ×200)