

## Product datasheet for **TA322445**

### CDC37 Rabbit Polyclonal Antibody

#### Product data:

|                         |   |
|-------------------------|---|
| Product Type:           | Primary Antibodies  |
| Applications:           | IHC, WB   |
| Recommended Dilution:   | WB: 200-1000<br>WB positive control: Hela cells<br>IHC: 15-50<br>Positive control: Human breast cancer<br>Predicted cell location: Cytoplasm                                  |
| Reactivity:             | Human, Mouse, Rat   |
| Host:                   | Rabbit  |
| Isotype:                | IgG   |
| Clonality:              | Polyclonal  |
| Immunogen:              | Synthetic peptide corresponding to a region derived from 345-360 amino acids of human cell division cycle 37 homolog ( <i>S. cerevisiae</i> )                                 |
| Formulation:            | PBS pH7.3, 0.05% NaN <sub>3</sub> , 50% glycerol  |
| Concentration:          | lot specific  |
| Purification:           | Antigen affinity purification   |
| Conjugation:            | Unconjugated  |
| Storage:                | Store at -20°C as received.   |
| Stability:              | Stable for 12 months from date of receipt.  |
| Predicted Protein Size: | 44 kDa  |
| Gene Name:              | cell division cycle 37  |
| Database Link:          | <a href="#">NP_008996</a><br><a href="#">Entrez Gene 12539 Mouse</a> <a href="#">Entrez Gene 114562 Rat</a> <a href="#">Entrez Gene 11140 Human</a><br><a href="#">Q16543</a> |



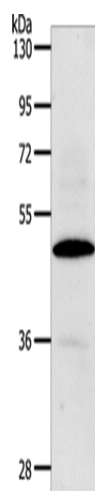
[View online »](#)

**Background:**

The protein encoded by this gene is highly similar to Cdc 37; a cell division cycle control protein of *Sacchomyces cerevisiae*. This protein is a molecular chaperone with specific function in cell signal transduction. It has been shown to form complex with Hsp90 and a variety of protein kinases including CDK4; CDK6; SRC; RAF-1; MOK; as well as eIF2 alpha kinases. It is thought to play a critical role in directing Hsp90 to its target kinases.

**Synonyms:**

P50CDC37

**Product images:**

Gel: 10%SDS-PAGE

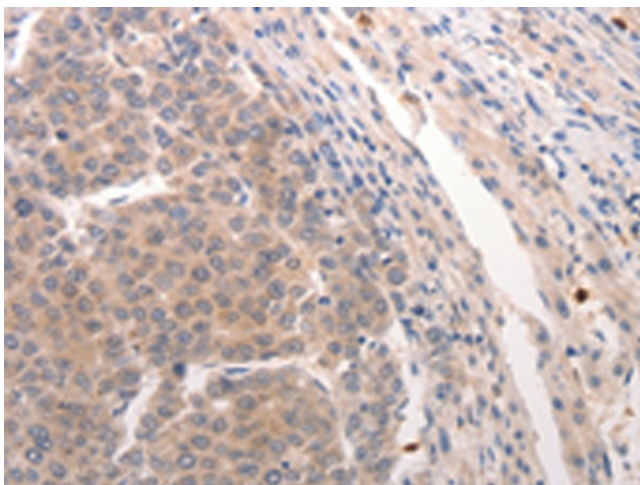
Lysate: 40 µg

Lane: HeLa cells

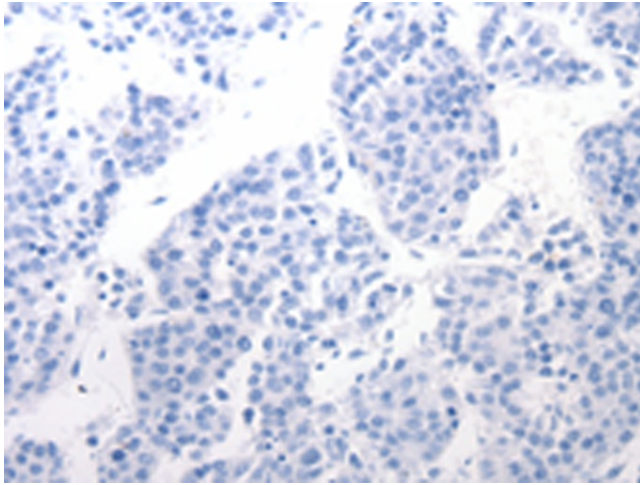
Primary antibody: TA322445 (CDC37 Antibody) at dilution 1/100

Secondary antibody: Goat anti rabbit IgG at 1/8000 dilution

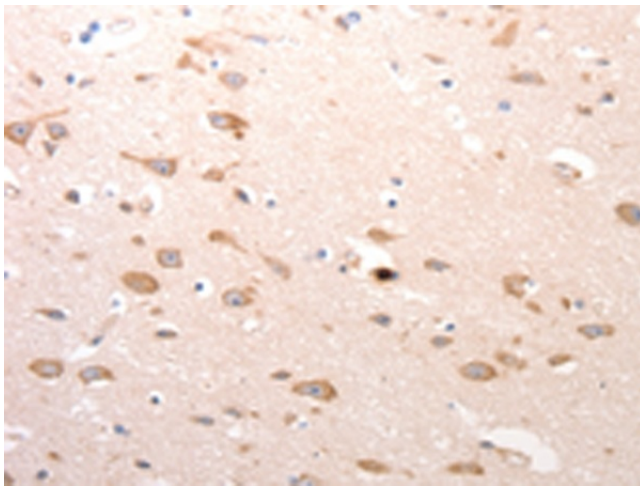
Exposure time: 90 seconds



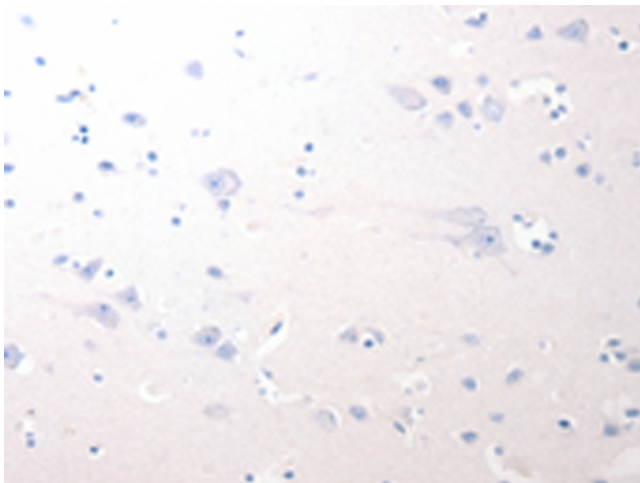
Immunohistochemistry of paraffin-embedded Human breast cancer tissue using TA322445 (CDC37 Antibody) at dilution 1/20 (Original magnification: ×200)



Immunohistochemistry of paraffin-embedded Human breast cancer tissue using TA322445 (CDC37 Antibody) at dilution 1/20, treated with synthetic peptide. (Original magnification:  $\times 200$ )



Immunohistochemistry of paraffin-embedded Human brain tissue using TA322445 (CDC37 Antibody) at dilution 1/20 (Original magnification:  $\times 200$ )



Immunohistochemistry of paraffin-embedded Human brain tissue using TA322445 (CDC37 Antibody) at dilution 1/20, treated with synthetic peptide. (Original magnification:  $\times 200$ )