

Product datasheet for **TA322444**

PTP4A3 Rabbit Polyclonal Antibody

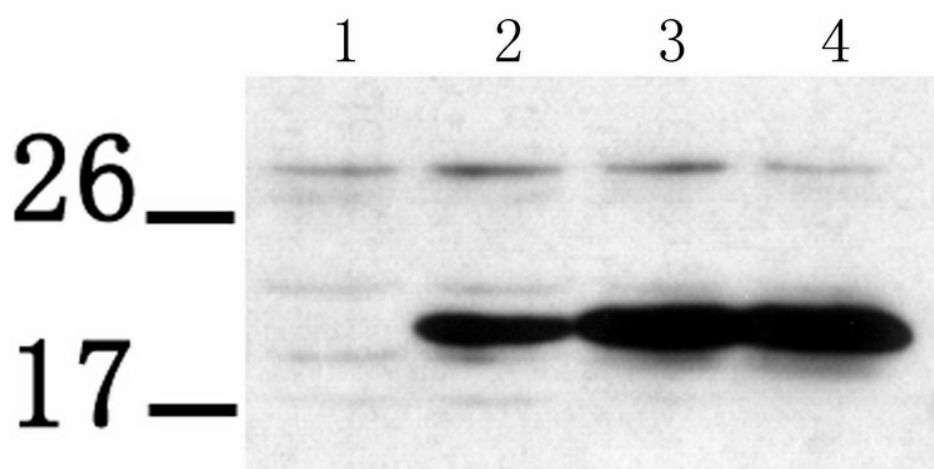
Product data:

Product Type:	Primary Antibodies
Applications:	WB
Recommended Dilution:	WB: 1:500-1000
Reactivity:	Human, Mouse
Host:	Rabbit
Isotype:	IgG
Clonality:	Polyclonal
Immunogen:	Peptide sequence around aa. 161-166 (K-D-P-H-T) derived from Human PTP4A3.
Formulation:	PBS pH7.3, 0.05% NaN ₃ , 50% glycerol
Concentration:	lot specific
Purification:	Antigen affinity purification
Conjugation:	Unconjugated
Storage:	Store at -20°C as received.
Stability:	Stable for 12 months from date of receipt.
Predicted Protein Size:	20 kDa
Gene Name:	protein tyrosine phosphatase type IVA, member 3
Database Link:	NP_009010 Entrez Gene 19245 Mouse Entrez Gene 11156 Human O75365
Background:	Protein tyrosine phosphatase which stimulates progression from G1 into S phase during mitosis. Enhances cell proliferation, cell motility and invasive activity, and promotes cancer metastasis. May be involved in the progression of cardiac hypertrophy by inhibiting intracellular calcium mobilization in response to angiotensin II.
Synonyms:	PRL-3; PRL-R; PRL3
Protein Families:	Druggable Genome, Phosphatase



[View online »](#)

Product images:



Predicted band size: 20 kDa. Positive control: LX-2 cells transfected with PRL-3 lysate.
Recommended dilution: 1/ 500-1000. (Gel: 12%SDS-PAGE Lane 1: LX-2 cells transfected with PcDNA3.1 lysate Lane 2, 3, 4: LX-2 cells transfected with 1.g; 2.g; 3.g PcDNA3.1-PRL-3 lysate Lysates: 30 ug per lane Primary antibody: 1/500 dilution Secondary antibody: Goat anti Rabbit IgG - H&L (HRP) at 1/10000 dilution Exposure time: 1 minute)