

## Product datasheet for **TA322443**

### DP1 (TFDP1) Rabbit Polyclonal Antibody

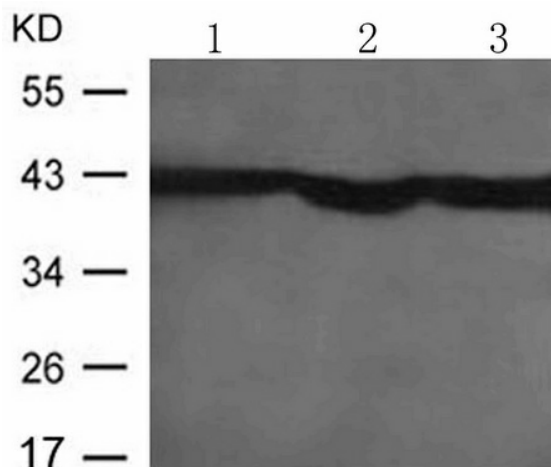
#### Product data:

Product Type:	Primary Antibodies
Applications:	WB
Recommended Dilution:	WB: 1:500-1000
Reactivity:	Human, Mouse
Host:	Rabbit
Isotype:	IgG
Clonality:	Polyclonal
Immunogen:	Peptide sequence around aa.13~17(E-L-K-V-F) derived from Human DP-1
Formulation:	PBS pH7.3, 0.05% NaN <sub>3</sub> , 50% glycerol
Concentration:	lot specific
Purification:	Antigen affinity purification
Conjugation:	Unconjugated
Storage:	Store at -20°C as received.
Stability:	Stable for 12 months from date of receipt.
Predicted Protein Size:	45 kDa
Gene Name:	transcription factor Dp-1
Database Link:	<a href="#">NP_009042</a> <a href="#">Entrez Gene 21781 Mouse</a> <a href="#">Entrez Gene 7027 Human</a> <a href="#">Q14186</a>
Background:	Can stimulate E2F-dependent transcription. Binds DNA cooperatively with E2F family members through the E2 recognition site, 5'-TTTC[CG]CGC-3', found in the promoter region of a number of genes whose products are involved in cell cycle regulation or in DNA replication. The DP2/E2F complex functions in the control of cell-cycle progression from G1 to S phase. The E2F-1/DP complex appears to mediate both cell proliferation and apoptosis.
Synonyms:	DILC; Dp-1; DP1; DRTF1
Protein Families:	Druggable Genome, Transcription Factors
Protein Pathways:	Cell cycle, TGF-beta signaling pathway



[View online »](#)

## Product images:



Predicted band size: 45 kDa. Positive control: HeLa, HUVEC and HepG2 cells lysate.  
Recommended dilution: 1/ 500-1000. (Gel: 10%SDS-PAGE Lane 1, 2, 3: HeLa, HUVEC and HepG2 cells lysate Lysates: 30 ug per lane  
Primary antibody: 1/500 dilution Secondary antibody: Goat anti Rabbit IgG - H&L (HRP) at 1/10000 dilution Exposure time: 1 minute)