

## Product datasheet for **TA322439S**

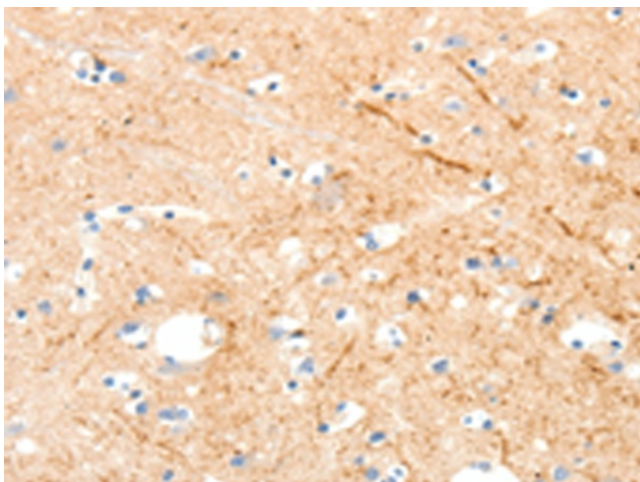
### MAP4K1 Rabbit Polyclonal Antibody

#### Product data:

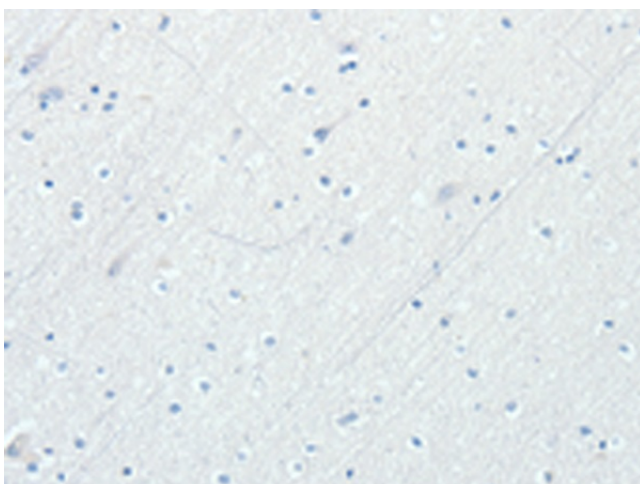
Product Type:	Primary Antibodies
Applications:	IHC
Recommended Dilution:	IHC: 25-100 Positive control: Human brain Predicted cell location: Cytoplasm
Reactivity:	Human
Host:	Rabbit
Isotype:	IgG
Clonality:	Polyclonal
Immunogen:	Synthetic peptide corresponding to a region derived from 2-15 amino acids of human mitogen-activated protein kinase kinase kinase 1
Formulation:	PBS pH7.3, 0.05% NaN <sub>3</sub> , 50% glycerol
Purification:	Antigen affinity purification
Conjugation:	Unconjugated
Storage:	Store at -20°C as received.
Stability:	Stable for 12 months from date of receipt.
Gene Name:	mitogen-activated protein kinase kinase kinase kinase 1
Database Link:	<a href="#">NP_009112</a> <a href="#">Entrez Gene 11184 Human</a> <a href="#">Q92918</a>
Background:	This gene belongs to the protein kinase superfamily; STE Ser/Thr protein kinase family; STE20 subfamily. It plays a role in the response to environmental stress and hematopoietic lineage decisions and growth regulation. Appears to act upstream of the JUN N-terminal pathway.
Synonyms:	HPK1
Protein Families:	Druggable Genome, Protein Kinase
Protein Pathways:	MAPK signaling pathway



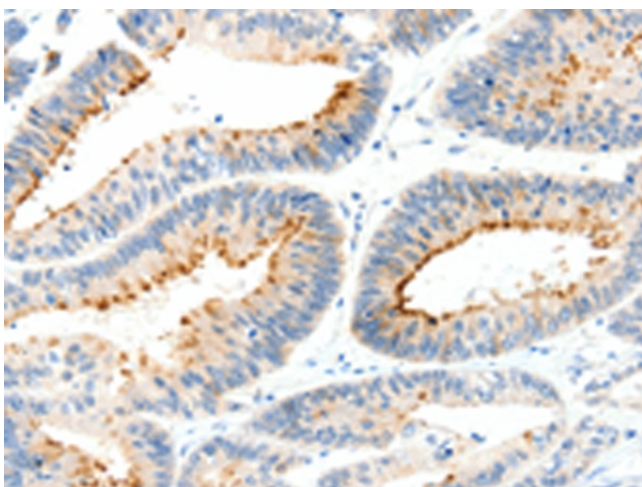
[View online »](#)

**Product images:**

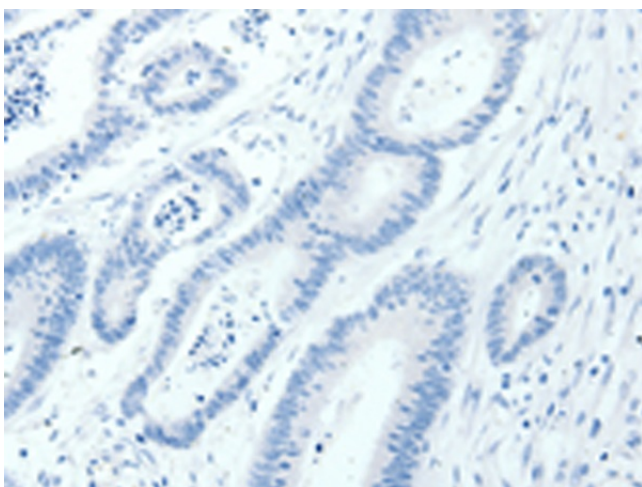
Immunohistochemistry of paraffin-embedded Human brain tissue using [TA322439] (MAP4K1 Antibody) at dilution 1/30 (Original magnification: ×200)



Immunohistochemistry of paraffin-embedded Human brain tissue using [TA322439] (MAP4K1 Antibody) at dilution 1/30, treated with synthetic peptide. (Original magnification: ×200)



Immunohistochemistry of paraffin-embedded Human colon cancer tissue using [TA322439] (MAP4K1 Antibody) at dilution 1/30 (Original magnification:  $\times 200$ )



Immunohistochemistry of paraffin-embedded Human colon cancer tissue using [TA322439] (MAP4K1 Antibody) at dilution 1/30, treated with synthetic peptide. (Original magnification:  $\times 200$ )