

## Product datasheet for **TA322437**

### ABCB8 Rabbit Polyclonal Antibody

#### Product data:

Product Type:	Primary Antibodies
Applications:	WB
Recommended Dilution:	WB: 500-2000 WB positive control: Mouse heart tissue
Reactivity:	Human, Mouse, Rat
Host:	Rabbit
Isotype:	IgG
Clonality:	Polyclonal
Immunogen:	Fusion protein corresponding to a region derived from 394-693 amino acids of Human ATP-binding cassette sub-family B member 8
Formulation:	PBS pH7.3, 0.05% NaN <sub>3</sub> , 50% glycerol
Concentration:	lot specific
Purification:	Antigen affinity purification
Conjugation:	Unconjugated
Storage:	Store at -20°C as received.
Stability:	Stable for 12 months from date of receipt.
Predicted Protein Size:	76 kDa
Gene Name:	ATP binding cassette subfamily B member 8
Database Link:	<a href="#">NP_009119</a> <a href="#">Entrez Gene 74610 Mouse</a> <a href="#">Entrez Gene 362302 Rat</a> <a href="#">Entrez Gene 11194 Human</a> <a href="#">Q9NUT2</a>



[View online »](#)

**Background:**

The membrane-associated protein encoded by this gene is a member of the superfamily of ATP-binding cassette (ABC) transporters. ABC proteins transport various molecules across extra- and intra-cellular membranes. ABC genes are divided into seven distinct subfamilies (ABC1; MDR/TAP; MRP; ALD; OABP; GCN20; White). This protein is a member of the MDR/TAP subfamily. Members of the MDR/TAP subfamily are involved in multidrug resistance as well as antigen presentation. The function of this half-transporter has not yet been determined; however; it may involve the compartmentalization and transport of heme; as well as peptides; from the mitochondria to the nucleus and cytosol. This protein may also play a role in the transport of phospholipids into mitochondrial membranes.

**Synonyms:**

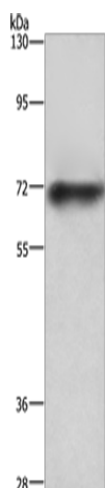
EST328128; M-ABC1; MABC1

**Protein Families:**

Druggable Genome, Transmembrane

**Protein Pathways:**

ABC transporters

**Product images:**

Gel: 6%SDS-PAGE

Lysate: 40 µg

Lane: Mouse heart tissue

Primary antibody: TA322437 (ABCB8 Antibody) at dilution 1/750

Secondary antibody: Goat anti rabbit IgG at 1/8000 dilution

Exposure time: 40 seconds