

Product datasheet for **TA322433**

DUSP12 Rabbit Polyclonal Antibody

Product data:

Product Type:	Primary Antibodies
Applications:	IHC, WB
Recommended Dilution:	WB: 1000-5000 WB positive control: Hela cell lysate IHC: 100-200 Positive control: Human liver cancer Predicted cell location: Cytoplasm
Reactivity:	Human, Mouse, Rat
Host:	Rabbit
Isotype:	IgG
Clonality:	Polyclonal
Immunogen:	Full length fusion protein
Formulation:	PBS pH7.3, 0.05% NaN ₃ , 50% glycerol
Concentration:	lot specific
Purification:	Antigen affinity purification
Conjugation:	Unconjugated
Storage:	Store at -20°C as received.
Stability:	Stable for 12 months from date of receipt.
Gene Name:	dual specificity phosphatase 12
Database Link:	NP_009171 Entrez Gene 64014 Rat Entrez Gene 80915 Mouse Entrez Gene 11266 Human Q9UNI6



[View online »](#)

Background:

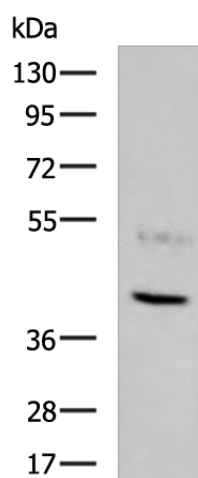
The protein encoded by this gene is a member of the dual specificity protein phosphatase subfamily. These phosphatases inactivate their target kinases by dephosphorylating both the phosphoserine/threonine and phosphotyrosine residues. They negatively regulate members of the mitogen-activated protein (MAP) kinase superfamily (MAPK/ERK; SAPK/JNK; p38); which is associated with cellular proliferation and differentiation. Different members of the family of dual specificity phosphatases show distinct substrate specificities for various MAP kinases; different tissue distribution and subcellular localization; and different modes of inducibility of their expression by extracellular stimuli. This gene product is the human ortholog of the *Saccharomyces cerevisiae* YVH1 protein tyrosine phosphatase. It is localized predominantly in the nucleus; and is novel in that it contains; and is regulated by a zinc finger domain.

Synonyms:

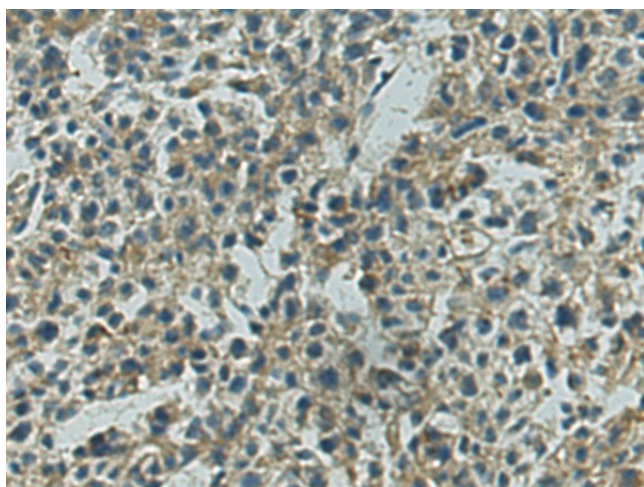
DUSP1; YVH1

Protein Families:

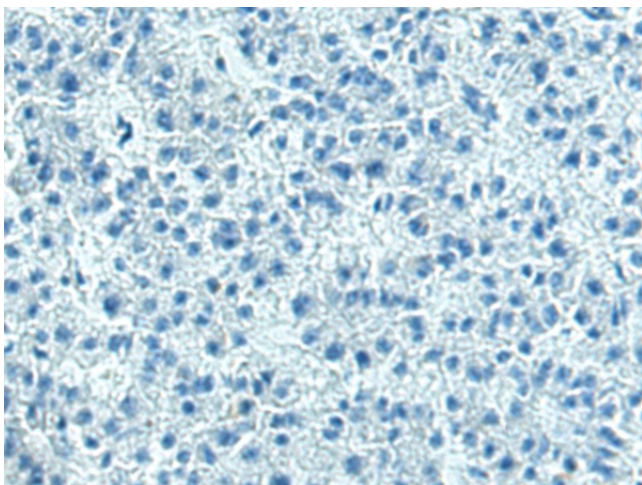
Druggable Genome, Phosphatase

Product images:

Gel: 8%SDS-PAGE
Lysate: 40 µg
Lane: HeLa cell lysate
Primary antibody: TA322433 (DUSP12 Antibody)
at dilution 1/900
Secondary antibody: Goat anti rabbit IgG at
1/5000 dilution
Exposure time: 4 minutes



Immunohistochemistry of paraffin-embedded
Human liver cancer tissue using TA322433
(DUSP12 Antibody) at dilution 1/120 (Original
magnification: ×200)



Immunohistochemistry of paraffin-embedded Human liver cancer tissue using TA322433 (DUSP12 Antibody) at dilution 1/120, treated with fusion protein. (Original magnification: $\times 200$)