

Product datasheet for **TA322430**

GLUR3 (GRIA3) Rabbit Polyclonal Antibody

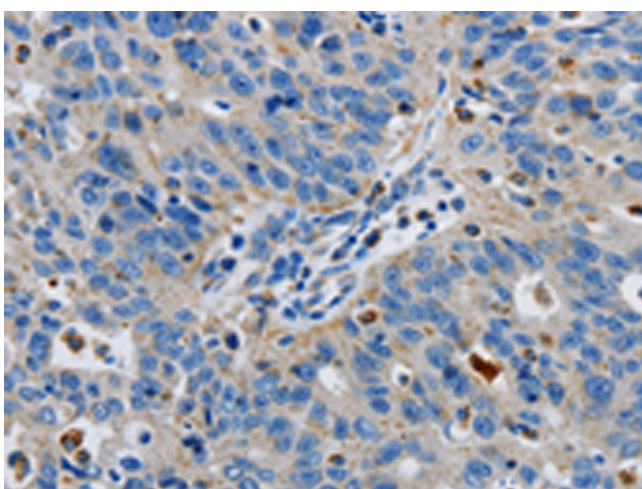
Product data:

Product Type:	Primary Antibodies
Applications:	IHC
Recommended Dilution:	IHC: 25-100 Positive control: Human ovarian cancer Predicted cell location: Cytoplasm
Reactivity:	Human, Mouse, Rat
Host:	Rabbit
Isotype:	IgG
Clonality:	Polyclonal
Immunogen:	Synthetic peptide corresponding to a region derived from 290-302 amino acids of Human glutamate receptor, ionotropic, AMPA 3
Formulation:	PBS pH7.3, 0.05% NaN ₃ , 50% glycerol
Concentration:	lot specific
Purification:	Antigen affinity purification
Conjugation:	Unconjugated
Storage:	Store at -20°C as received.
Stability:	Stable for 12 months from date of receipt.
Gene Name:	glutamate ionotropic receptor AMPA type subunit 3
Database Link:	NP_000819 Entrez Gene 29628 Rat Entrez Gene 53623 Mouse Entrez Gene 2892 Human P42263

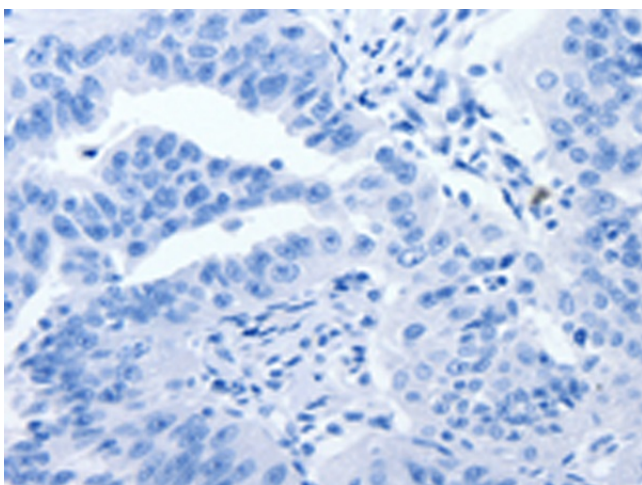


[View online »](#)

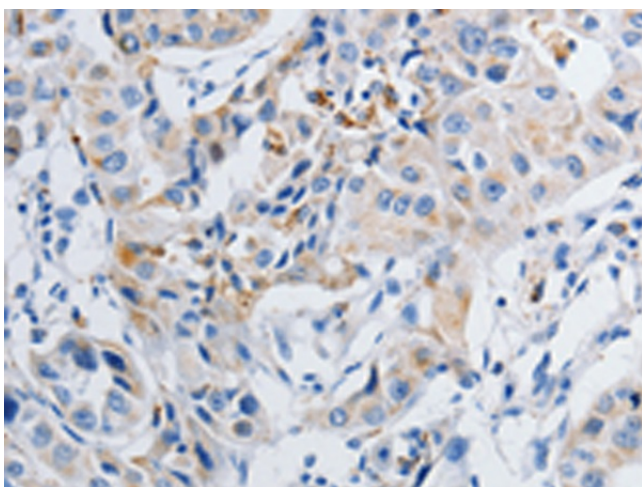
- Background:** Glutamate receptors are the predominant excitatory neurotransmitter receptors in the mammalian brain and are activated in a variety of normal neurophysiologic processes. These receptors are heteromeric protein complexes composed of multiple subunits; arranged to form ligand-gated ion channels. The classification of glutamate receptors is based on their activation by different pharmacologic agonists. The subunit encoded by this gene belongs to a family of AMPA (alpha-amino-3-hydroxy-5-methyl-4-isoxazole propionate)-sensitive glutamate receptors; and is subject to RNA editing (AGA->GGA; R->G). Alternative splicing at this locus results in different isoforms; which may vary in their signal transduction properties.
- Synonyms:** GluA3; GLUR-C; GLUR-K3; GLUR3; GLURC; MRX94
- Protein Families:** Druggable Genome, Ion Channels: Glutamate Receptors, Transmembrane
- Protein Pathways:** Long-term depression, Neuroactive ligand-receptor interaction

Product images:

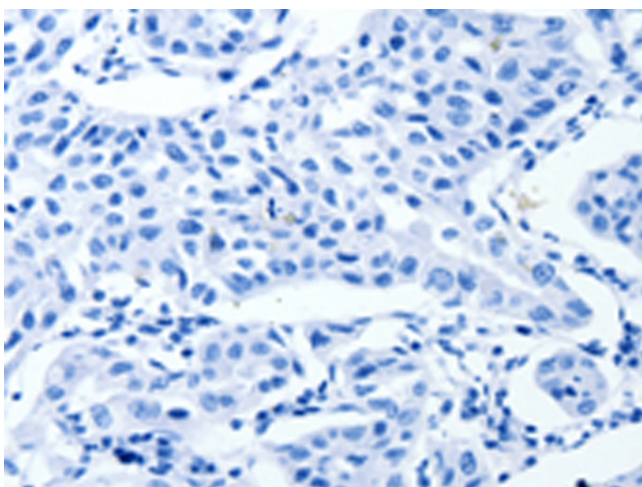
Immunohistochemistry of paraffin-embedded Human ovarian cancer tissue using TA322430 (GRIA3 Antibody) at dilution 1/50 (Original magnification: x200)



Immunohistochemistry of paraffin-embedded Human ovarian cancer tissue using TA322430 (GRIA3 Antibody) at dilution 1/50, treated with synthetic peptide. (Original magnification: x200)



Immunohistochemistry of paraffin-embedded Human lung cancer tissue using TA322430 (GRIA3 Antibody) at dilution 1/50 (Original magnification: ×200)



Immunohistochemistry of paraffin-embedded Human lung cancer tissue using TA322430 (GRIA3 Antibody) at dilution 1/50, treated with synthetic peptide. (Original magnification: ×200)