

## Product datasheet for **TA322425**

### STAT1 Rabbit Polyclonal Antibody

#### Product data:

Product Type:	Primary Antibodies
Applications:	IHC, WB
Recommended Dilution:	WB: 250-1000 WB positive control: NIH/3T3 cells IHC: 15-60 Positive control: Human lung cancer Predicted cell location: Cytoplasm
Reactivity:	Human, Mouse
Host:	Rabbit
Isotype:	IgG
Clonality:	Polyclonal
Immunogen:	Fusion protein corresponding to a region derived from 3-230 amino acids of Human Signal transducer and activator of transcription 1-alpha/beta
Formulation:	PBS pH7.3, 0.05% NaN <sub>3</sub> , 50% glycerol
Concentration:	lot specific
Purification:	Antigen affinity purification
Conjugation:	Unconjugated
Storage:	Store at -20°C as received.
Stability:	Stable for 12 months from date of receipt.
Predicted Protein Size:	87 kDa
Gene Name:	signal transducer and activator of transcription 1
Database Link:	<a href="#">NP_009330</a> <a href="#">Entrez Gene 20846 Mouse</a> <a href="#">Entrez Gene 6772 Human</a> <a href="#">P42224</a>



[View online »](#)

**Background:**

The protein encoded by this gene is a member of the STAT protein family. In response to cytokines and growth factors; STAT family members are phosphorylated by the receptor associated kinases; and then form homo- or heterodimers that translocate to the cell nucleus where they act as transcription activators. This protein can be activated by various ligands including interferon-alpha; interferon-gamma; EGF; PDGF and IL6. This protein mediates the expression of a variety of genes; which is thought to be important for cell viability in response to different cell stimuli and pathogens. Two alternatively spliced transcript variants encoding distinct isoforms have been described.

**Synonyms:**

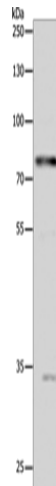
CANDF7; IMD31A; IMD31B; IMD31C; ISGF-3; STAT91

**Protein Families:**

Druggable Genome, Transcription Factors

**Protein Pathways:**

Chemokine signaling pathway, Jak-STAT signaling pathway, Pancreatic cancer, Pathways in cancer, Toll-like receptor signaling pathway

**Product images:**

Gel: 8%SDS-PAGE

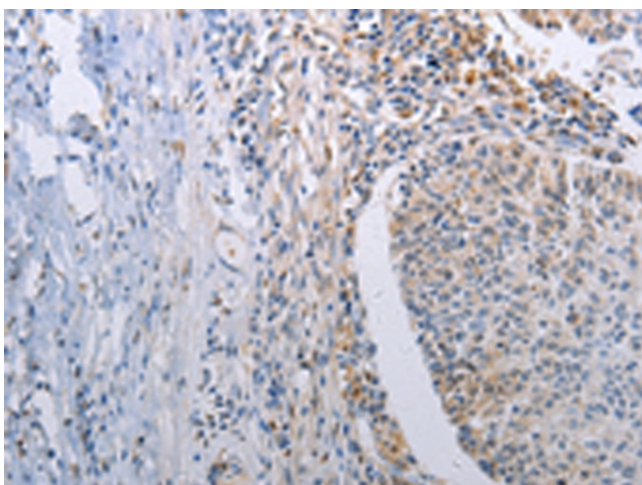
Lysate: 30 µg

Lane: NIH/3T3 cells

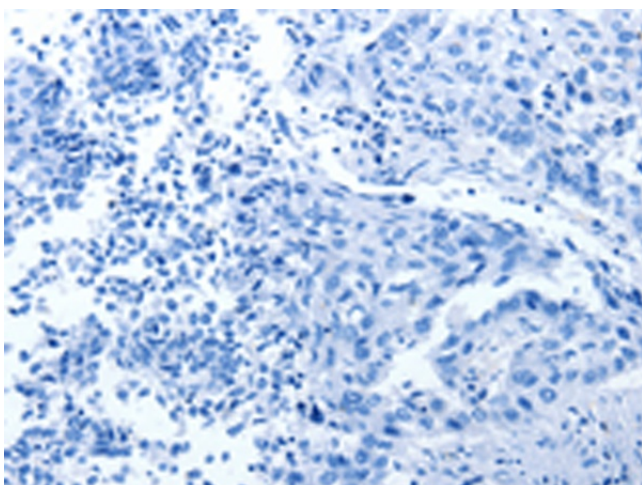
Primary antibody: TA322425 (STAT1 Antibody) at dilution 1/250

Secondary antibody: Goat anti rabbit IgG at 1/8000 dilution

Exposure time: 10 seconds



Immunohistochemistry of paraffin-embedded Human lung cancer tissue using TA322425 (STAT1 Antibody) at dilution 1/30 (Original magnification:  $\times 200$ )



Immunohistochemistry of paraffin-embedded Human lung cancer tissue using TA322425 (STAT1 Antibody) at dilution 1/30, treated with fusion protein. (Original magnification:  $\times 200$ )