

## Product datasheet for **TA322415S**

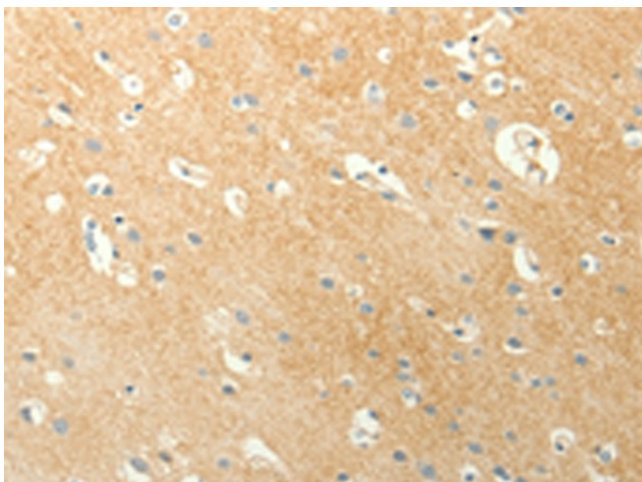
### EDG7 (LPAR3) Rabbit Polyclonal Antibody

#### Product data:

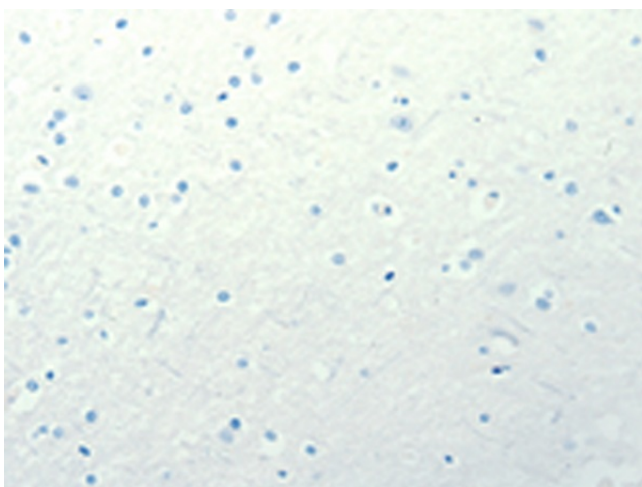
Product Type:	Primary Antibodies
Applications:	IHC
Recommended Dilution:	IHC: 15-50 Positive control: Human brain Predicted cell location: Cytoplasm
Reactivity:	Human, Mouse, Rat
Host:	Rabbit
Isotype:	IgG
Clonality:	Polyclonal
Immunogen:	Synthetic peptide corresponding to a region derived from 15-29 amino acids of human lysophosphatidic acid receptor 3
Formulation:	PBS pH7.3, 0.05% NaN <sub>3</sub> , 50% glycerol
Purification:	Antigen affinity purification
Conjugation:	Unconjugated
Storage:	Store at -20°C as received.
Stability:	Stable for 12 months from date of receipt.
Gene Name:	lysophosphatidic acid receptor 3
Database Link:	<a href="#">NP_036284</a> <a href="#">Entrez Gene 65086 Mouse</a> <a href="#">Entrez Gene 66025 Rat</a> <a href="#">Entrez Gene 23566 Human</a> <a href="#">Q9UBY5</a>
Background:	This gene encodes a member of the G protein-coupled receptor family; as well as the EDG family of proteins. This protein functions as a cellular receptor for lysophosphatidic acid and mediates lysophosphatidic acid-evoked calcium mobilization. This receptor couples predominantly to G(q/11) alpha proteins.
Synonyms:	Edg-7; EDG7; GPCR; HOFNH30; LP-A3; LPA3; RP4-678I3
Protein Families:	Druggable Genome, GPCR, Transmembrane
Protein Pathways:	Neuroactive ligand-receptor interaction



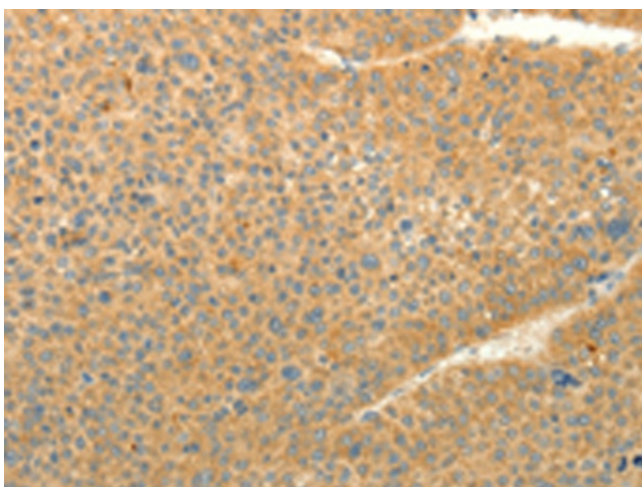
[View online »](#)

**Product images:**

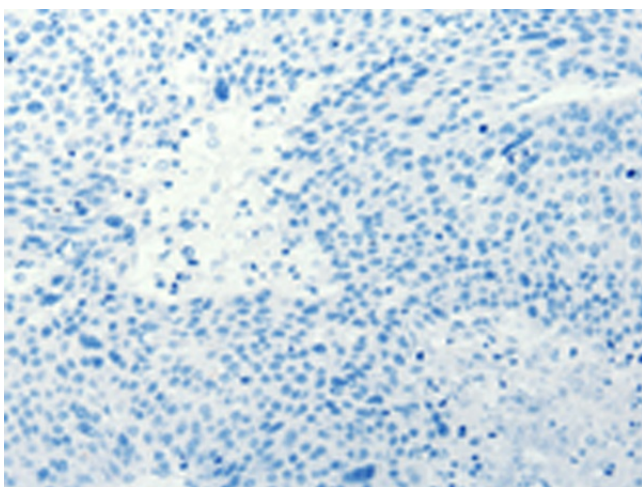
Immunohistochemistry of paraffin-embedded Human brain tissue using [TA322415] (LPAR3 Antibody) at dilution 1/10 (Original magnification: ×200)



Immunohistochemistry of paraffin-embedded Human brain tissue using [TA322415] (LPAR3 Antibody) at dilution 1/10, treated with synthetic peptide. (Original magnification: ×200)



Immunohistochemistry of paraffin-embedded Human liver cancer tissue using [TA322415] (LPAR3 Antibody) at dilution 1/10 (Original magnification:  $\times 200$ )



Immunohistochemistry of paraffin-embedded Human liver cancer tissue using [TA322415] (LPAR3 Antibody) at dilution 1/10, treated with synthetic peptide. (Original magnification:  $\times 200$ )