

## Product datasheet for **TA322408**

### MAFF Rabbit Polyclonal Antibody

#### Product data:

Product Type:	Primary Antibodies
Applications:	IHC
Recommended Dilution:	IHC: 25-100 Positive control: Human colon cancer Predicted cell location: Cytoplasm
Reactivity:	Human, Mouse
Host:	Rabbit
Isotype:	IgG
Clonality:	Polyclonal
Immunogen:	Synthetic peptide corresponding to a region derived from 76-84 amino acids of Human v-maf musculoaponeurotic fibrosarcoma oncogene homolog F (avian)
Formulation:	PBS pH7.3, 0.05% NaN <sub>3</sub> , 50% glycerol
Concentration:	lot specific
Purification:	Antigen affinity purification
Conjugation:	Unconjugated
Storage:	Store at -20°C as received.
Stability:	Stable for 12 months from date of receipt.
Predicted Protein Size:	18 kDa
Gene Name:	MAF bZIP transcription factor F
Database Link:	<a href="#">NP_036455</a> <a href="#">Entrez Gene 17133 Mouse</a> <a href="#">Entrez Gene 23764 Human</a> <a href="#">Q9ULX9</a>



[View online »](#)

**Background:**

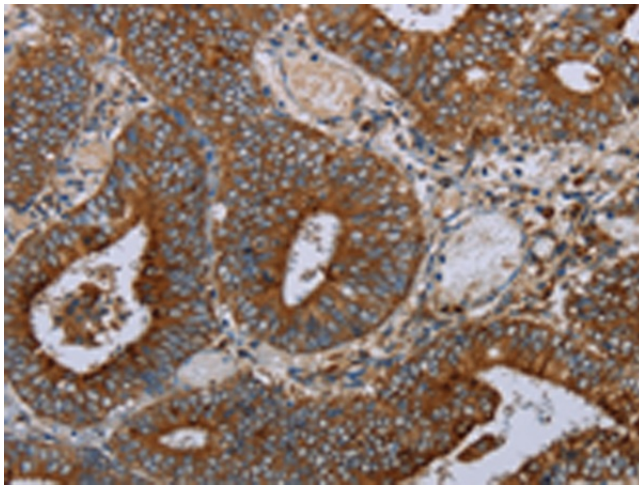
The protein encoded by this gene is a basic leucine zipper (bZIP) transcription factor that lacks a transactivation domain. It is known to bind the US-2 DNA element in the promoter of the oxytocin receptor (OTR) gene and most likely heterodimerizes with other leucine zipper-containing proteins to enhance expression of the OTR gene during term pregnancy. The encoded protein can also form homodimers; and since it lacks a transactivation domain; the homodimer may act as a repressor of transcription. This gene may also be involved in the cellular stress response. Multiple transcript variants encoding two different isoforms have been found for this gene.

**Synonyms:**

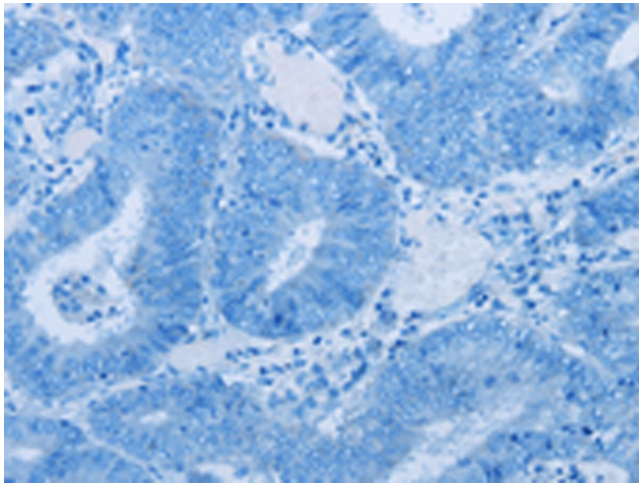
hMAFF; U-MAF

**Protein Families:**

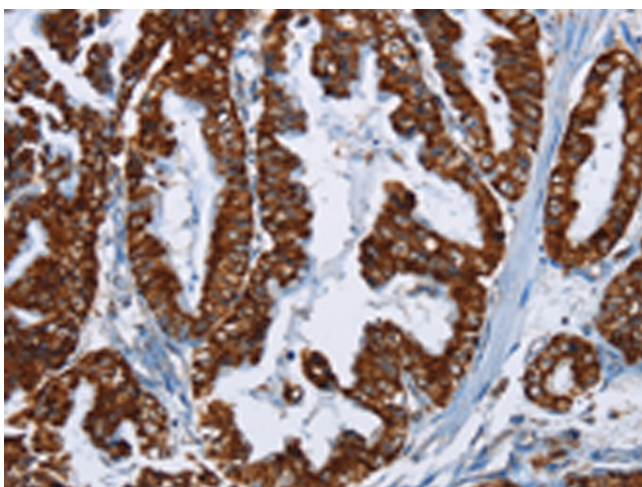
Druggable Genome, Transcription Factors

**Product images:**

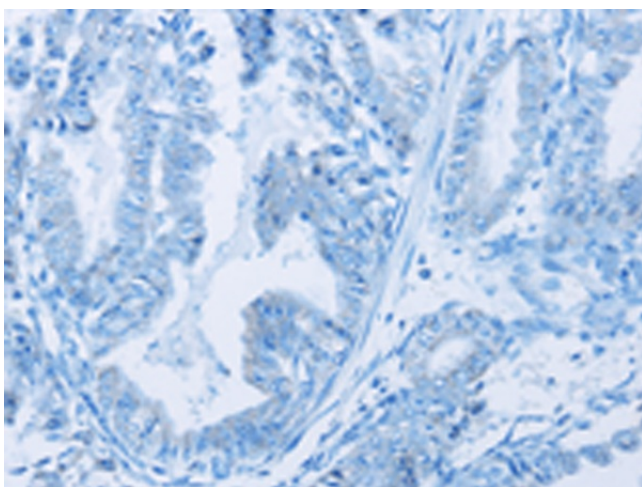
Immunohistochemistry of paraffin-embedded Human colon cancer tissue using TA322408 (MAFF Antibody) at dilution 1/20 (Original magnification:  $\times 200$ )



Immunohistochemistry of paraffin-embedded Human colon cancer tissue using TA322408 (MAFF Antibody) at dilution 1/20, treated with synthetic peptide. (Original magnification:  $\times 200$ )



Immunohistochemistry of paraffin-embedded Human esophagus cancer tissue using TA322408 (MAFF Antibody) at dilution 1/20 (Original magnification:  $\times 200$ )



Immunohistochemistry of paraffin-embedded Human esophagus cancer tissue using TA322408 (MAFF Antibody) at dilution 1/20, treated with synthetic peptide. (Original magnification:  $\times 200$ )