

## Product datasheet for **TA322407**

### STAT5B Rabbit Polyclonal Antibody

#### Product data:

Product Type:	Primary Antibodies
Applications:	IHC, WB
Recommended Dilution:	WB: 500-2000 WB positive control: SKOV3 cells IHC: 25-100 Positive control: Human cervical cancer Predicted cell location: Cytoplasm
Reactivity:	Human, Mouse, Rat
Host:	Rabbit
Isotype:	IgG
Clonality:	Polyclonal
Immunogen:	Fusion protein corresponding to a region derived from 46-351 amino acids of Human Signal transducer and activator of transcription 5B
Formulation:	PBS pH7.3, 0.05% NaN <sub>3</sub> , 50% glycerol
Concentration:	lot specific
Purification:	Antigen affinity purification
Conjugation:	Unconjugated
Storage:	Store at -20°C as received.
Stability:	Stable for 12 months from date of receipt.
Predicted Protein Size:	45 kDa
Gene Name:	signal transducer and activator of transcription 5B
Database Link:	<a href="#">NP_036580</a> <a href="#">Entrez Gene 20851 Mouse</a> <a href="#">Entrez Gene 25126 Rat</a> <a href="#">Entrez Gene 6777 Human</a> <a href="#">P51692</a>



[View online »](#)

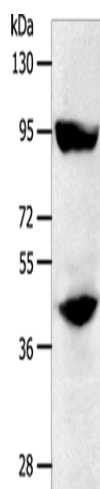
**Background:** The protein encoded by this gene is a member of the STAT family of transcription factors. In response to cytokines and growth factors, STAT family members are phosphorylated by the receptor associated kinases, and then form homo- or heterodimers that translocate to the cell nucleus where they act as transcription activators. This protein mediates the signal transduction triggered by various cell ligands, such as IL2, IL4, CSF1, and different growth hormones. It has been shown to be involved in diverse biological processes, such as TCR signaling, apoptosis, adult mammary gland development, and sexual dimorphism of liver gene expression. This gene was found to fuse to retinoic acid receptor-alpha (RARA) gene in a small subset of acute promyelocytic leukemias (APLL). The dysregulation of the signaling pathways mediated by this protein may be the cause of the APLL.

**Synonyms:** STAT5

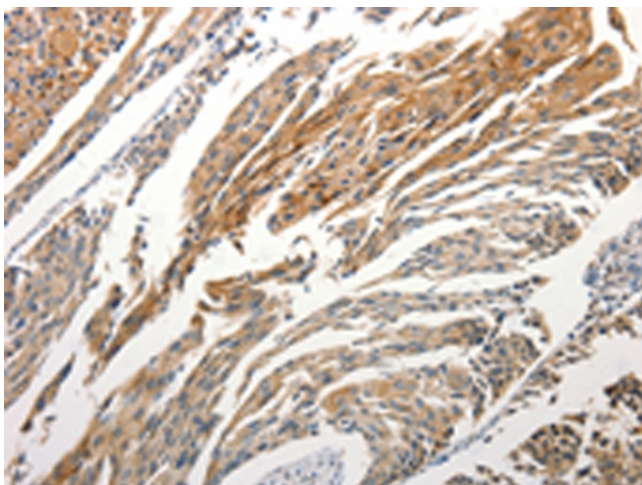
**Protein Families:** Druggable Genome, ES Cell Differentiation/IPS, Stem cell relevant signaling - JAK/STAT signaling pathway, Transcription Factors

**Protein Pathways:** Acute myeloid leukemia, Chemokine signaling pathway, Chronic myeloid leukemia, ErbB signaling pathway, Jak-STAT signaling pathway, Pathways in cancer

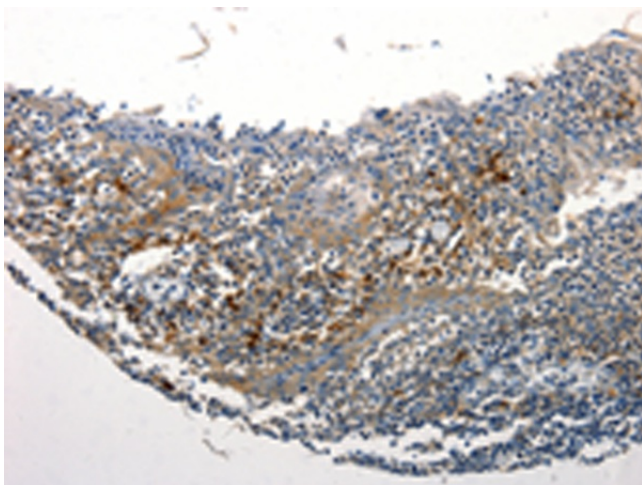
### Product images:



Gel: 10%SDS-PAGE  
Lysate: 50 µg  
Lane: SKOV3 cells  
Primary antibody: TA322407 (STAT5B Antibody)  
at dilution 1/200  
Secondary antibody: Goat anti rabbit IgG at  
1/8000 dilution  
Exposure time: 1 minute



Immunohistochemistry of paraffin-embedded Human cervical cancer tissue using TA322407 (STAT5B Antibody) at dilution 1/25. (Original magnification:  $\times 200$ )



Immunohistochemistry of paraffin-embedded Human tonsil tissue using TA322407 (STAT5B Antibody) at dilution 1/25. (Original magnification:  $\times 200$ )