

## Product datasheet for **TA322404S**

### 14 3 3 gamma (YWHAG) Rabbit Polyclonal Antibody

#### Product data:

Product Type:	Primary Antibodies
Applications:	IHC, WB
Recommended Dilution:	WB: 1000-5000 WB positive control: 293T and Jurkat cells IHC: 50-200 Positive control: Human lung cancer Predicted cell location: Cytoplasm
Reactivity:	Human, Mouse, Rat
Host:	Rabbit
Isotype:	IgG
Clonality:	Polyclonal
Immunogen:	Synthetic peptide corresponding to a region derived from 141-154 amino acids of Human tyrosine 3-monooxygenase/tryptophan 5-monooxygenase activation protein, gamma polypeptide
Formulation:	PBS pH7.3, 0.05% NaN <sub>3</sub> , 50% glycerol
Purification:	Antigen affinity purification
Conjugation:	Unconjugated
Storage:	Store at -20°C as received.
Stability:	Stable for 12 months from date of receipt.
Predicted Protein Size:	28 kDa
Gene Name:	tyrosine 3-monooxygenase/tryptophan 5-monooxygenase activation protein gamma
Database Link:	<a href="#">NP_036611</a> <a href="#">Entrez Gene 22628 Mouse</a> <a href="#">Entrez Gene 56010 Rat</a> <a href="#">Entrez Gene 7532 Human</a> <a href="#">P61981</a>



[View online »](#)

**Background:**

This gene product belongs to the 14-3-3 family of proteins which mediate signal transduction by binding to phosphoserine-containing proteins. This highly conserved protein family is found in both plants and mammals; and this protein is 100% identical to the rat ortholog. It is induced by growth factors in human vascular smooth muscle cells; and is also highly expressed in skeletal and heart muscles; suggesting an important role for this protein in muscle tissue. It has been shown to interact with RAF1 and protein kinase C; proteins involved in various signal transduction pathways.

**Synonyms:**

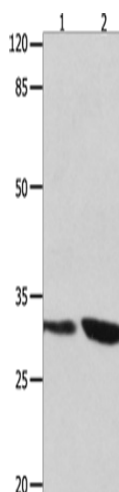
14-3-3GAMMA; PPP1R170

**Protein Families:**

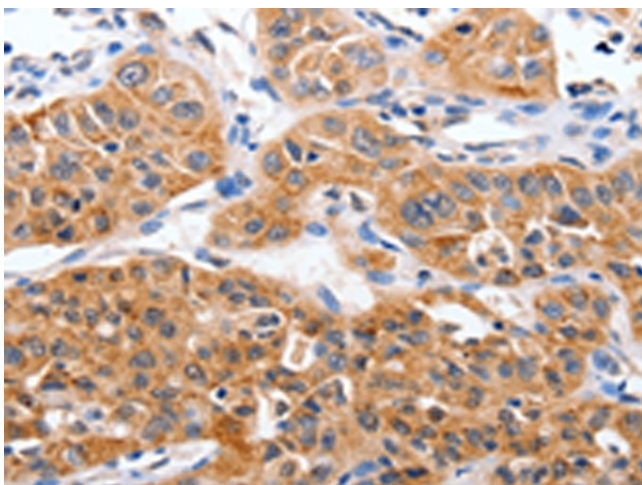
Druggable Genome

**Protein Pathways:**

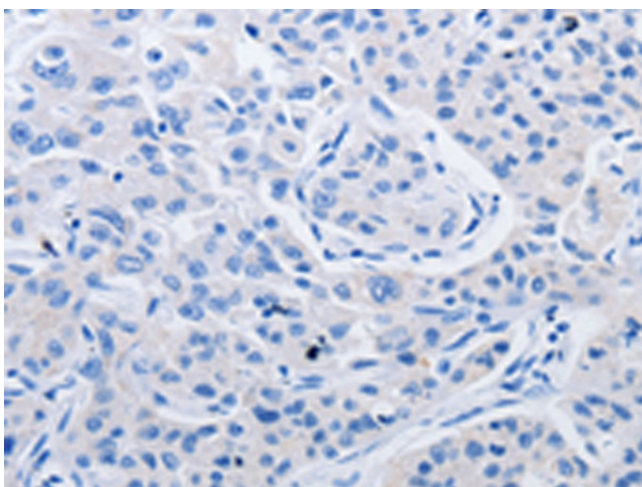
Cell cycle, Neurotrophin signaling pathway, Oocyte meiosis

**Product images:**

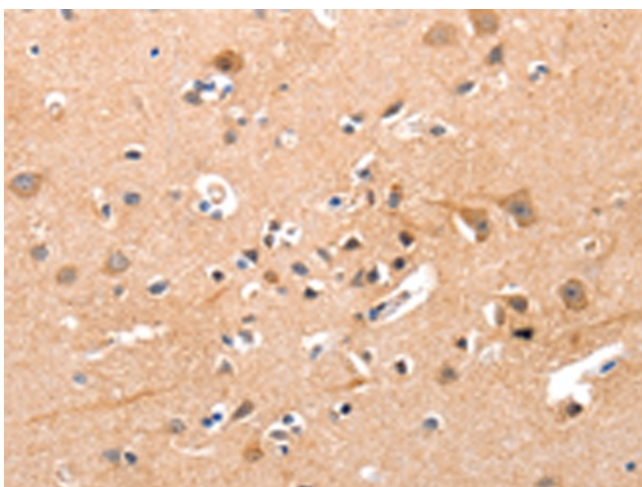
Gel: 10%SDS-PAGE  
Lysate: 40 µg  
Lane 1-2: 293T cells  
Jurkat cells  
Primary antibody: [TA322404] (YWHAG Antibody)  
at dilution 1/800  
Secondary antibody: Goat anti rabbit IgG at  
1/8000 dilution  
Exposure time: 10 seconds



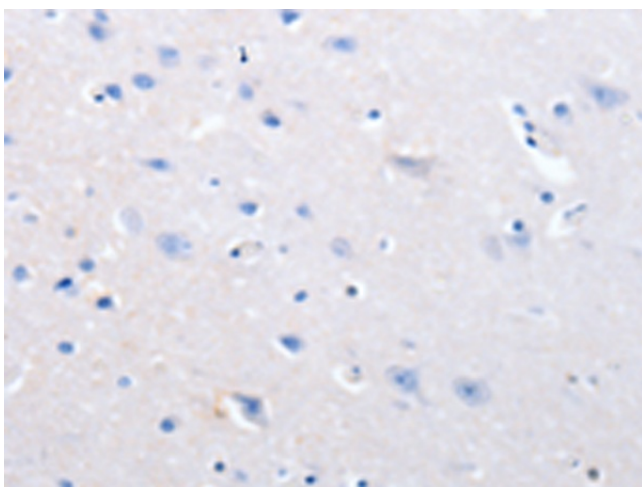
Immunohistochemistry of paraffin-embedded  
Human lung cancer tissue using [TA322404]  
(YWHAG Antibody) at dilution 1/50 (Original  
magnification: ×200)



Immunohistochemistry of paraffin-embedded Human lung cancer tissue using [TA322404] (YWHAG Antibody) at dilution 1/50, treated with synthetic peptide. (Original magnification: ×200)



Immunohistochemistry of paraffin-embedded Human brain tissue using [TA322404] (YWHAG Antibody) at dilution 1/50 (Original magnification: ×200)



Immunohistochemistry of paraffin-embedded Human brain tissue using [TA322404] (YWHAG Antibody) at dilution 1/50, treated with synthetic peptide. (Original magnification: ×200)