

Product datasheet for **TA322404**

14 3 3 gamma (YWHAG) Rabbit Polyclonal Antibody

Product data:

Product Type:	Primary Antibodies
Applications:	IHC, WB
Recommended Dilution:	WB: 1000-5000 WB positive control: 293T and Jurkat cells IHC: 50-200 Positive control: Human lung cancer Predicted cell location: Cytoplasm
Reactivity:	Human, Mouse, Rat
Host:	Rabbit
Isotype:	IgG
Clonality:	Polyclonal
Immunogen:	Synthetic peptide corresponding to a region derived from 141-154 amino acids of Human tyrosine 3-monooxygenase/tryptophan 5-monooxygenase activation protein, gamma polypeptide
Formulation:	PBS pH7.3, 0.05% NaN ₃ , 50% glycerol
Concentration:	lot specific
Purification:	Antigen affinity purification
Conjugation:	Unconjugated
Storage:	Store at -20°C as received.
Stability:	Stable for 12 months from date of receipt.
Predicted Protein Size:	28 kDa
Gene Name:	tyrosine 3-monooxygenase/tryptophan 5-monooxygenase activation protein gamma
Database Link:	NP_036611 Entrez Gene 22628 Mouse Entrez Gene 56010 Rat Entrez Gene 7532 Human P61981



[View online »](#)

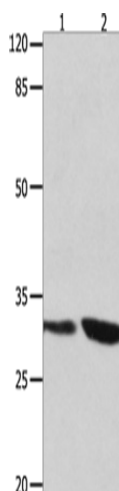
Background: This gene product belongs to the 14-3-3 family of proteins which mediate signal transduction by binding to phosphoserine-containing proteins. This highly conserved protein family is found in both plants and mammals; and this protein is 100% identical to the rat ortholog. It is induced by growth factors in human vascular smooth muscle cells; and is also highly expressed in skeletal and heart muscles; suggesting an important role for this protein in muscle tissue. It has been shown to interact with RAF1 and protein kinase C; proteins involved in various signal transduction pathways.

Synonyms: 14-3-3GAMMA; PPP1R170

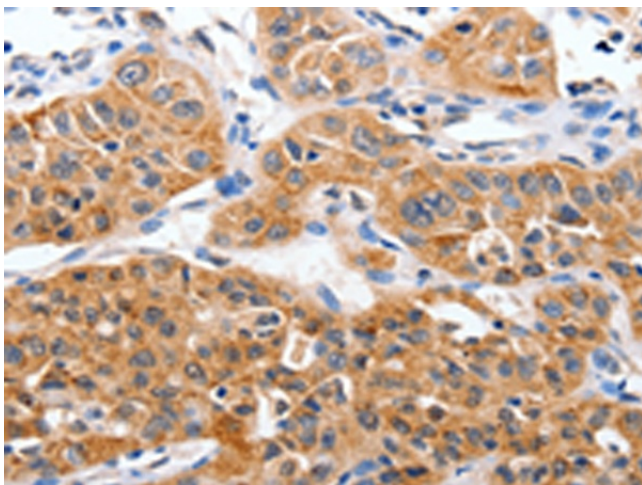
Protein Families: Druggable Genome

Protein Pathways: Cell cycle, Neurotrophin signaling pathway, Oocyte meiosis

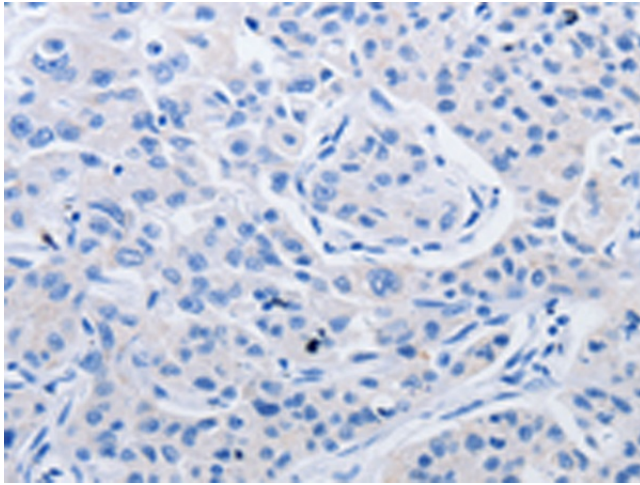
Product images:



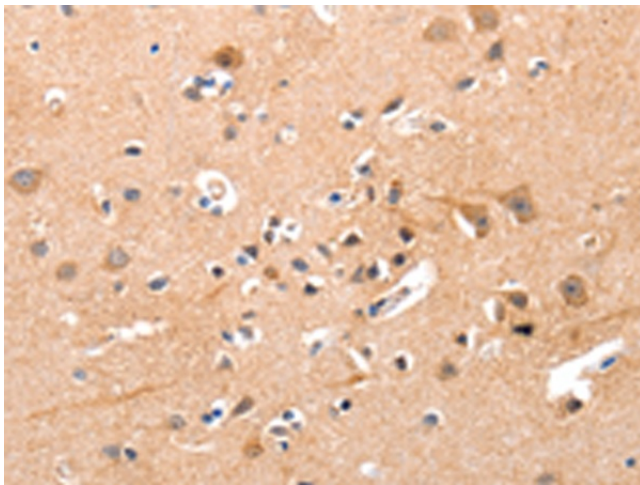
Gel: 10%SDS-PAGE
Lysate: 40 µg
Lane 1-2: 293T cells
Jurkat cells
Primary antibody: TA322404 (YWHAG Antibody)
at dilution 1/800
Secondary antibody: Goat anti rabbit IgG at
1/8000 dilution
Exposure time: 10 seconds



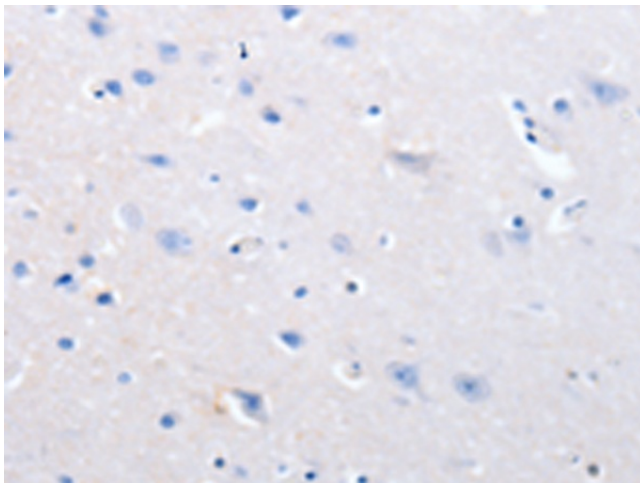
Immunohistochemistry of paraffin-embedded
Human lung cancer tissue using TA322404
(YWHAG Antibody) at dilution 1/50 (Original
magnification: ×200)



Immunohistochemistry of paraffin-embedded Human lung cancer tissue using TA322404 (YWHAG Antibody) at dilution 1/50, treated with synthetic peptide. (Original magnification: ×200)



Immunohistochemistry of paraffin-embedded Human brain tissue using TA322404 (YWHAG Antibody) at dilution 1/50 (Original magnification: ×200)



Immunohistochemistry of paraffin-embedded Human brain tissue using TA322404 (YWHAG Antibody) at dilution 1/50, treated with synthetic peptide. (Original magnification: ×200)