

## Product datasheet for **TA322400S**

### ATG4B Rabbit Polyclonal Antibody

#### Product data:

Product Type:	Primary Antibodies
Applications:	WB
Recommended Dilution:	WB: 500-2000 WB positive control: Hela cells
Reactivity:	Human, Mouse
Host:	Rabbit
Isotype:	IgG
Clonality:	Polyclonal
Immunogen:	Synthetic peptide corresponding to a region derived from 5-20 amino acids of Human Autophagy-related protein 4 homolog B
Formulation:	PBS pH7.3, 0.05% NaN <sub>3</sub> , 50% glycerol
Purification:	Antigen affinity purification
Conjugation:	Unconjugated
Storage:	Store at -20°C as received.
Stability:	Stable for 12 months from date of receipt.
Predicted Protein Size:	43 kDa
Gene Name:	autophagy related 4B cysteine peptidase
Database Link:	<a href="#">NP_037457</a> <a href="#">Entrez Gene 66615 Mouse</a> <a href="#">Entrez Gene 23192 Human</a> <a href="#">Q9Y4P1</a>

**Background:** Autophagy is the process by which endogenous proteins and damaged organelles are destroyed intracellularly. Autophagy is postulated to be essential for cell homeostasis and cell remodeling during differentiation; metamorphosis; non-apoptotic cell death; and aging. Reduced levels of autophagy have been described in some malignant tumors; and a role for autophagy in controlling the unregulated cell growth linked to cancer has been proposed. This gene encodes a member of the autophagin protein family. The encoded protein is also designated as a member of the C-54 family of cysteine proteases. Alternate transcriptional splice variants; encoding different isoforms; have been characterized.



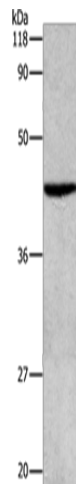
[View online »](#)

Synonyms: APG4B; AURL1

Protein Families: Protease

Protein Pathways: Regulation of autophagy

### Product images:



Gel: 8%SDS-PAGE

Lysate: 40 µg

Lane: HeLa cells

Primary antibody: [TA322400] (ATG4B Antibody)  
at dilution 1/500

Secondary antibody: Goat anti rabbit IgG at  
1/8000 dilution

Exposure time: 2 minutes