

## Product datasheet for **TA322397S**

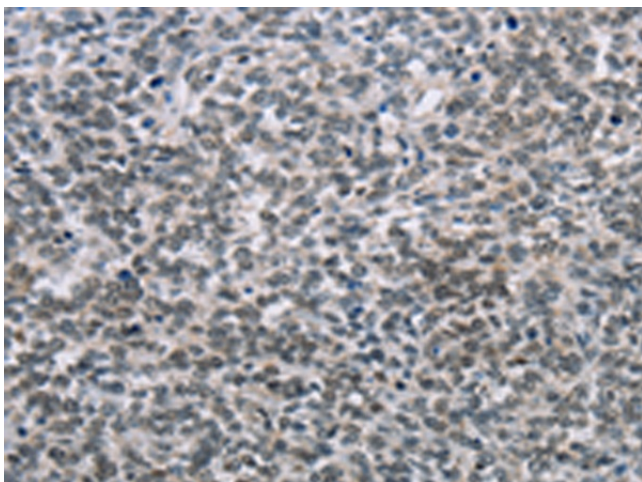
### **NFKBIL2 (TONSL) Rabbit Polyclonal Antibody**

#### **Product data:**

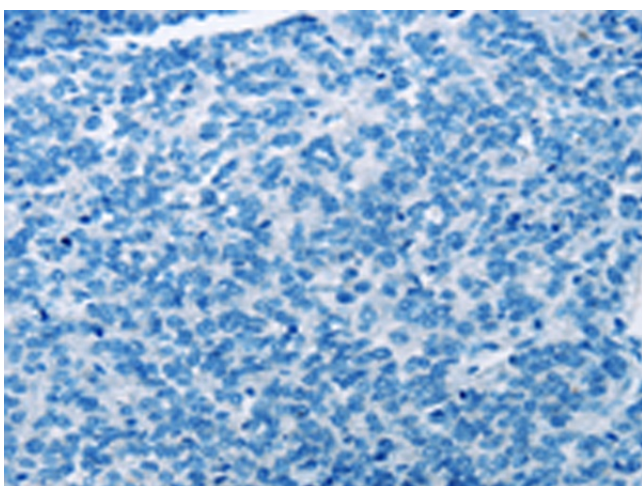
|                              |  |
|------------------------------|--|
| <b>Product Type:</b>         | Primary Antibodies   |
| <b>Applications:</b>         | IHC  |
| <b>Recommended Dilution:</b> | IHC: 100-300<br>Positive control: Human ovarian cancer<br>Predicted cell location: Nucleus   |
| <b>Reactivity:</b>           | Human  |
| <b>Host:</b>                 | Rabbit   |
| <b>Isotype:</b>              | IgG  |
| <b>Clonality:</b>            | Polyclonal   |
| <b>Immunogen:</b>            | Fusion protein corresponding to C terminal 250 amino acids of human tonsoku-like, DNA repair protein   |
| <b>Formulation:</b>          | PBS pH7.3, 0.05% NaN <sub>3</sub> , 50% glycerol   |
| <b>Purification:</b>         | Antigen affinity purification  |
| <b>Conjugation:</b>          | Unconjugated   |
| <b>Storage:</b>              | Store at -20°C as received.  |
| <b>Stability:</b>            | Stable for 12 months from date of receipt.   |
| <b>Gene Name:</b>            | tonsoku-like, DNA repair protein   |
| <b>Database Link:</b>        | <a href="#">NP_038460</a><br><a href="#">Entrez Gene 4796 Human</a><br><a href="#">Q96HA7</a>  |
| <b>Background:</b>           | The protein encoded by this gene is thought to be a negative regulator of NF-kappa-B mediated transcription. The encoded protein may bind NF-kappa-B complexes and trap them in the cytoplasm, preventing them from entering the nucleus and interacting with the DNA. Phosphorylation of this protein targets it for degradation by the ubiquitination pathway, which frees the NF-kappa-B complexes to enter the nucleus.? |
| <b>Synonyms:</b>             | IKBR; NFKBIL2  |
| <b>Protein Families:</b>     | Transcription Factors  |



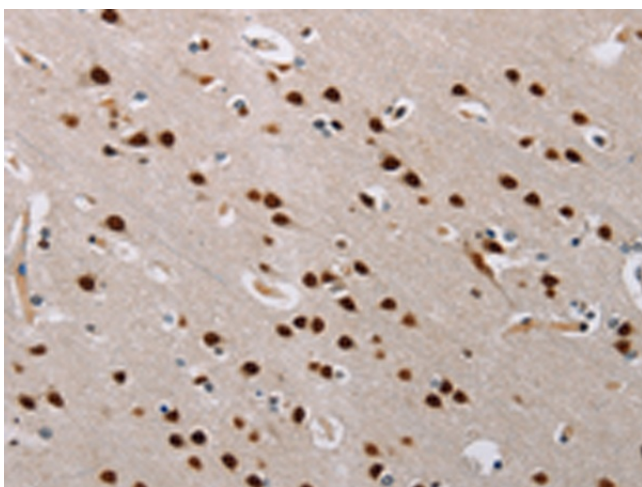
[View online »](#)

**Product images:**

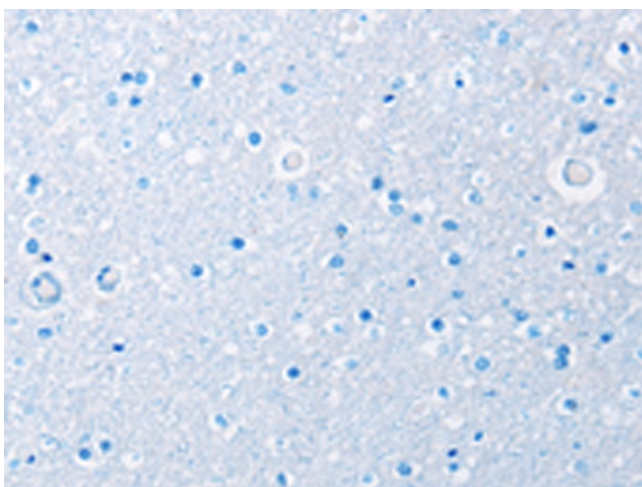
Immunohistochemistry of paraffin-embedded Human ovarian cancer tissue using [TA322397] (TONSL Antibody) at dilution 1/60 (Original magnification:  $\times 200$ )



Immunohistochemistry of paraffin-embedded Human ovarian cancer tissue using [TA322397] (TONSL Antibody) at dilution 1/60, treated with fusion protein. (Original magnification:  $\times 200$ )



Immunohistochemistry of paraffin-embedded Human brain tissue using [TA322397] (TONSL Antibody) at dilution 1/60 (Original magnification: ×200)



Immunohistochemistry of paraffin-embedded Human brain tissue using [TA322397] (TONSL Antibody) at dilution 1/60, treated with fusion protein. (Original magnification: ×200)