

Product datasheet for **TA322395S**

SCN11A Rabbit Polyclonal Antibody

Product data:

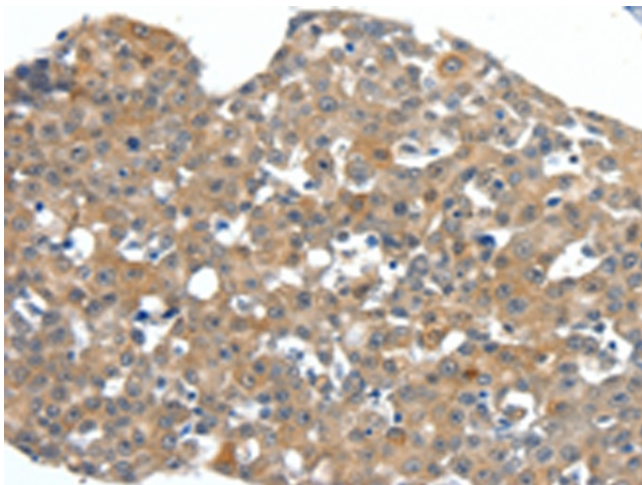
Product Type:	Primary Antibodies
Applications:	IHC
Recommended Dilution:	IHC: 50-200 Positive control: Human esophagus cancer Predicted cell location: Cytoplasm, Cell membrane
Reactivity:	Human, Mouse, Rat
Host:	Rabbit
Isotype:	IgG
Clonality:	Polyclonal
Immunogen:	Synthetic peptide corresponding to a region derived from 29-41 amino acids of human sodium channel, voltage-gated, type XI, alpha subunit
Formulation:	PBS pH7.3, 0.05% NaN ₃ , 50% glycerol
Purification:	Antigen affinity purification
Conjugation:	Unconjugated
Storage:	Store at -20°C as received.
Stability:	Stable for 12 months from date of receipt.
Gene Name:	sodium voltage-gated channel alpha subunit 11
Database Link:	NP_054858 Entrez Gene 24046 Mouse Entrez Gene 29701 Rat Entrez Gene 11280 Human Q9UI33
Background:	Voltage-gated sodium channels are membrane protein complexes that play a fundamental role in the rising phase of the action potential in most excitable cells. Alpha subunits; such as SCN11A; mediate voltage-dependent gating and conductance; while auxiliary beta subunits regulate the kinetic properties of the channel and facilitate membrane localization of the complex. Aberrant expression patterns or mutations of alpha subunits underlie a number of disorders. Each alpha subunit consists of 4 domains connected by 3 intracellular loops; each domain consists of 6 transmembrane segments and intra- and extracellular linkers.
Synonyms:	FEPS3; HSN7; NaN; NAV1.9; PN5; SCN12A; SNS-2



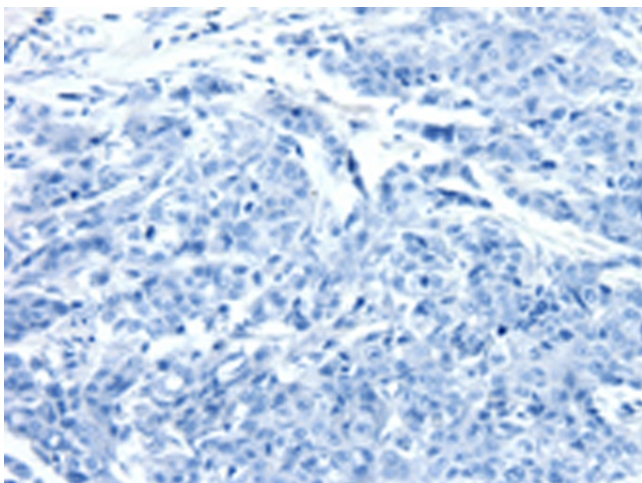
[View online »](#)

Protein Families: Druggable Genome, Ion Channels: Sodium, Transmembrane

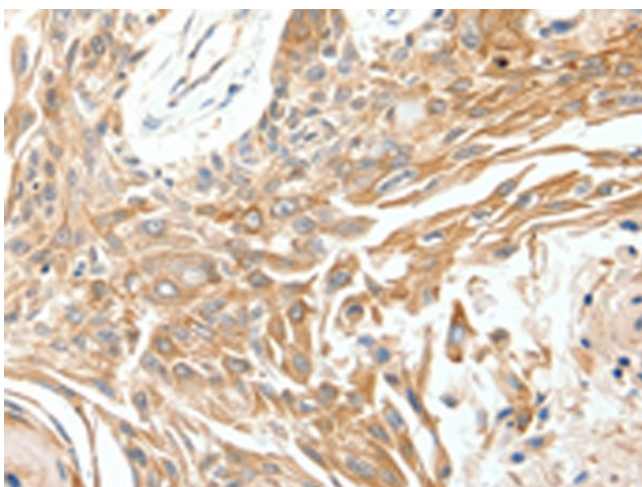
Product images:



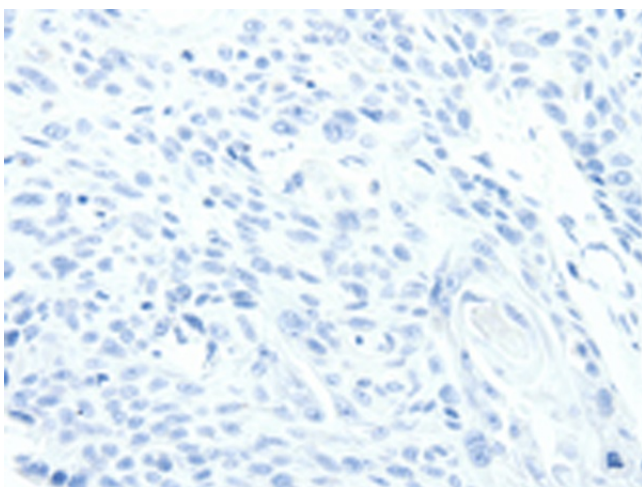
Immunohistochemistry of paraffin-embedded Human esophagus cancer tissue using [TA322395] (SCN11A Antibody) at dilution 1/40 (Original magnification: $\times 200$)



Immunohistochemistry of paraffin-embedded Human esophagus cancer tissue using [TA322395] (SCN11A Antibody) at dilution 1/40, treated with synthetic peptide. (Original magnification: $\times 200$)



Immunohistochemistry of paraffin-embedded Human breast cancer tissue using [TA322395] (SCN11A Antibody) at dilution 1/40 (Original magnification: $\times 200$)



Immunohistochemistry of paraffin-embedded Human breast cancer tissue using [TA322395] (SCN11A Antibody) at dilution 1/40, treated with synthetic peptide. (Original magnification: $\times 200$)