

## Product datasheet for **TA322395**

### SCN11A Rabbit Polyclonal Antibody

#### Product data:

Product Type:	Primary Antibodies
Applications:	IHC
Recommended Dilution:	IHC: 50-200 Positive control: Human esophagus cancer Predicted cell location: Cytoplasm, Cell membrane
Reactivity:	Human, Mouse, Rat
Host:	Rabbit
Isotype:	IgG
Clonality:	Polyclonal
Immunogen:	Synthetic peptide corresponding to a region derived from 29-41 amino acids of human sodium channel, voltage-gated, type XI, alpha subunit
Formulation:	PBS pH7.3, 0.05% NaN <sub>3</sub> , 50% glycerol
Concentration:	lot specific
Purification:	Antigen affinity purification
Conjugation:	Unconjugated
Storage:	Store at -20°C as received.
Stability:	Stable for 12 months from date of receipt.
Gene Name:	sodium voltage-gated channel alpha subunit 11
Database Link:	<a href="#">NP_054858</a> <a href="#">Entrez Gene 24046 MouseEntrez Gene 29701 RatEntrez Gene 11280 Human Q9UI33</a>
Background:	Voltage-gated sodium channels are membrane protein complexes that play a fundamental role in the rising phase of the action potential in most excitable cells. Alpha subunits; such as SCN11A; mediate voltage-dependent gating and conductance; while auxiliary beta subunits regulate the kinetic properties of the channel and facilitate membrane localization of the complex. Aberrant expression patterns or mutations of alpha subunits underlie a number of disorders. Each alpha subunit consists of 4 domains connected by 3 intracellular loops; each domain consists of 6 transmembrane segments and intra- and extracellular linkers.

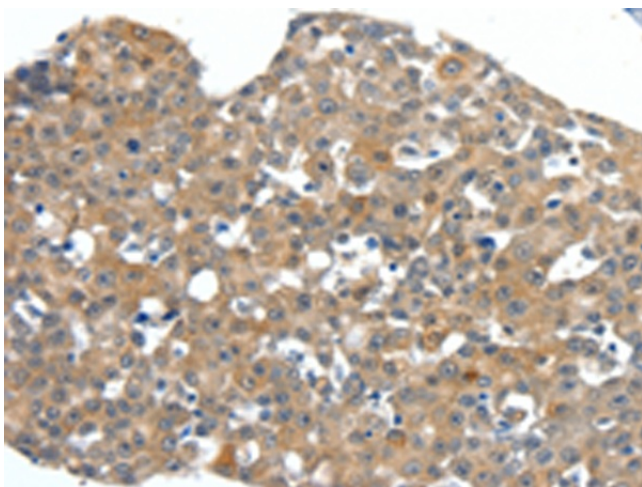


[View online »](#)

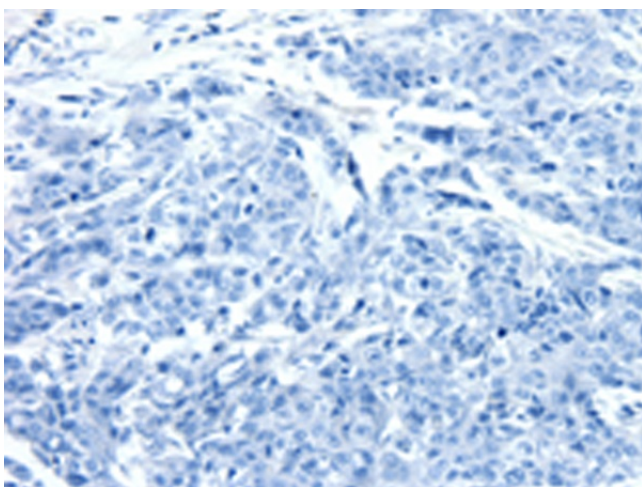
**Synonyms:** FEPS3; HSN7; NaN; NAV1.9; PN5; SCN12A; SNS-2

**Protein Families:** Druggable Genome, Ion Channels: Sodium, Transmembrane

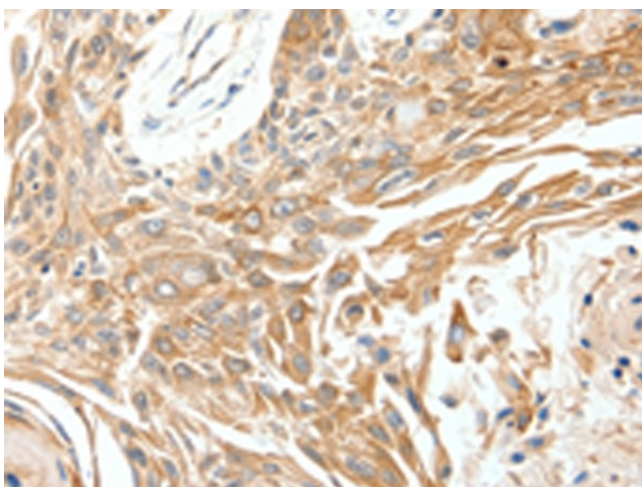
**Product images:**



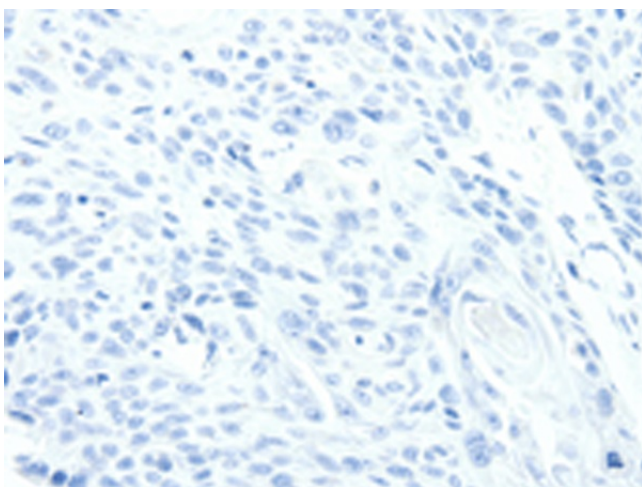
Immunohistochemistry of paraffin-embedded Human esophagus cancer tissue using TA322395 (SCN11A Antibody) at dilution 1/40 (Original magnification:  $\times 200$ )



Immunohistochemistry of paraffin-embedded Human esophagus cancer tissue using TA322395 (SCN11A Antibody) at dilution 1/40, treated with synthetic peptide. (Original magnification:  $\times 200$ )



Immunohistochemistry of paraffin-embedded Human breast cancer tissue using TA322395 (SCN11A Antibody) at dilution 1/40 (Original magnification:  $\times 200$ )



Immunohistochemistry of paraffin-embedded Human breast cancer tissue using TA322395 (SCN11A Antibody) at dilution 1/40, treated with synthetic peptide. (Original magnification:  $\times 200$ )