

## Product datasheet for **TA322393S**

### SCN11A Rabbit Polyclonal Antibody

#### Product data:

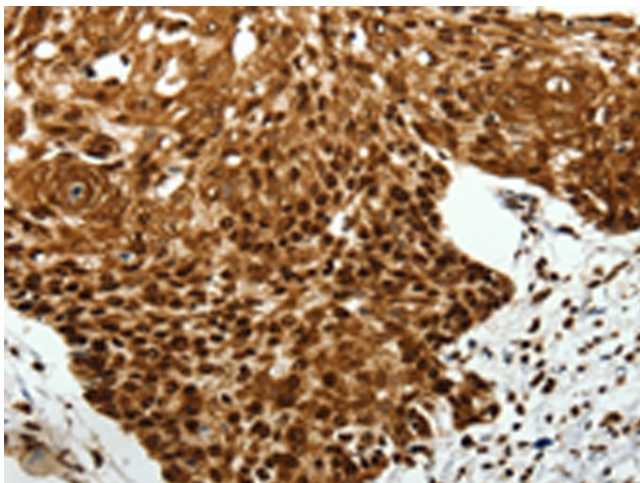
Product Type:	Primary Antibodies
Applications:	IHC
Recommended Dilution:	IHC: 50-200 Positive control: Human cervical cancer Predicted cell location: Cytoplasm, Nucleus
Reactivity:	Human, Rat
Host:	Rabbit
Isotype:	IgG
Clonality:	Polyclonal
Immunogen:	Synthetic peptide corresponding to a region derived from 1503-1520 amino acids of human sodium channel, voltage-gated, type XI, alpha subunit
Formulation:	PBS pH7.3, 0.05% NaN <sub>3</sub> , 50% glycerol
Purification:	Antigen affinity purification
Conjugation:	Unconjugated
Storage:	Store at -20°C as received.
Stability:	Stable for 12 months from date of receipt.
Gene Name:	sodium voltage-gated channel alpha subunit 11
Database Link:	<a href="#">NP_054858</a> <a href="#">Entrez Gene 29701 Rat</a> <a href="#">Entrez Gene 11280 Human</a> <a href="#">Q9UI33</a>
Background:	Voltage-gated sodium channels are membrane protein complexes that play a fundamental role in the rising phase of the action potential in most excitable cells. Alpha subunits; such as SCN11A; mediate voltage-dependent gating and conductance; while auxiliary beta subunits regulate the kinetic properties of the channel and facilitate membrane localization of the complex. Aberrant expression patterns or mutations of alpha subunits underlie a number of disorders. Each alpha subunit consists of 4 domains connected by 3 intracellular loops; each domain consists of 6 transmembrane segments and intra- and extracellular linkers.
Synonyms:	FEPS3; HSN7; NaN; NAV1.9; PN5; SCN12A; SNS-2



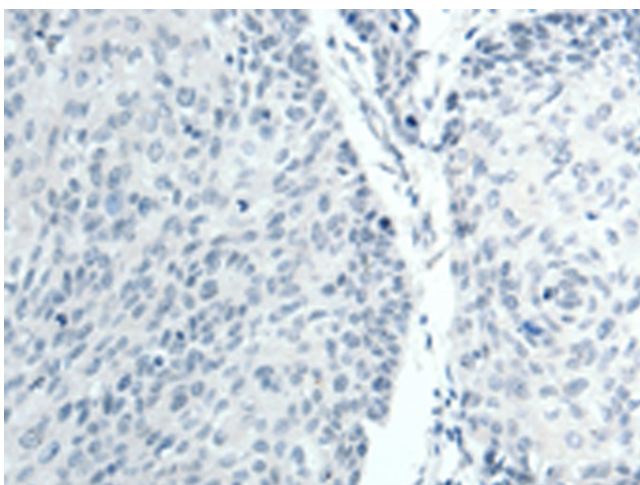
[View online »](#)

Protein Families: Druggable Genome, Ion Channels: Sodium, Transmembrane

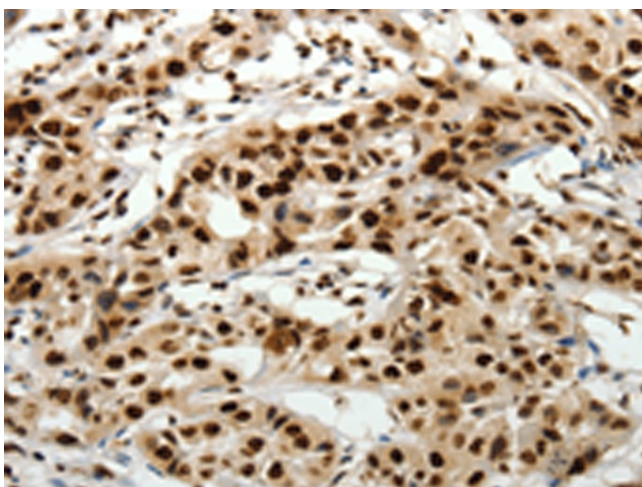
### Product images:



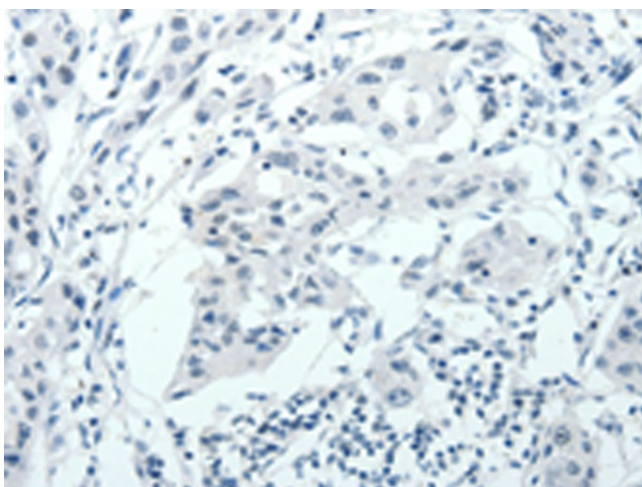
Immunohistochemistry of paraffin-embedded Human cervical cancer tissue using [TA322393] (SCN1A Antibody) at dilution 1/40 (Original magnification:  $\times 200$ )



Immunohistochemistry of paraffin-embedded Human cervical cancer tissue using [TA322393] (SCN1A Antibody) at dilution 1/40, treated with synthetic peptide. (Original magnification:  $\times 200$ )



Immunohistochemistry of paraffin-embedded Human lung cancer tissue using [TA322393] (SCN1A Antibody) at dilution 1/40 (Original magnification:  $\times 200$ )



Immunohistochemistry of paraffin-embedded Human lung cancer tissue using [TA322393] (SCN1A Antibody) at dilution 1/40, treated with synthetic peptide. (Original magnification:  $\times 200$ )